

**MATERIAL**  
 HOUSING: LCP THERMOPLASTIC 94V-0 (BLACK)  
 CONTACTS: COPPER ALLOY  
 HOLD: LCP THERMOPLASTIC 94V-0 (BLACK)

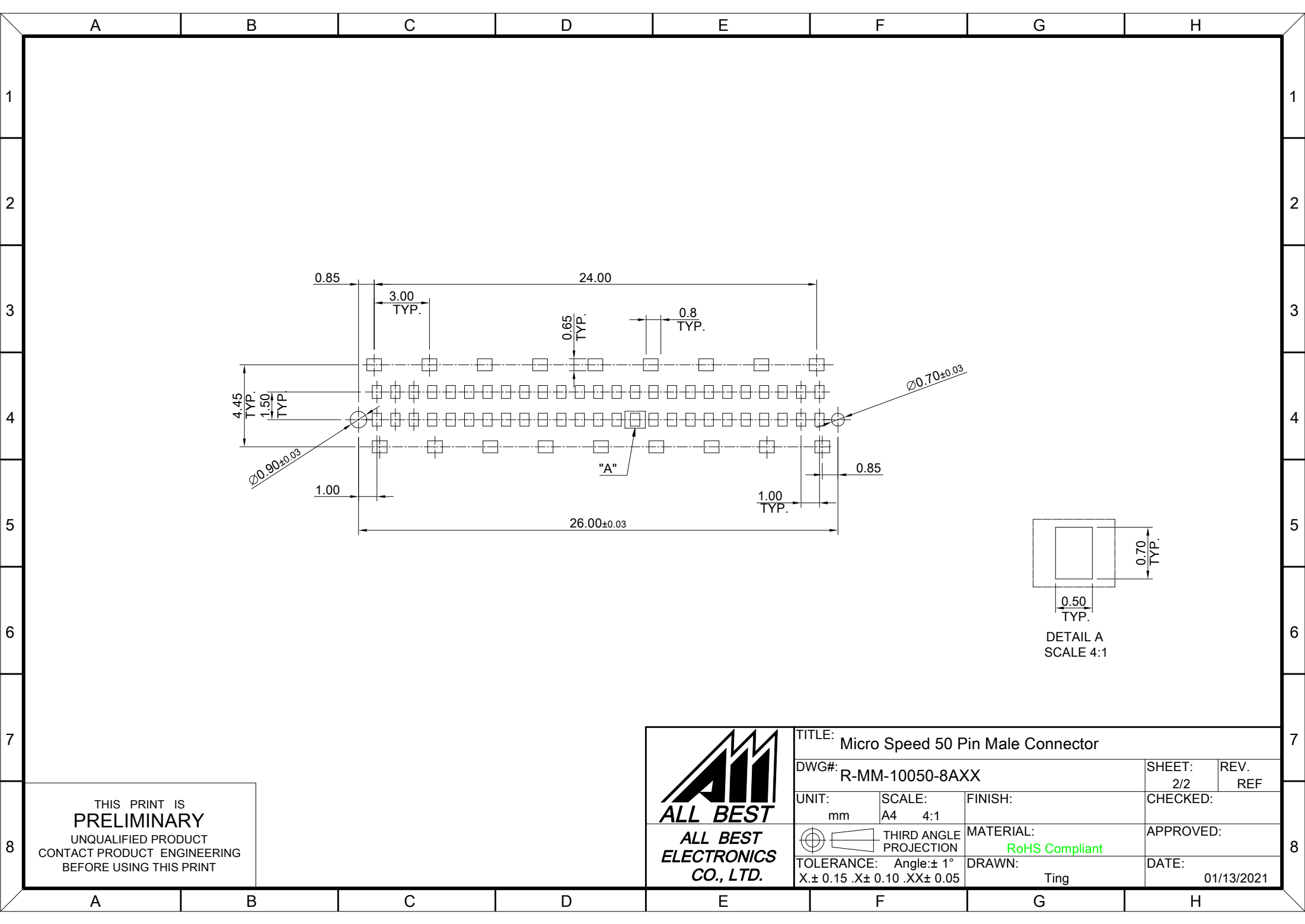
**FINISH**  
 CONTACTS: GOLD ON MATING END  
 TIN ON TERMINATION END;  
 ALL UNDERPLATED NICKEL

**ELECTRICAL CHARACTERISTICS**  
 CONTACT CURRENT RATING: 1A SIGNAL CONTACTS /  
 10A PER SHIELD  
 MAX CYCLES: 500

**ENVIRONMENT**  
 OPERATION TEMPERATURE: -55° C TO 125° C  
 SMT TEMPERATURE: 260°C

THIS PRINT IS  
**PRELIMINARY**  
 UNQUALIFIED PRODUCT  
 CONTACT PRODUCT ENGINEERING  
 BEFORE USING THIS PRINT

	TITLE: Micro Speed 50 Pin Male Connector		
	DWG#: R-MM-10050-8AXX		SHEET: 1/2
	UNIT: mm		REV. REF
	SCALE: A4 2:1	FINISH:	CHECKED:
THIRD ANGLE PROJECTION		MATERIAL: RoHS Compliant	APPROVED:
TOLERANCE: Angle: ± 1° X: ± 0.25 .X: ± 0.20 .XX: ± 0.15		DRAWN: Ting	DATE: 01/13/2021



THIS PRINT IS  
**PRELIMINARY**  
 UNQUALIFIED PRODUCT  
 CONTACT PRODUCT ENGINEERING  
 BEFORE USING THIS PRINT



TITLE: Micro Speed 50 Pin Male Connector			
DWG#: R-MM-10050-8AXX		SHEET: 2/2	REV. REF
UNIT: mm	SCALE: A4 4:1	CHECKED:	
THIRD ANGLE PROJECTION		MATERIAL: RoHS Compliant	APPROVED:
TOLERANCE: Angle: ± 1° X: ± 0.15 .X: ± 0.10 .XX: ± 0.05		DRAWN: Ting	DATE: 01/13/2021

