

MATERIAL
 HOUSING: LCP THERMOPLASTIC 94V-0 (BLACK)
 CONTACTS: COPPER ALLOY
 HOLD: LCP THERMOPLASTIC 94V-0 (BLACK)

FINISH
 CONTACTS: GOLD ON MATING END
 TIN ON TERMINATION END;
 ALL UNDERPLATED NICKEL

ELECTRICAL CHARACTERISTICS
 CONTACT CURRENT RATING: 1A SIGNAL CONTACTS /
 10A PER SHIELD

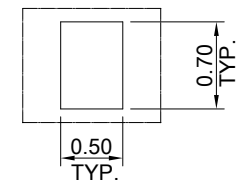
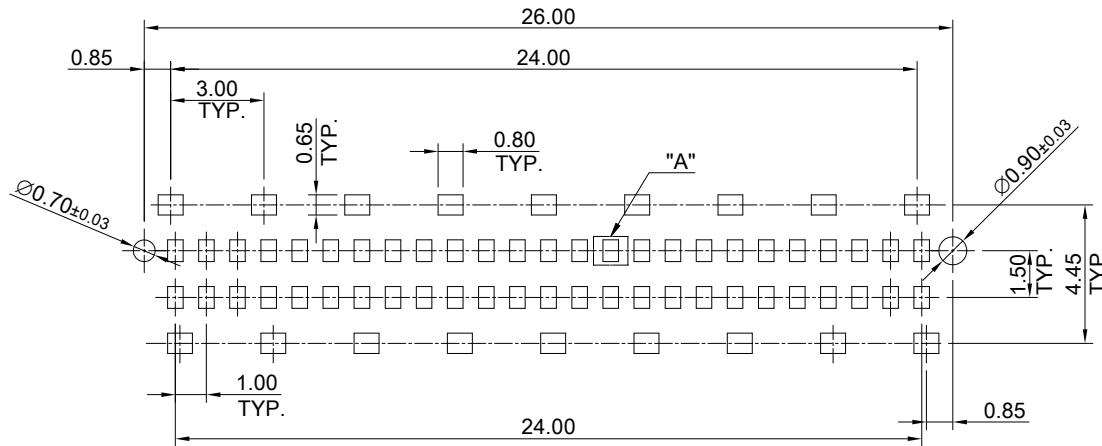
MAX CYCLES: 500

ENVIRONMENT
 OPERATION TEMPERATURE: -55° C TO 125° C
 SMT TEMPERATURE: 260° C

THIS PRINT IS
PRELIMINARY
 UNQUALIFIED PRODUCT
 CONTACT PRODUCT ENGINEERING
 BEFORE USING THIS PRINT



TITLE: Micro Speed 50 Pin Female Connector			
DWG#: R-MF-10050-8AXX		SHEET: 1/2	REV.: REF
UNIT: mm	SCALE: A4 2:1	FINISH:	CHECKED:
THIRD ANGLE PROJECTION		MATERIAL: RoHS Compliant	APPROVED:
TOLERANCE: Angle: ± 1° X: ± 0.25 .X: ± 0.20 .XX: ± 0.15		DRAWN: Ting	DATE: 02/24/2021



DETAIL A
SCALE 4:1

THIS PRINT IS
PRELIMINARY
UNQUALIFIED PRODUCT
CONTACT PRODUCT ENGINEERING
BEFORE USING THIS PRINT



TITLE: Micro Speed 50 Pin Female Connector			
DWG#: R-MF-10050-8AXX		SHEET: 2/2	REV. REF
UNIT: mm	SCALE: A4 4:1	CHECKED:	
THIRD ANGLE PROJECTION TOLERANCE: Angle: $\pm 1^\circ$ $X \pm 0.15$.X ± 0.10 .XX ± 0.05		MATERIAL: RoHS Compliant	APPROVED:
DRAWN: Ting		DATE: 02/24/2021	