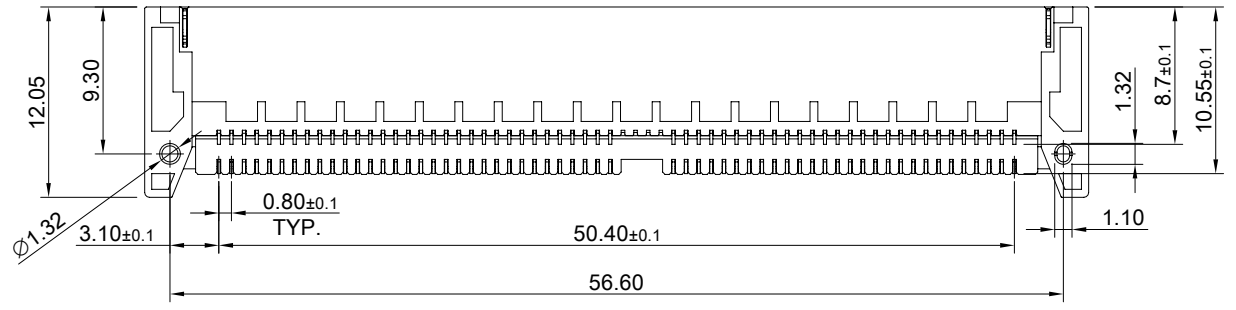
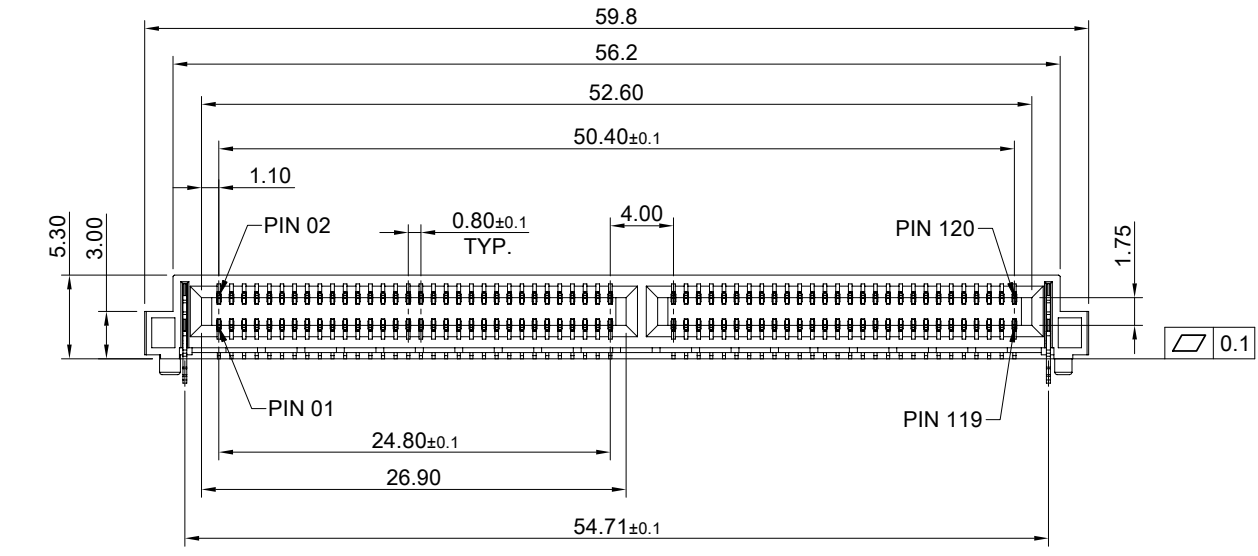



MATERIAL
 CONTACTS: COPPER ALLOY
 INSULATOR: LCP THERMOPLASTIC 94V-0

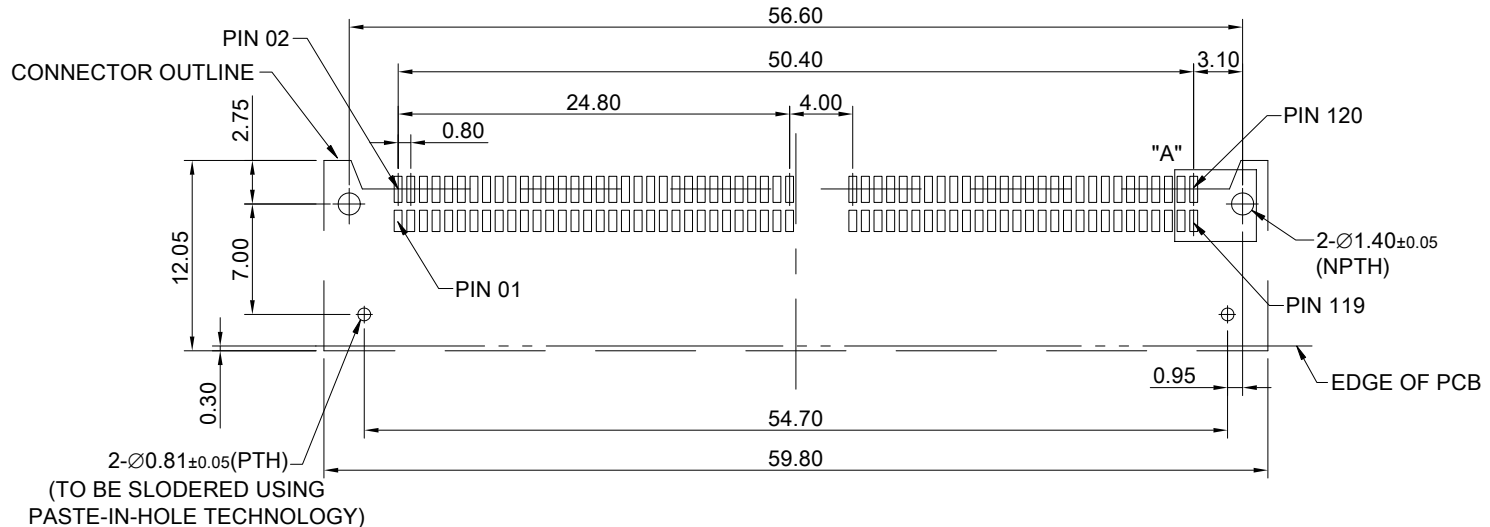
CONTACTS: 5μ" MIN. GOLD ON MATING END;
 100μ" MIN. MATTE TIN ON SOLDER FOOT AREA
 ALL UNDERPLATED NICKEL

ELECTRICAL CHARACTERISTICS
 CONTACT CURRENT RATING: 2.8 AMPERE(2 Pins)
 VOLTAGE RATING: 240VAC
 MAX CYCLES: 100

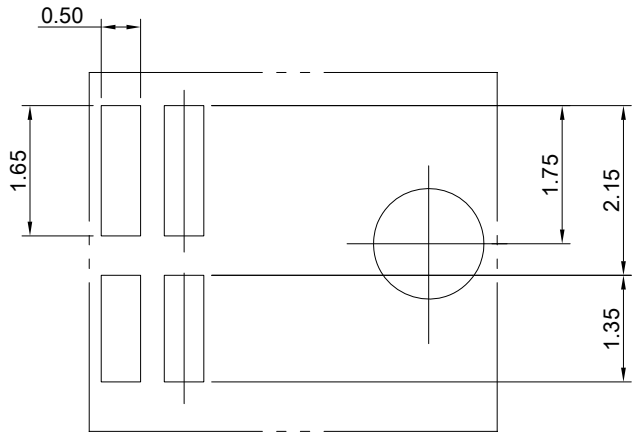
ENVIRONMENT
 OPERATION TEMPERATURE: -55°C TO 125°C
 SMT TEMPERATURE: 260°C





 ALL BEST ELECTRONICS CO., LTD.	TITLE: 0.8mm 120Pin High Speed Assembly		SHEET: 1/2	REV. A
	DWG#: R-HF-08120-9AXX		CHECKED: Gary Kang	
	UNIT: mm	SCALE: A4 2:1	FINISH:	APPROVED: George Yang
	TOLERANCE: Angle: ± 1° X ± 0.20 .X ± 0.15 .XX ± 0.10		MATERIAL: RoHS Compliant	DATE: 05/27/2022
THIRD ANGLE PROJECTION		DRAWN: Yilu		



RECOMMENDED PCB LAYOUT
TOLERANCE: ±0.05



DETAIL A
SCALE 5:1

 <p>ALL BEST ELECTRONICS CO., LTD.</p>	TITLE: 0.8mm 120Pin High Speed Assembly		SHEET: 2/2		REV.: A	
	DWG#: R-HF-08120-9AXX		CHECKED: Gary Kang		APPROVED: George Yang	
UNIT: mm	SCALE: A4 2:1	FINISH:		DATE: 05/27/2022		
 THIRD ANGLE PROJECTION	MATERIAL: RoHS Compliant		DRAWN: Yilu			
TOLERANCE: Angle: ± 1° X ± 0.15 .X ± 0.10 .XX ± 0.05		DRAWN: Yilu		DATE: 05/27/2022		