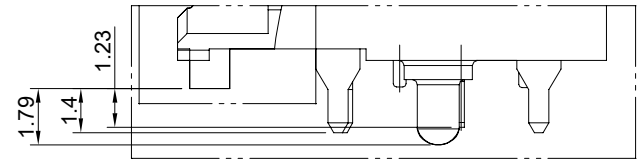
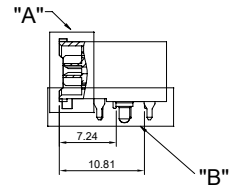
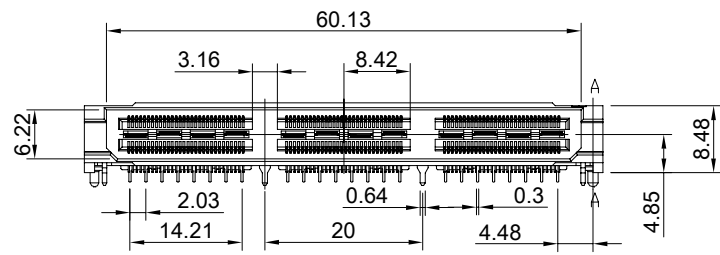
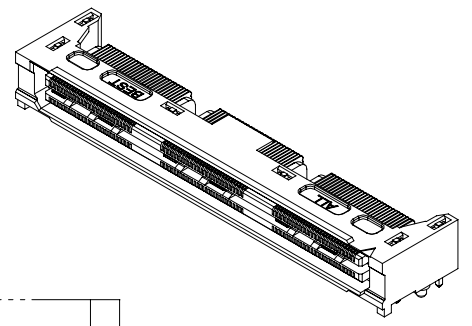


DETAIL A  
SCALE 4:1



DETAIL B  
SCALE 4:1

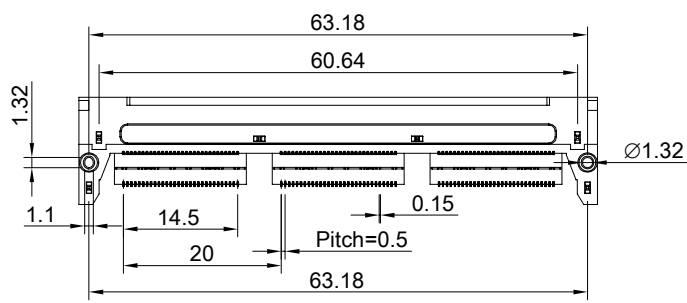


MATERIAL  
CONTACTS: COPPER ALLOY  
INSULATOR: LCP THERMOPLASTIC 94V-0

FINISH  
CONTACTS: 5μ" MIN. GOLD ON MATING END;  
100μ" MIN. MATTE TIN ON SOLDER FOOT AREA  
ALL UNDERPLATED NICKEL  
GROUND PLANE: 5μ" MIN. GOLD ON MATING END;  
100μ" MIN. MATTE TIN ON SOLDER FOOT AREA  
ALL UNDERPLATED NICKEL

ELECTRICAL CHARACTERISTICS  
CONTACT CURRENT RATING: 2 AMPERE  
GROUND PLANE CURRENT RATING: 25 AMPERE  
VOLTAGE RATING: 275VAC  
MAX CYCLES: 100

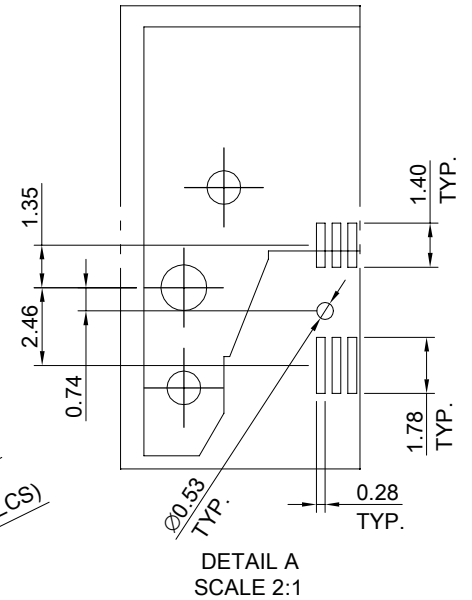
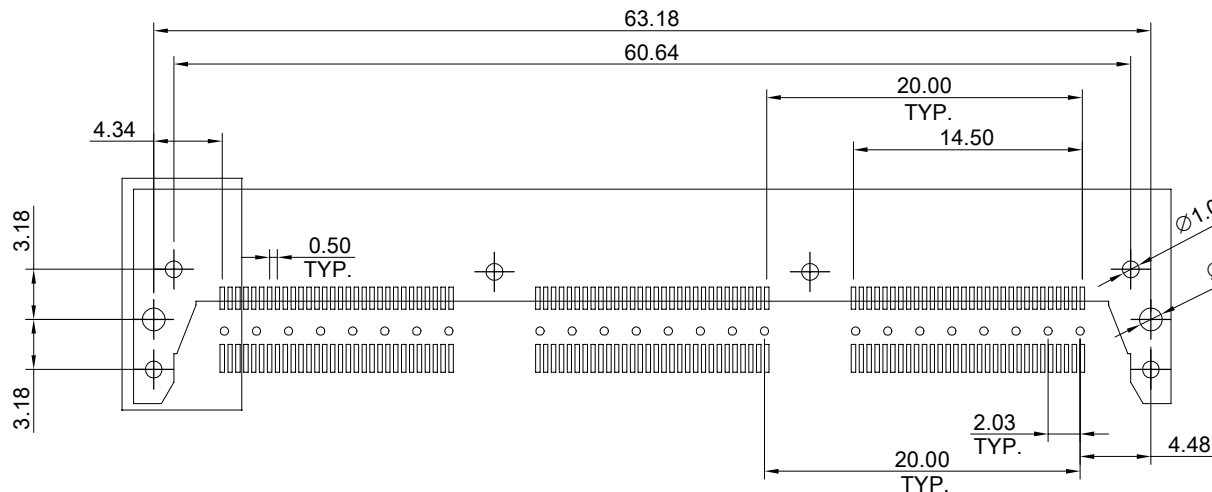
ENVIRONMENT  
OPERATION TEMPERATURE: -55°C TO 125°C  
SMT TEMPERATURE: 260°C



	TITLE: 0.50mm 180Pin Double Row Right Angle Socket Strip(Gen.2)		SHEET: 1/2	REV. REF
	DWG#: R-QF-05180-9AXX		CHECKED:	APPROVED:
	UNIT: mm	SCALE: A4 1:1	MATERIAL: RoHS Compliant	
	TOLERANCE: Angle:± 1° X.± 0.25 .X± 0.20 .XX± 0.15		DRAWN: Tony	DATE: 02/10/2022



THIRD ANGLE PROJECTION



RECOMMENDED PCB LAYOUT  
TOLERANCE: ±0.05

	TITLE: 0.50mm 180Pin Double Row Right Angle Socket Strip(Gen.2)		SHEET: 2/2		REV. REF	
	DWG#: R-QF-05180-9AXX			CHECKED:		APPROVED:
	UNIT: mm	SCALE: A4 2:1	FINISH:		DATE: 02/10/2022	
	THIRD ANGLE PROJECTION TOLERANCE: Angle:± 1° X:± 0.15 .X± 0.1 .XX± 0.05		MATERIAL: RoHS Compliant		DRAWN: Tony	