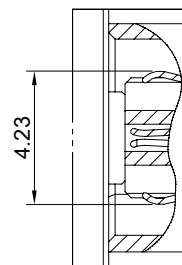
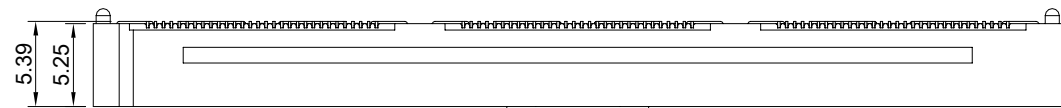
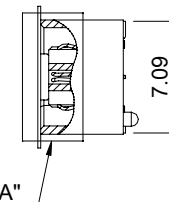
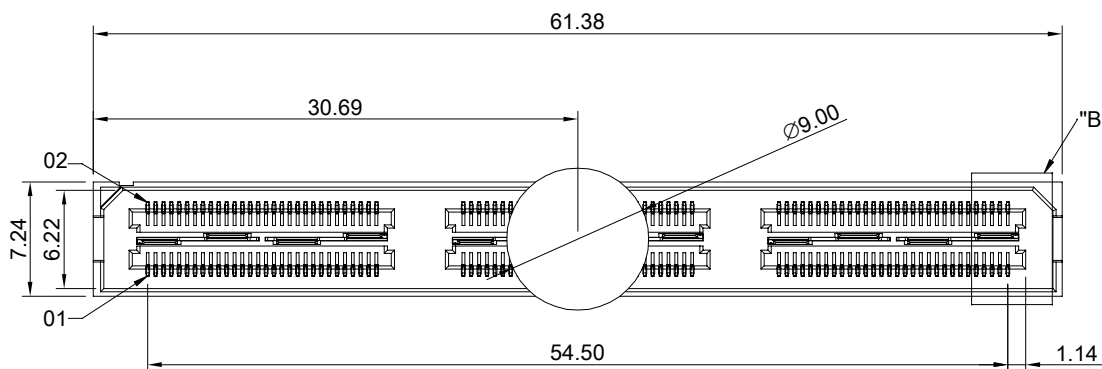
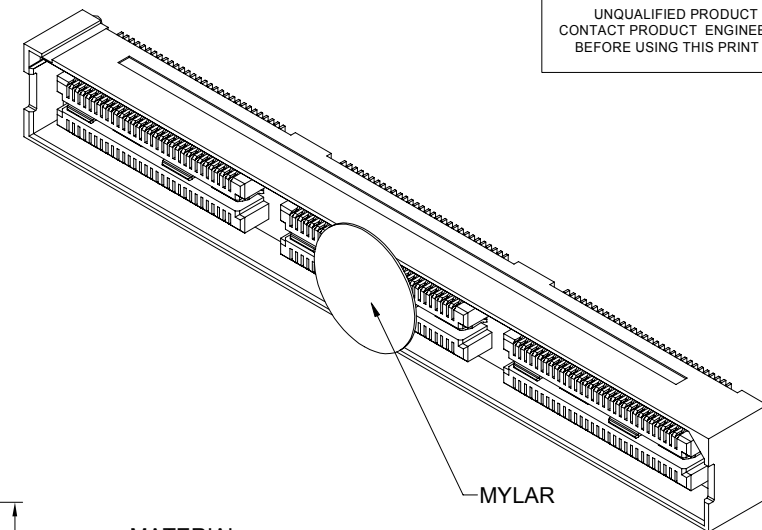


THIS PRINT IS  
**PRELIMINARY**  
UNQUALIFIED PRODUCT  
CONTACT PRODUCT ENGINEERING  
BEFORE USING THIS PRINT



DETAIL A  
SCALE 2:1



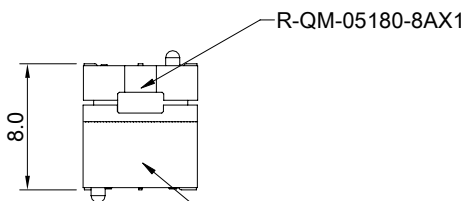
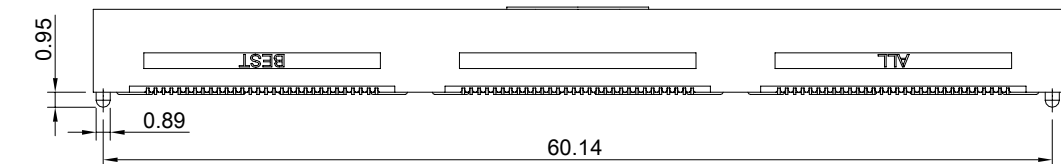
DETAIL B  
SCALE 2:1

**MATERIAL**  
CONTACTS: COPPER ALLOY  
INSULATOR: LCP THERMOPLASTIC 94V-0


**FINISH**  
CONTACTS: 5µ" MIN. GOLD ON MATING END;  
100µ" MIN. MATTE TIN ON SOLDER FOOT AREA  
ALL UNDERPLATED NICKEL  
GROUND PLANE: 5µ" MIN. GOLD ON MATING END;  
100µ" MIN. MATTE TIN ON SOLDER FOOT AREA  
ALL UNDERPLATED NICKEL

**ELECTRICAL CHARACTERISTICS**  
CONTACT CURRENT RATING: 2 AMPERE  
GROUND PLANE CURRENT RATING: 25 AMPERE  
VOLTAGE RATING: 175VAC  
MAX CYCLES: 100

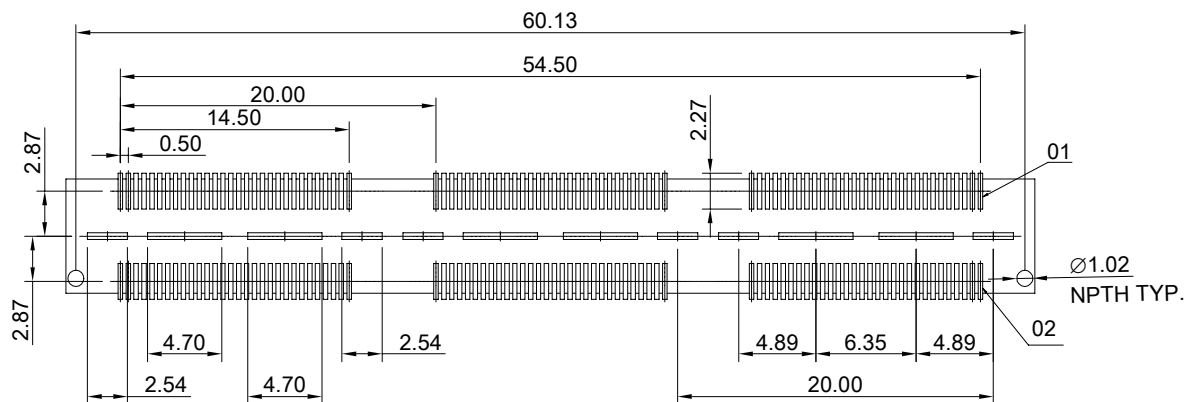
**ENVIRONMENT**  
OPERATION TEMPERATURE: -55°C TO 125°C  
SMT TEMPERATURE: 260°C




The combined height of the male and female connectors after mating.

	TITLE: QSH 0.50mm 180Pin Double Row Socket Strip (Gen.2)		SHEET: 1/2	REV. REF
	DWG#: R-QF-05180-8AX1		CHECKED:	APPROVED:
UNIT: mm	SCALE: A4 2:1	FINISH:	DRAWN: Tony	
TOLERANCE: Angle: ± 1° X ± 0.25 .X ± 0.20 .XX ± 0.15		MATERIAL: RoHS Compliant	DATE: 03/29/2024	

THIS PRINT IS  
**PRELIMINARY**  
 UNQUALIFIED PRODUCT  
 CONTACT PRODUCT ENGINEERING  
 BEFORE USING THIS PRINT



RECOMMENDED PCB LAYOUT  
 TOLERANCE:  $\pm 0.05$

 <b>ALL BEST</b> <b>ELECTRONICS</b> <b>CO., LTD.</b>	<b>TITLE:</b> QSH 0.50mm 180Pin Double Row Socket Strip (Gen.2)		<b>SHEET:</b> 2/2	<b>REV.</b> REF
	<b>DWG#:</b> R-QF-05180-8AX1		<b>CHECKED:</b>	
<b>UNIT:</b> mm	<b>SCALE:</b> A4 2:1	<b>FINISH:</b>	<b>APPROVED:</b>	
<b>TOLERANCE:</b> Angle: $\pm 1^\circ$ $X \pm 0.15$ . $X \pm 0.10$ . $XX \pm 0.05$		<b>MATERIAL:</b> RoHS Compliant	<b>DATE:</b> 03/29/2024	
		<b>DRAWN:</b> Tony		