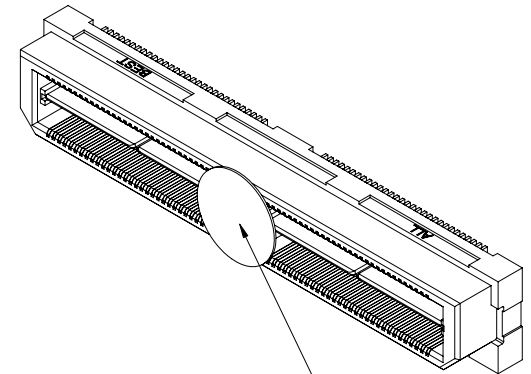
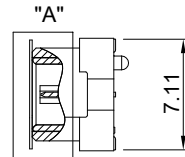
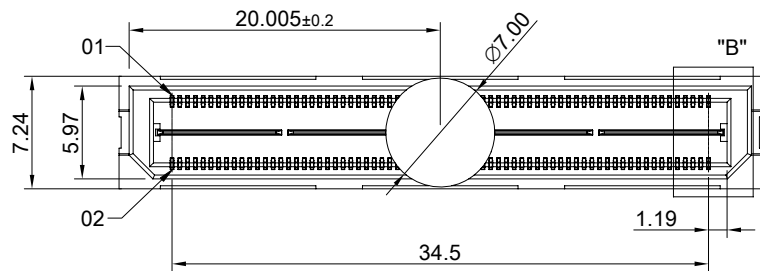


DETAIL A
SCALE 2:1

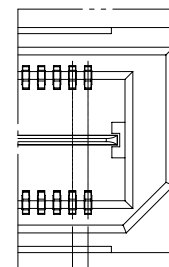
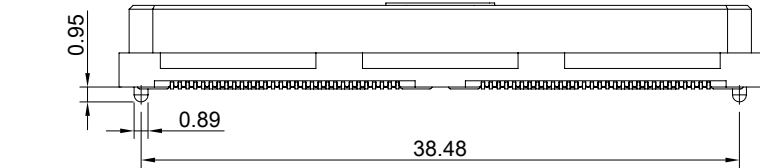


MYLAR



"A"

DETAIL B
SCALE 2:1



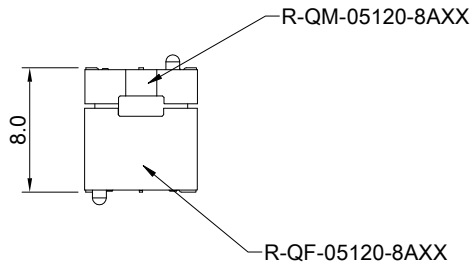
0.5
TYP.

MATERIAL
CONTACTS: COPPER ALLOY
INSULATOR: LCP THERMOPLASTIC 94V-0

FINISH
CONTACTS: 5µ" MIN. GOLD ON MATING END;
100µ" MIN. MATTE TIN ON SOLDER FOOT AREA
ALL UNDERPLATED NICKEL
GROUND PLANE: 5µ" MIN. GOLD ON MATING END;
100µ" MIN. MATTE TIN ON SOLDER FOOT AREA
ALL UNDERPLATED NICKEL

ELECTRICAL CHARACTERISTICS
CONTACT CURRENT RATING: 2 AMPERE
GROUND PLANE CURRENT RATING: 25 AMPERE
VOLTAGE RATING: 175VAC
MAX CYCLES: 100

ENVIRONMENT
OPERATION TEMPERATURE: -55°C TO 125°C
SMT TEMPERATURE: 260°C



The combined height of the male and female connectors after mating.



TITLE: 0.50mm 120Pin Double Row Terminal Assembly (Gen.2)

DWG#: R-QM-05120-8AXX

SHEET: 1/2
REV. A

UNIT: mm
SCALE: A4 2:1

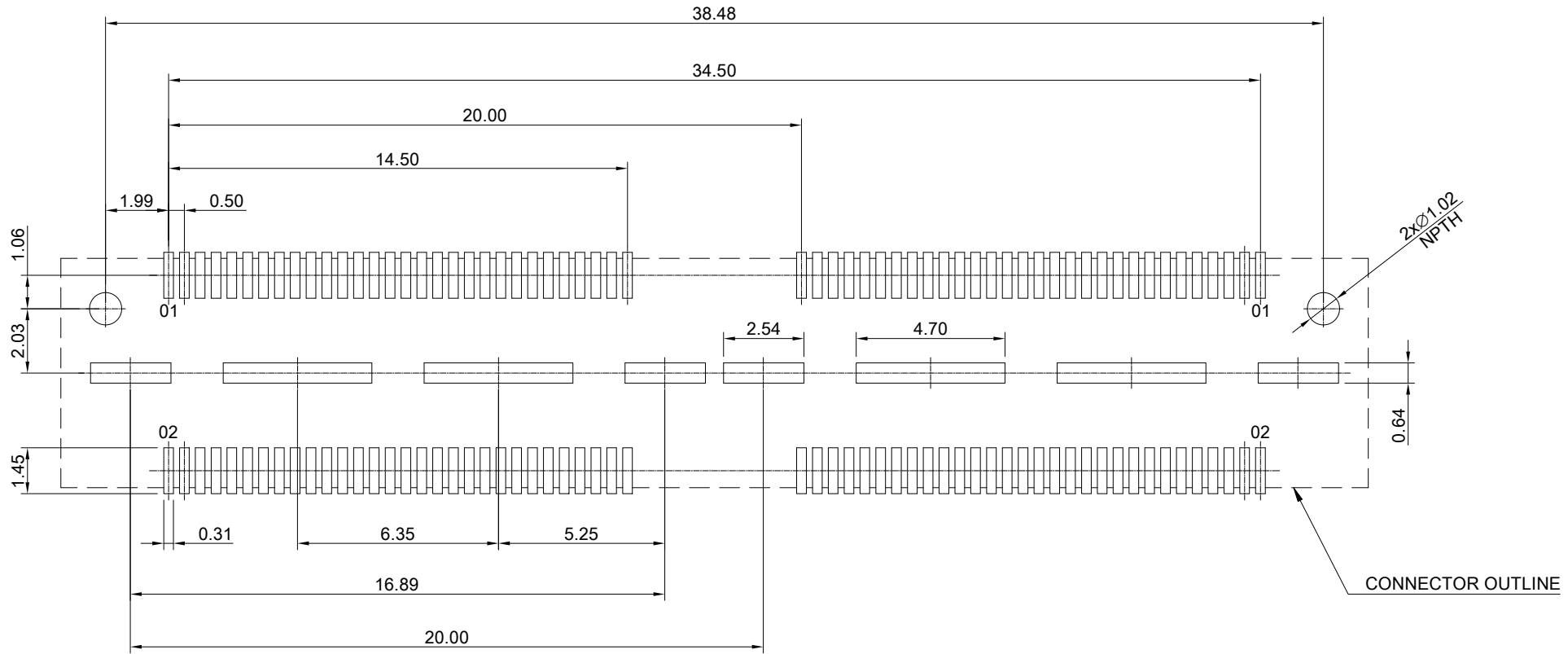
FINISH: CHECKED: Gary Kang

THIRD ANGLE PROJECTION

MATERIAL: RoHS Compliant
APPROVED: George Yang

TOLERANCE: Angle: ± 1°
X: ± 0.25 .X: ± 0.20 .XX: ± 0.15

DRAWN: Tony
DATE: 04/08/2021



RECOMMENDED PCB LAYOUT
TOLERANCE: ±0.05



TITLE: 0.50mm 120Pin Double Row Terminal Assembly (Gen.2)			
DWG#: R-QM-05120-8AXX		SHEET: 2/2	REV. A
UNIT: mm	SCALE: A4 5:1	FINISH:	CHECKED: Gary Kang
THIRD ANGLE PROJECTION		MATERIAL: RoHS Compliant	APPROVED: George Yang
TOLERANCE: X.± 0.15 .X± 0.1 .XX± 0.05		DRAWN: Tony	DATE: 04/08/2021