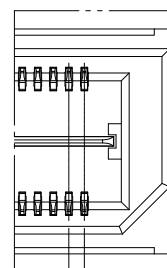


DETAIL A
SCALE 2:1



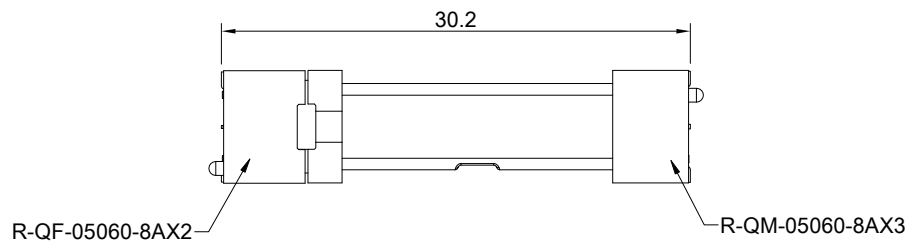
0.5
TYP.
DETAIL B
SCALE 2:1

MATERIAL
CONTACTS: COPPER ALLOY
INSULATOR: LCP THERMOPLASTIC 94V-0

FINISH
CONTACTS: 5μ" MIN. GOLD ON MATING END;
100μ" MIN. MATTE TIN ON SOLDER FOOT AREA
ALL UNDERPLATED NICKEL
GROUND PLANE: 5μ" MIN. GOLD ON MATING END;
100μ" MIN. MATTE TIN ON SOLDER FOOT AREA
ALL UNDERPLATED NICKEL

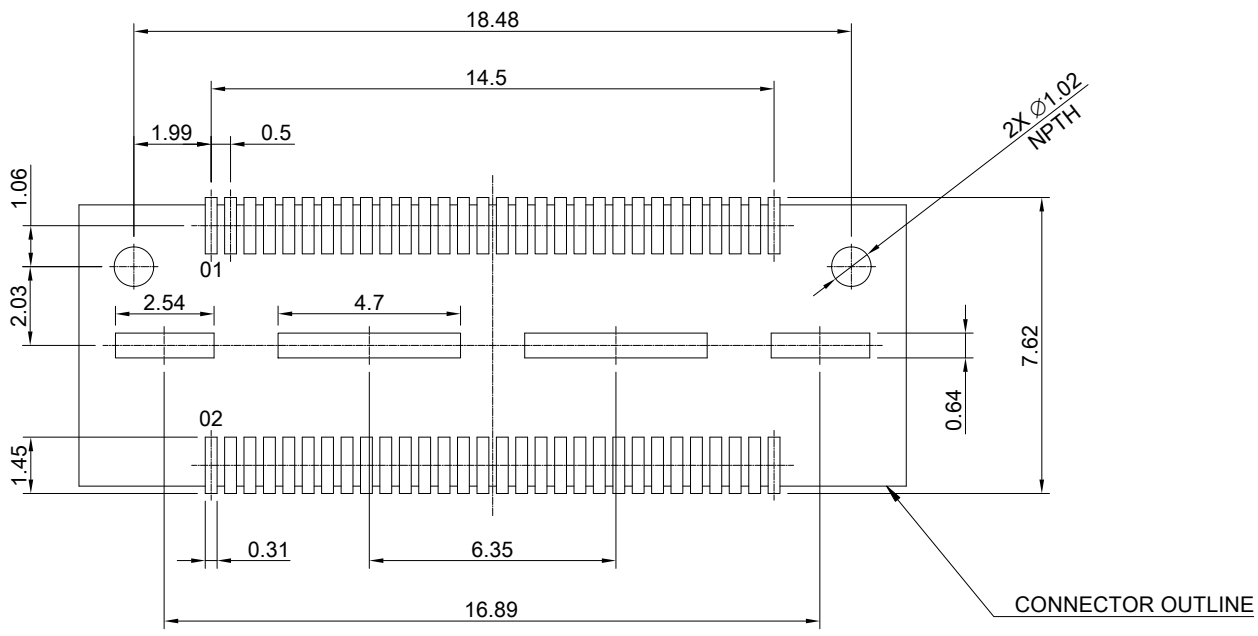
ELECTRICAL CHARACTERISTICS
CONTACT CURRENT RATING: 2 AMPERE
GROUND PLANE CURRENT RATING: 25 AMPERE
VOLTAGE RATING: 175 VAC
MAX CYCLES: 100

ENVIRONMENT
OPERATION TEMPERATURE: -55°C TO 125°C
SMT TEMPERATURE: 260°C


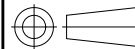


The combined height of the male and female connectors after mating.

<p>ALL BEST ELECTRONICS CO., LTD.</p>	TITLE: 0.50mm 60Pin Double Row Terminal Assembly (Gen.2)		
	DWG#: R-QM-05060-8AX3		SHEET: 1/2 REV. A
	UNIT: mm	SCALE: A4 2:1	CHECKED: Gary Kang
	TOLERANCE: Angle: ± 1° X ± 0.25 .X ± 0.20 .XX ± 0.15		APPROVED: George Yang
THIRD ANGLE PROJECTION		MATERIAL: RoHS Compliant	DATE: 01/18/2021
DRAWN: Tony			



RECOMMENDED PCB LAYOUT
TOLERANCE: ±0.05

 ALL BEST ALL BEST ELECTRONICS CO., LTD.	TITLE: 0.50mm 60Pin Double Row Terminal Assembly (Gen.2)		SHEET: 2/2	REV. A
	DWG#: R-QM-05060-8AX3		CHECKED: Gary Kang	
	UNIT: mm	SCALE: A4 5:1	FINISH: M/T	APPROVED: George Yang
	 THIRD ANGLE PROJECTION TOLERANCE: Angle: ± 1° X.± 0.15 .X± 0.1 .XX± 0.05		MATERIAL: RoHS Compliant	DATE: 01/18/2021
		DRAWN: Tony		