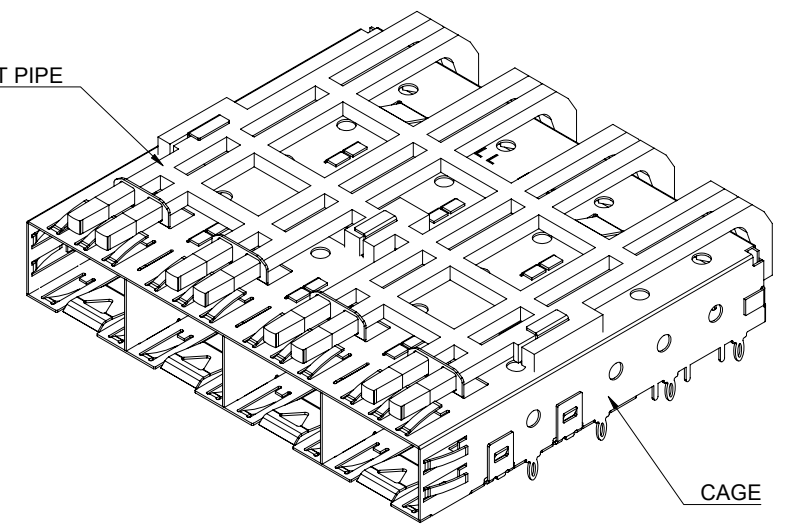
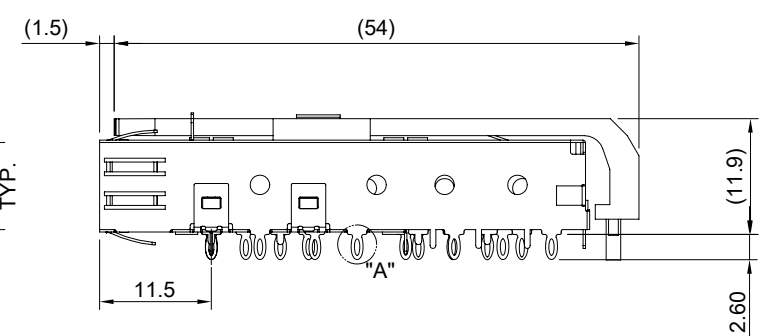
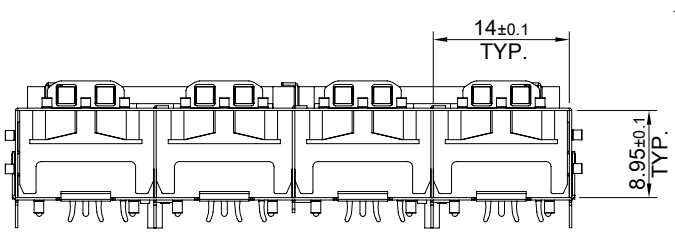


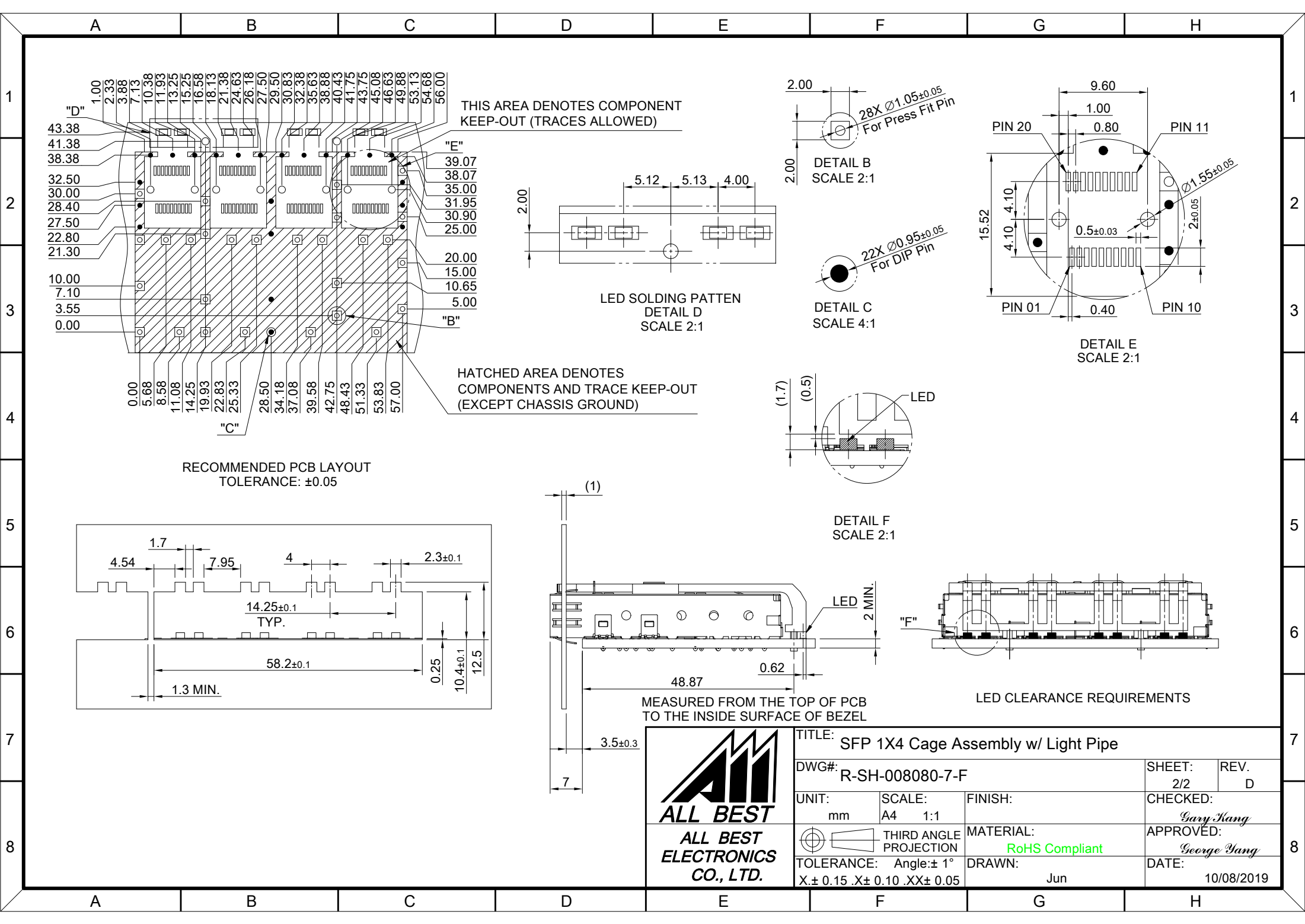
LIGHT PIPE



MATERIAL
CAGE: NICKEL SILVER
LIGHT PIPE: PC



| | | | | | | |
|---|---|---------------|------------------------|--------------------------|--|-----------------------|
| <p>ALL BEST ALL BEST ELECTRONICS CO., LTD.</p> | TITLE: SFP 1X4 Cage Assembly w/ Light Pipe | | | SHEET: 1/2 | | REV. D |
| | DWG#: R-SH-008080-7-F | | | CHECKED: Gary Kang | | APPROVED: George Yang |
| | UNIT: mm | SCALE: A4 5:4 | FINISH: | MATERIAL: RoHS Compliant | | DATE: 10/08/2019 |
| | TOLERANCE: Angle: $\pm 1^\circ$ X: ± 0.25 .X: ± 0.20 .XX: ± 0.15 | | THIRD ANGLE PROJECTION | DRAWN: Jun | | |



THIS AREA DENOTES COMPONENT
KEEP-OUT (TRACES ALLOWED)

HATCHED AREA DENOTES
COMPONENTS AND TRACE KEEP-OUT
(EXCEPT CHASSIS GROUND)

RECOMMENDED PCB LAYOUT
TOLERANCE: ± 0.05

LED SOLDERING PATTEN
DETAIL D
SCALE 2:1

DETAIL C
SCALE 4:1

DETAIL E
SCALE 2:1

DETAIL F
SCALE 2:1

LED CLEARANCE REQUIREMENTS

MEASURED FROM THE TOP OF PCB
TO THE INSIDE SURFACE OF BEZEL



| | | | |
|--|---------------|--------------------------|-----------------------|
| TITLE: SFP 1X4 Cage Assembly w/ Light Pipe | | | |
| DWG#: R-SH-008080-7-F | | SHEET: 2/2 | REV. D |
| UNIT: mm | SCALE: A4 1:1 | FINISH: | CHECKED: Gary Kang |
| THIRD ANGLE PROJECTION | | MATERIAL: RoHS Compliant | APPROVED: George Yang |
| TOLERANCE: Angle: $\pm 1^\circ$ X ± 0.15 .X ± 0.10 .XX ± 0.05 | | DRAWN: Jun | DATE: 10/08/2019 |