

A B C D E F G H

1

1

2

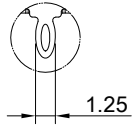
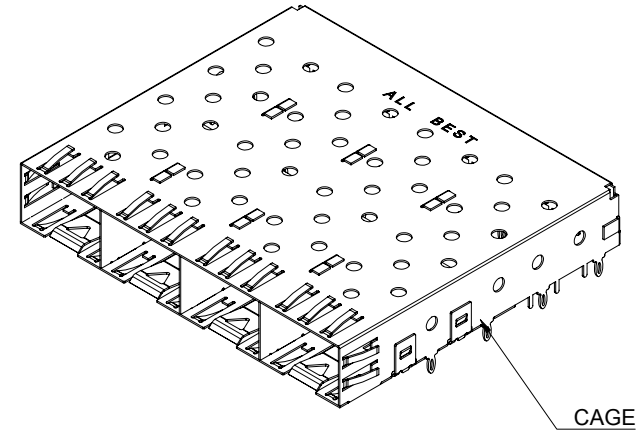
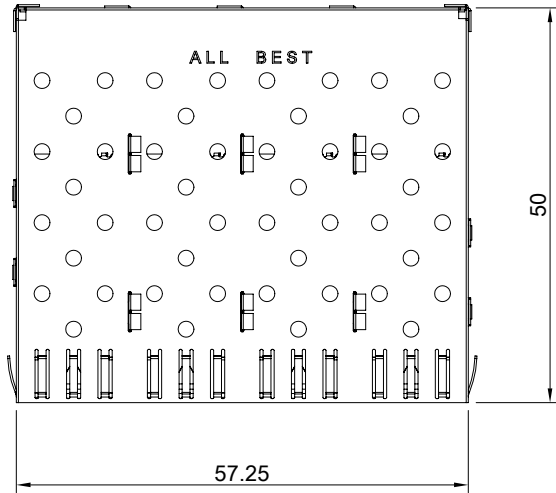
2

3

3

4

4

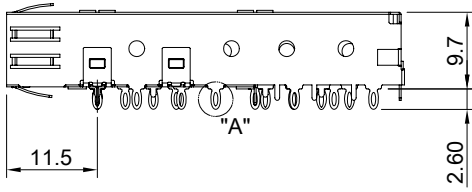
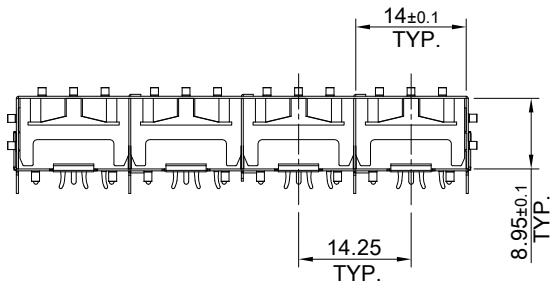


DETAIL A
SCALE 2:1

MATERIAL
CAGE: NICKEL SILVER

5

5



6

6

7

7

8

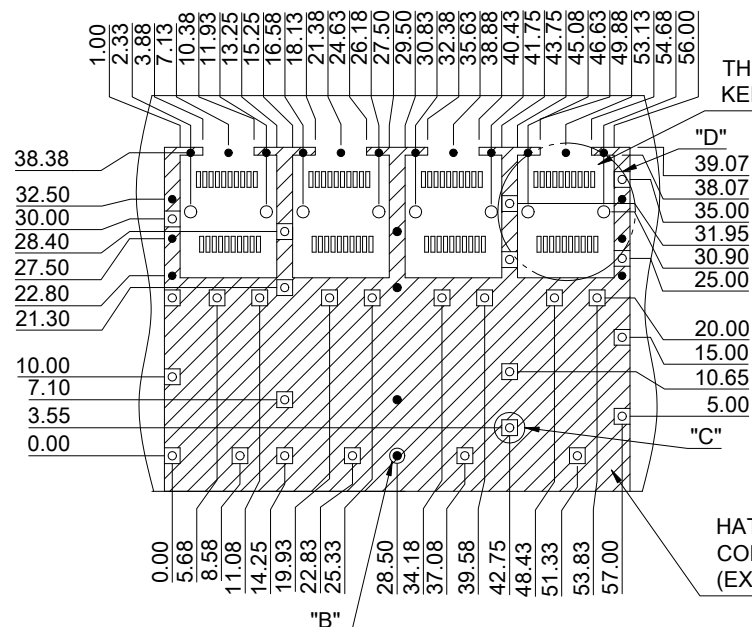
8



TITLE: SFP 1X4 Cage Assembly Press Fit				
DWG#: R-SH-008080-6-F			SHEET: 1/3	REV. B
UNIT: mm	SCALE: A4 1:1	FINISH:	CHECKED: Gary Kang	
TOLERANCE: Angle: ± 1° X ± 0.25 .X ± 0.20 .XX ± 0.15		MATERIAL: RoHS Compliant	APPROVED: George Yang	
DRAWN: Jun			DATE: 09/25/2019	

A B C D E F G H

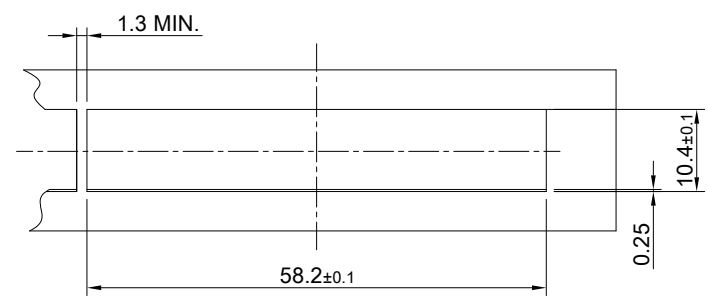
A B C D E F G H



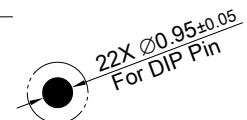
THIS AREA DENOTES COMPONENT KEEP-OUT (TRACES ALLOWED)

HATCHED AREA DENOTES COMPONENTS AND TRACE KEEP-OUT (EXCEPT CHASSIS GROUND)

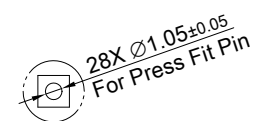
RECOMMENDED PCB LAYOUT TOLERANCE: ± 0.05



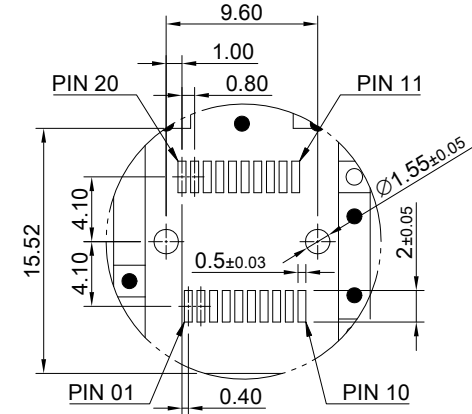
RECOMMENDED BEZEL CUT-OUT



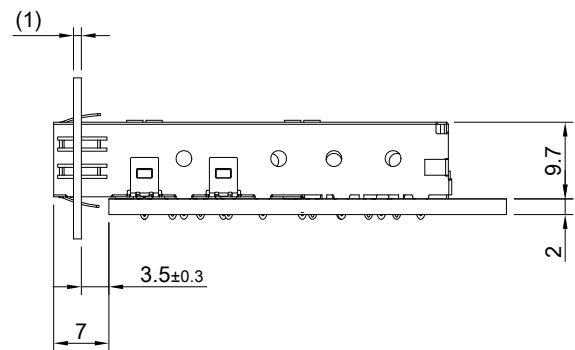
DETAIL B SCALE 4:1



DETAIL C SCALE 2:1



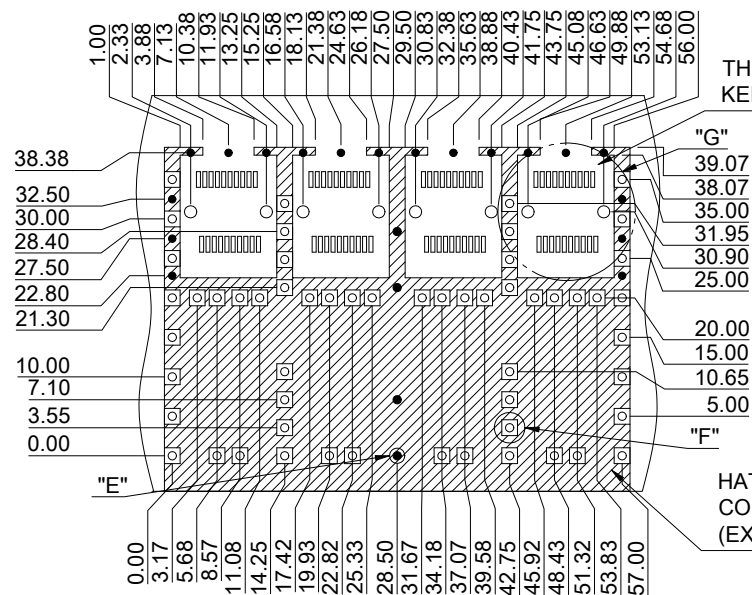
DETAIL D SCALE 2:1



<p>ALL BEST ELECTRONICS CO., LTD.</p>	TITLE: SFP 1X4 Cage Assembly Press Fit		SHEET: 2/3	REV. B
	DWG#: R-SH-008080-6-F		CHECKED: Gary Kang	
	UNIT: mm	SCALE: A4 1:1	FINISH:	APPROVED: George Yang
	TOLERANCE: Angle: $\pm 1^\circ$ X ± 0.15 .X ± 0.10 .XX ± 0.05		MATERIAL: RoHS Compliant	DRAWN: Jun

A B C D E F G H

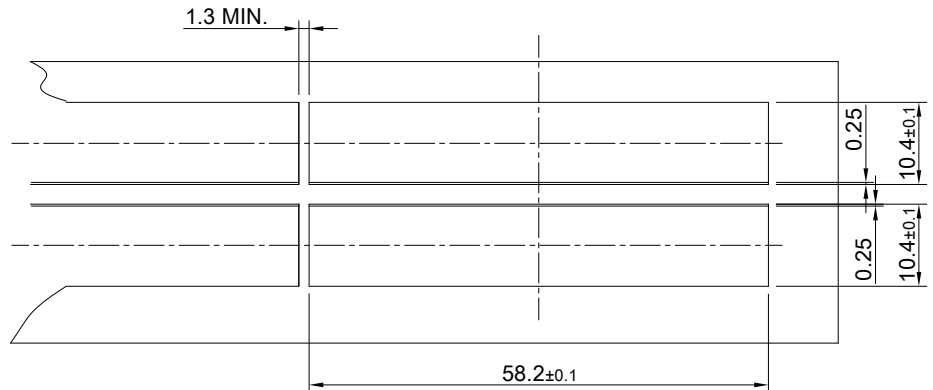
A B C D E F G H



THIS AREA DENOTES COMPONENT KEEP-OUT (TRACES ALLOWED)

HATCHED AREA DENOTES COMPONENTS AND TRACE KEEP-OUT (EXCEPT CHASSIS GROUND)

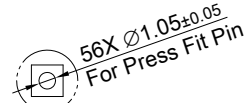
RECOMMENDED PCB LAYOUT FOR BELLY TO BELLY MOUNTING
TOLERANCE: ±0.05



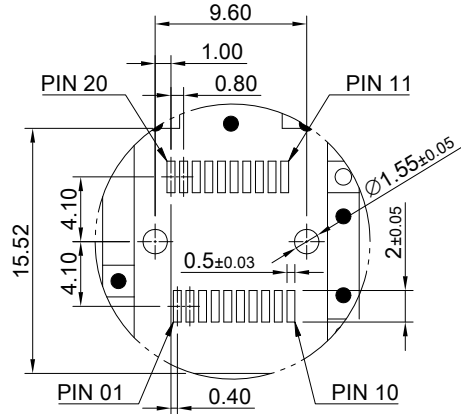
RECOMMENDED BEZEL CUT-OUT FOR BELLY TO BELLY MOUNTING



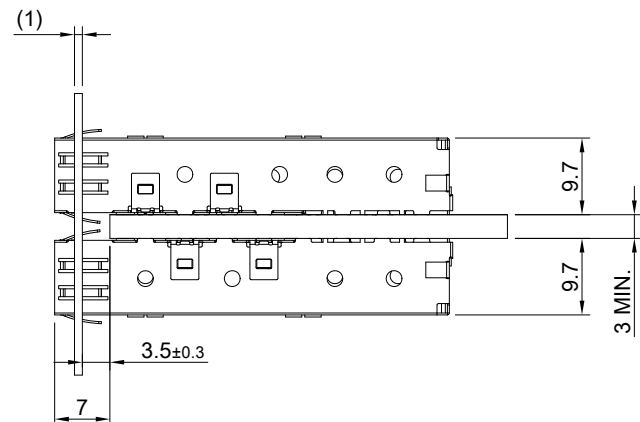
DETAIL E
SCALE 4:1



DETAIL F
SCALE 2:1



DETAIL G
SCALE 2:1



TITLE: SFP 1X4 Cage Assembly Press Fit			
DWG#: R-SH-008080-6-F			SHEET: 3/3
			REV. B
UNIT: mm	SCALE: A4 1:1	FINISH:	
TOLERANCE: Angle: ± 1° X ± 0.15 .X ± 0.10 .XX ± 0.05		MATERIAL: RoHS Compliant	
		CHECKED: Gary Kang	
		APPROVED: George Yang	
		DATE: 09/25/2019	
		DRAWN: Jun	

A B C D E F G H