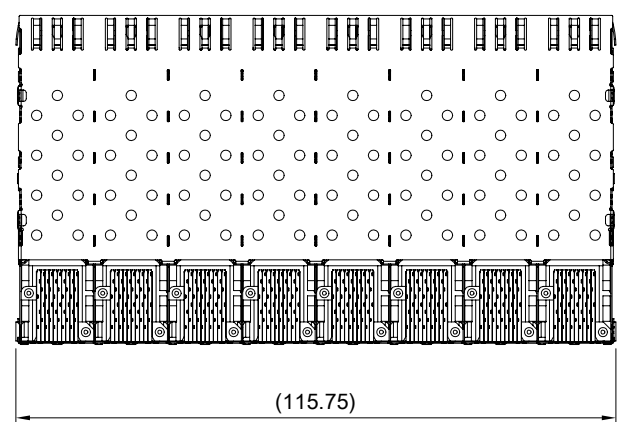
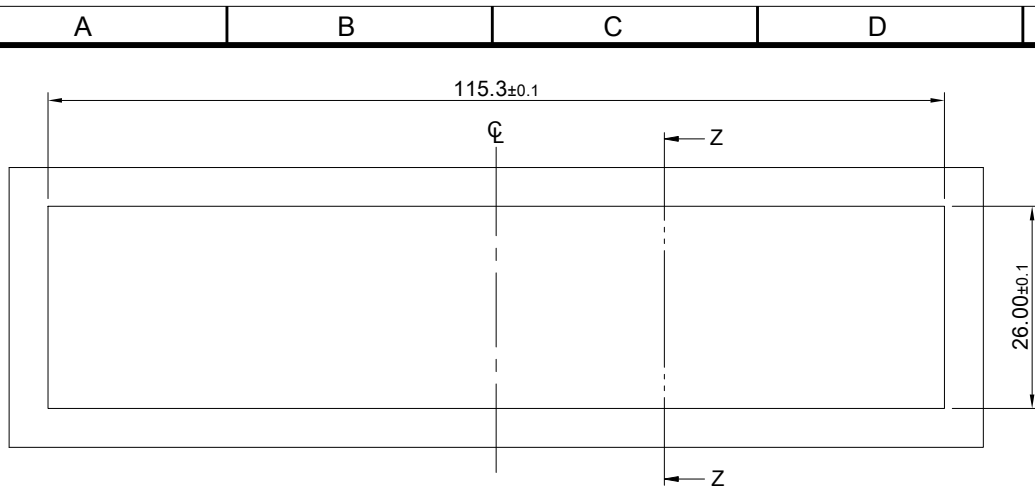


**MATERIAL**  
 CAGE: NICKEL SILVER  
 CONNECTOR: PA9T 94V-0 (BLACK)  
 LCP 94V-0 (DARK GRAY)  
 COPPER ALLOY  
 LIGHT PIPE: PC (CLEAR)  
**FINISH**  
 CONTACT: 15µ" MIN. GOLD ON MATING END;  
 30µ" MIN. MATTE TIN ON TERMINATION END;  
 ALL UNDERPLATED 50µ" MIN. NICKEL

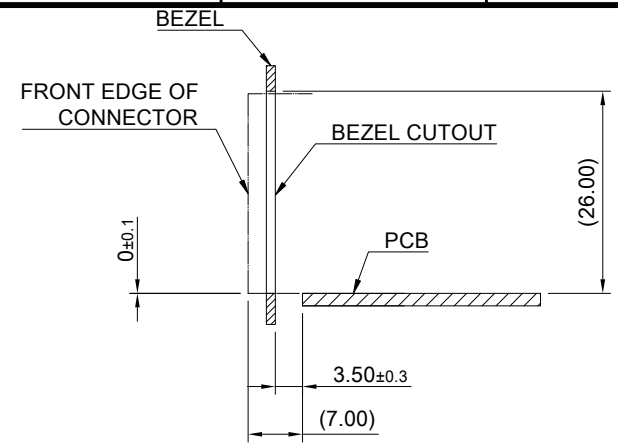
**ELECTRICAL CHARACTERISTICS**  
 CONTACT CURRENT RATING: 0.5 AMPERE  
 VOLTAGE RATING: 30 VAC  
 CONTACT RESISTANCE: 80 mΩ MAX.  
 DIELECTRIC WITHSTANDING VOLTAGE: 300VAC



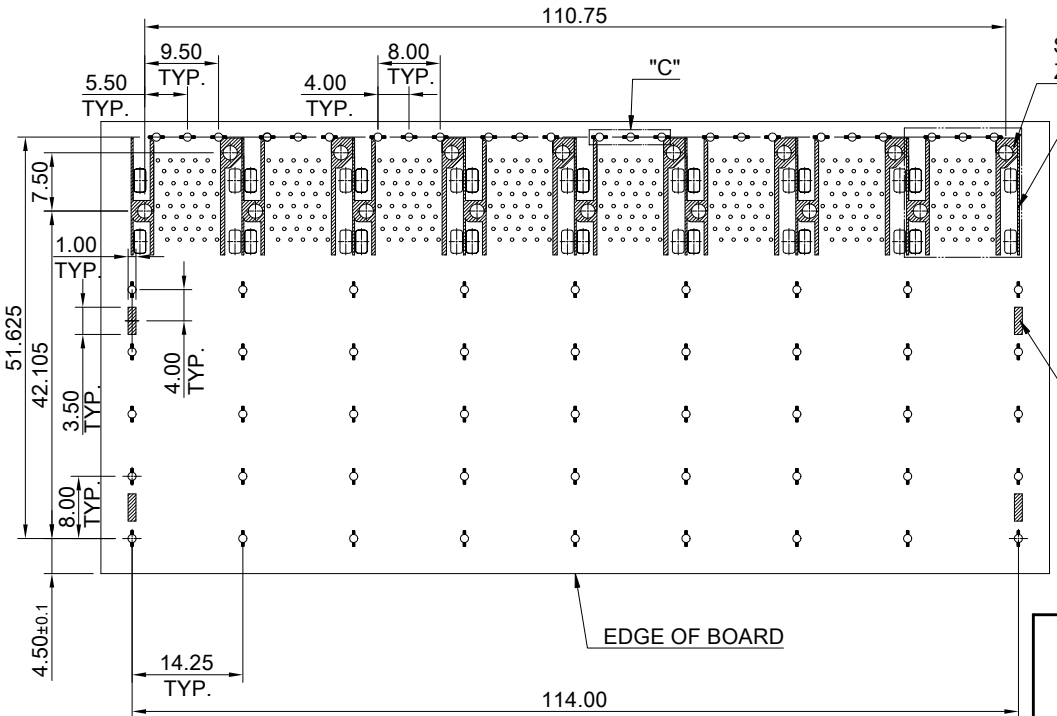
	TITLE: Transformed SFP 2X8 w/ Light Pipe		SHEET: 1/3	REV. C
	DWG#: R-OP-008320-7-F-N-18		CHECKED: Gary Kang	
	UNIT: mm	SCALE: A4 2:3	APPROVED: George Yang	
	TOLERANCE: Angle: ± 1° X ± 0.25 .X ± 0.20 .XX ± 0.15		MATERIAL: RoHS Compliant	DATE: 04/07/2022
		THIRD ANGLE PROJECTION	DRAWN: Laura	



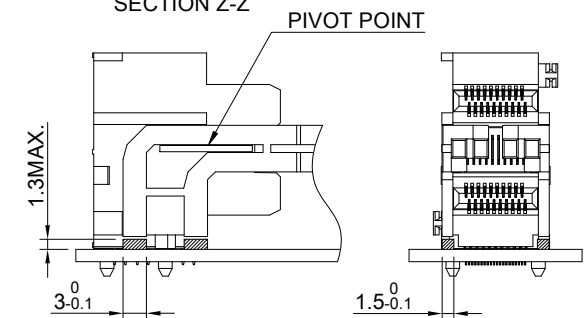
RECOMMENDED BEZEL CUT-OUT SPACING DETAIL  
BEZEL THICKNESS 0.8~2.6MM



SECTION Z-Z

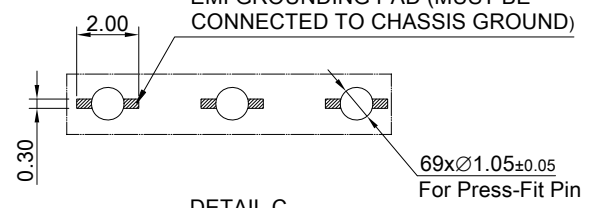


RECOMMENDED PCB LAYOUT-COMPONENT SIDE  
RECOMMENDED PCB THICKNESS- 1.57 MM  
THE ENTIRE AREA OF THE KEEP-OUT ZONE FOR COMPONENTS  
(OTHER THAN LIGHT PIPE LED'S)  
THIS AREA IS INDICATED BY THE DASHED LINE





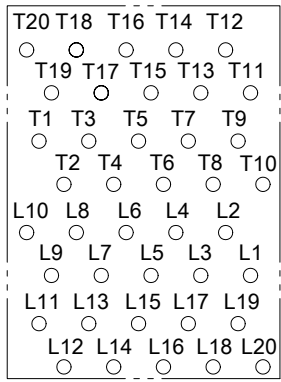
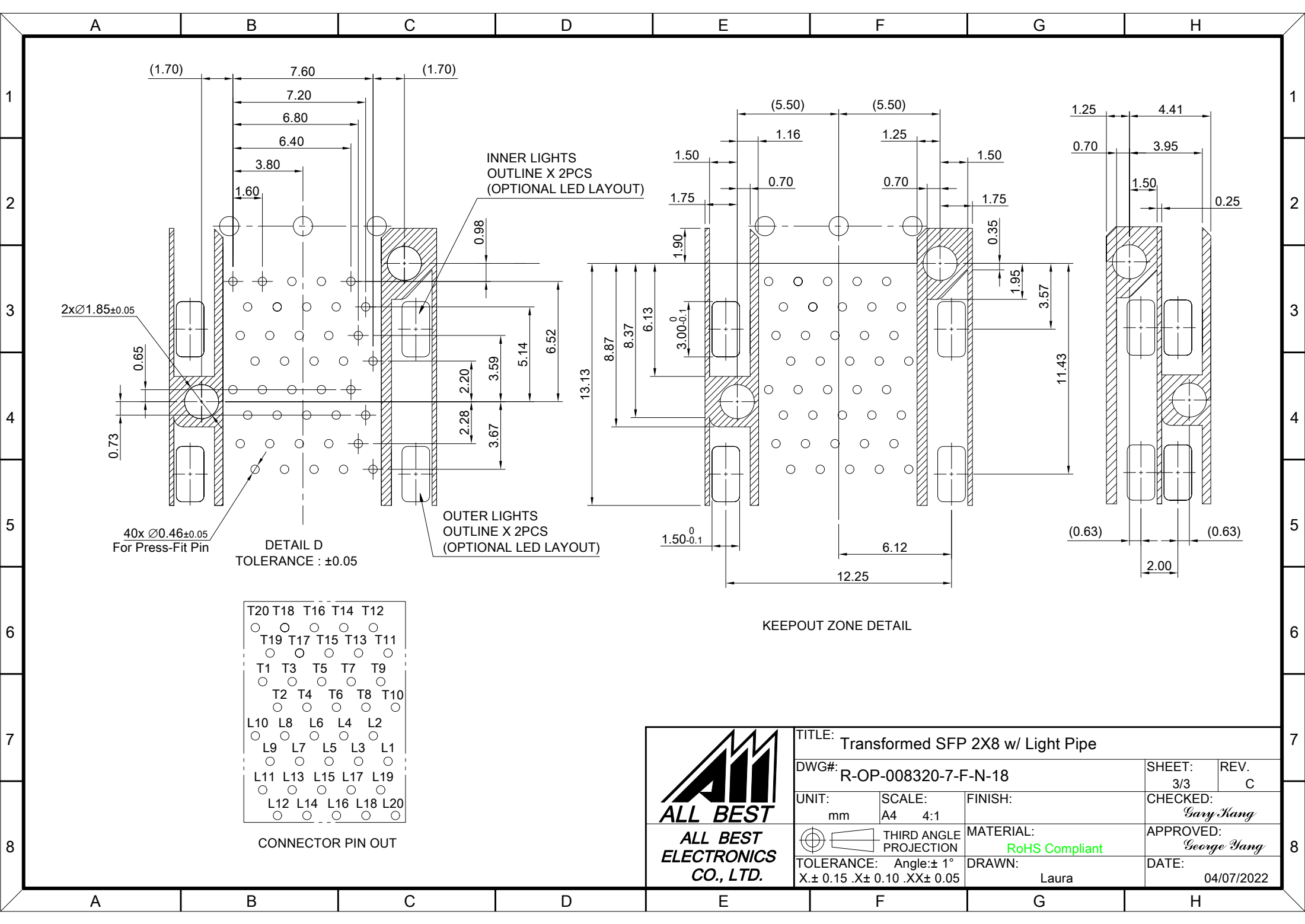
LED CLEARANCE REQUIREMENTS

CROSS HATCHED AREA DENOTES  
EMI GROUNDING PAD (MUST BE  
CONNECTED TO CHASSIS GROUND)



DETAIL C  
SCALE 4:1

 <b>ALL BEST</b> <b>ELECTRONICS</b> <b>CO., LTD.</b>	TITLE: Transformed SFP 2X8 w/ Light Pipe		SHEET: 2/3	REV. C
	DWG#: R-OP-008320-7-F-N-18		CHECKED: Gary Kang	
UNIT: mm	SCALE: A4 1:1	FINISH:	APPROVED: George Yang	
 THIRD ANGLE PROJECTION TOLERANCE: Angle: ± 1° X: ± 0.15 .X ± 0.10 .XX ± 0.05		MATERIAL: RoHS Compliant	DATE: 04/07/2022	
		DRAWN: Laura		



TITLE: Transformed SFP 2X8 w/ Light Pipe			
DWG#: R-OP-008320-7-F-N-18		SHEET: 3/3	REV. C
UNIT: mm	SCALE: A4 4:1	FINISH:	CHECKED: Gary Kang
THIRD ANGLE PROJECTION		MATERIAL: RoHS Compliant	APPROVED: George Yang
TOLERANCE: Angle: ± 1° X ± 0.15 .X ± 0.10 .XX ± 0.05		DRAWN: Laura	DATE: 04/07/2022