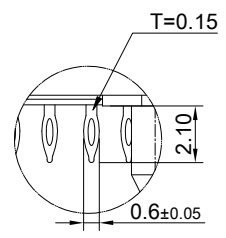
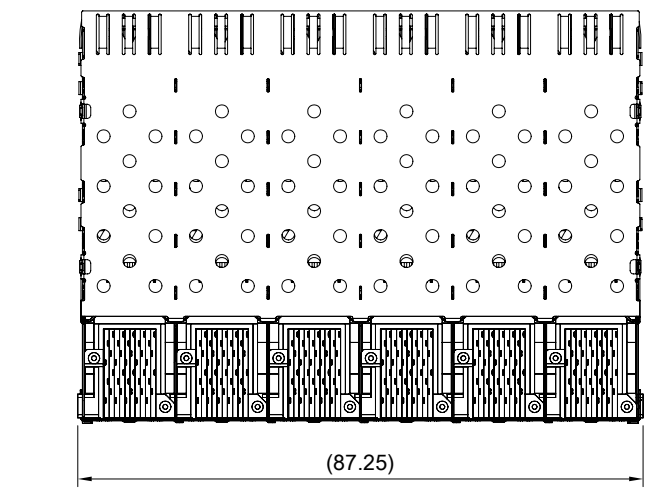
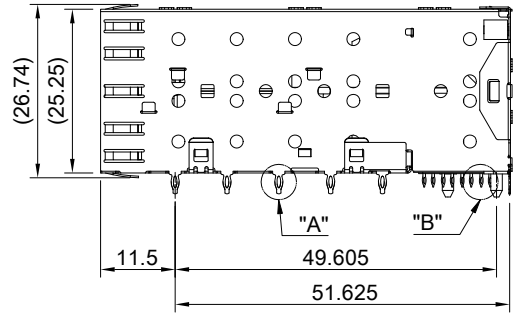
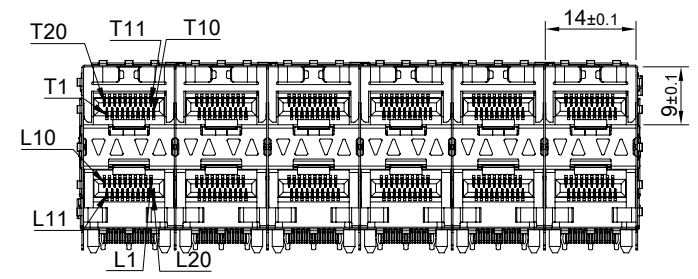
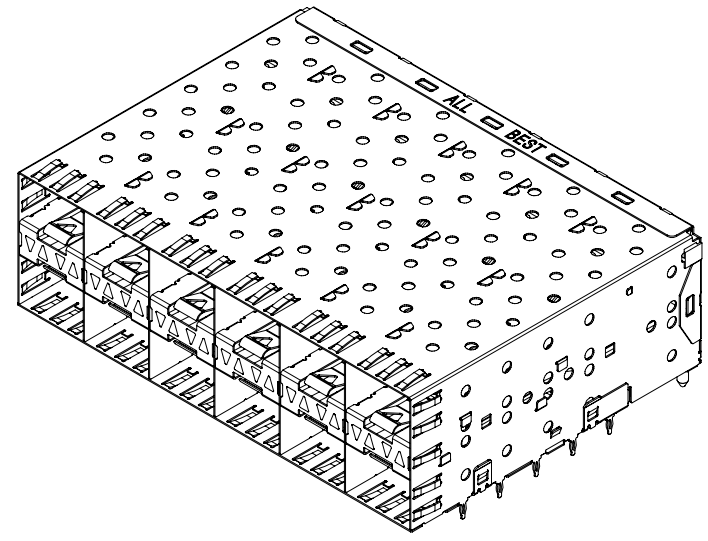


DETAIL A
SCALE 5 : 1



DETAIL B
SCALE 5 : 1

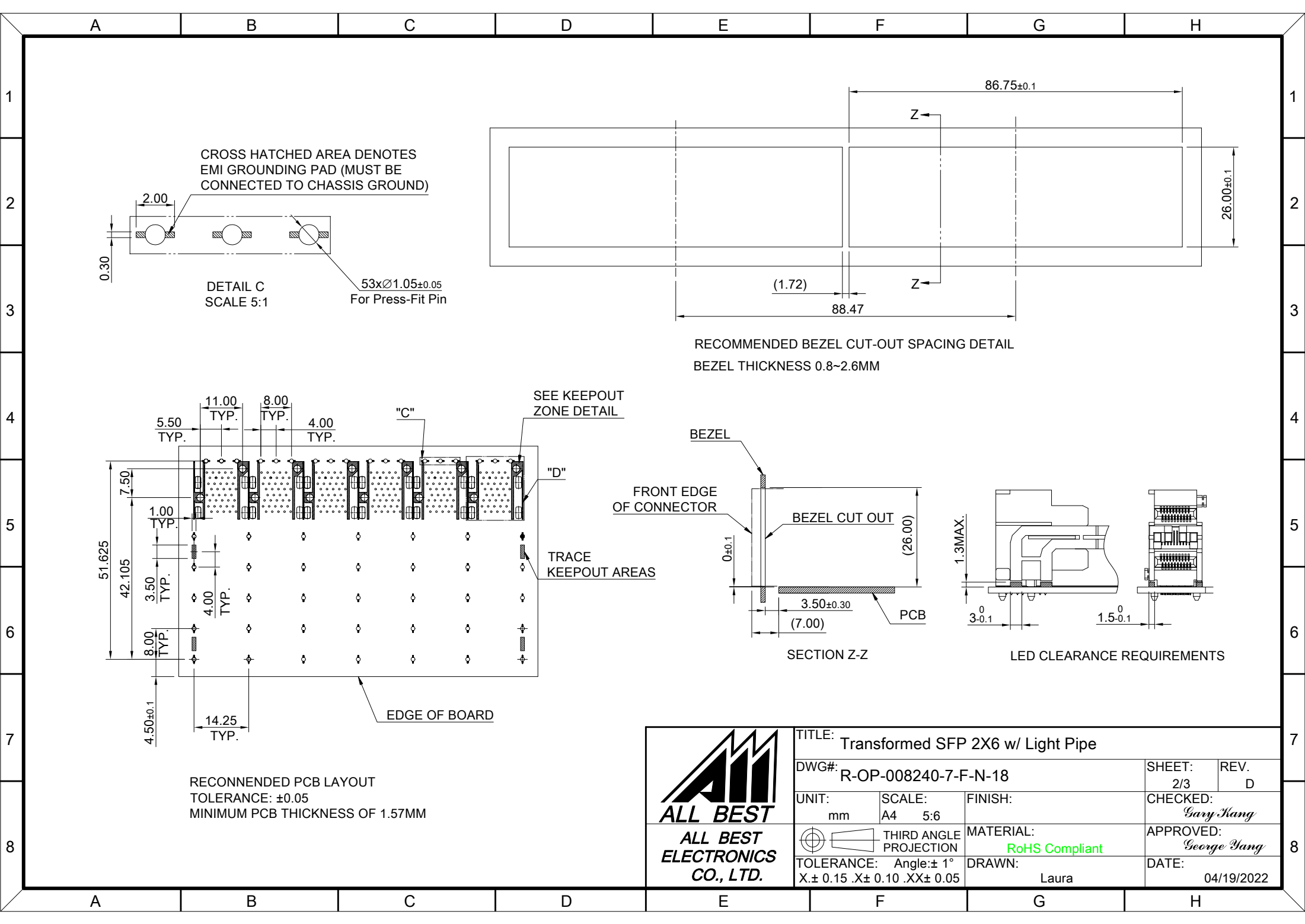


MATERIAL
 CAGE: NICKEL SILVER
 CONNECTOR: PA9T 94V-0 (BLACK)
 LCP 94V-0 (DARK GRAY)
 COPPER ALLOY
 LIGHT PIPE: PC
 FINISH
 CONTACT: 15µ" MIN. GOLD ON MATING END;
 30µ" MIN. TIN ON TERMINATION END;
 ALL UNDERPLATED 50µ" MIN. NICKEL

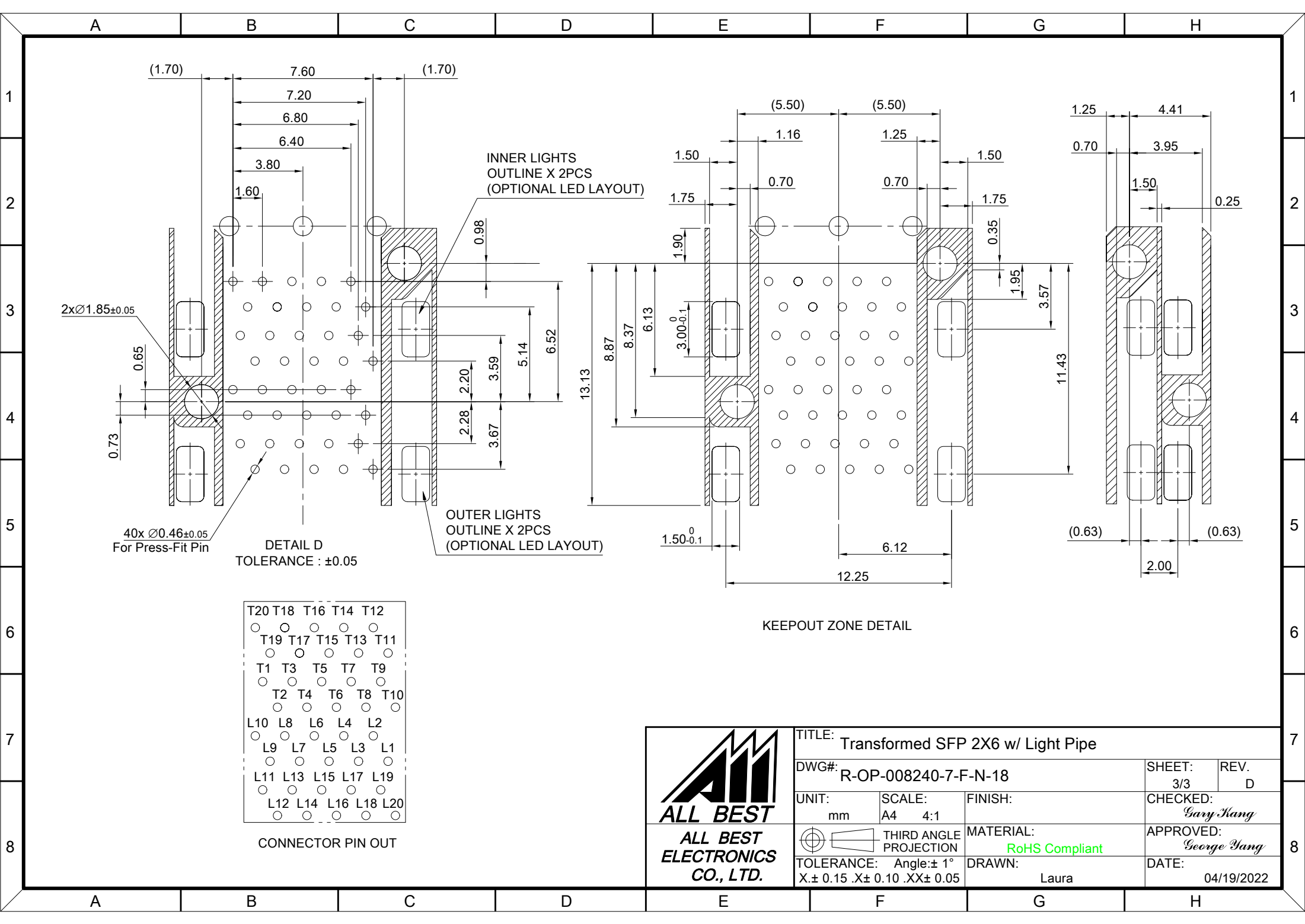
ELECTRICAL CHARACTERISTICS
 CONTACT CURRENT RATING: 0.5 AMPERE
 VOLTAGE RATING: 30 VAC
 CONTACT RESISTANCE: 80 mΩ MAX.
 DIELECTRIC WITHSTANDING VOLTAGE: 300VAC



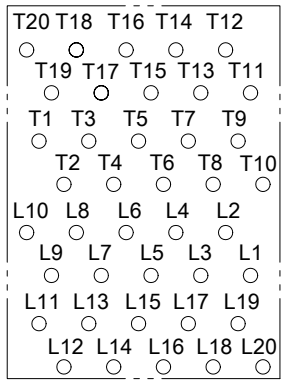
TITLE: Transformed SFP 2X6 w/ Light Pipe			
DWG#: R-OP-008240-7-F-N-18		SHEET: 1/3	REV. D
UNIT: mm	SCALE: A4 5:6	FINISH:	CHECKED: Gary Kang
THIRD ANGLE PROJECTION		MATERIAL: RoHS Compliant	APPROVED: George Yang
TOLERANCE: Angle: ± 1° X: ± 0.25 .X: ± 0.20 .XX: ± 0.15		DRAWN: Laura	DATE: 04/19/2022



TITLE: Transformed SFP 2X6 w/ Light Pipe			
DWG#: R-OP-008240-7-F-N-18		SHEET: 2/3	REV. D
UNIT: mm	SCALE: A4 5:6	CHECKED: Gary Kang	
THIRD ANGLE PROJECTION		APPROVED: George Yang	
TOLERANCE: Angle: \pm 1° X: \pm 0.15 .X: \pm 0.10 .XX: \pm 0.05		MATERIAL: RoHS Compliant	DATE: 04/19/2022
		DRAWN: Laura	



DETAIL D
TOLERANCE : ±0.05



CONNECTOR PIN OUT

KEEPOUT ZONE DETAIL

<p>ALL BEST ELECTRONICS CO., LTD.</p>	TITLE: Transformed SFP 2X6 w/ Light Pipe		
	DWG#: R-OP-008240-7-F-N-18		SHEET: 3/3
	UNIT: mm	SCALE: A4 4:1	REV. D
	THIRD ANGLE PROJECTION		CHECKED: Gary Kang
TOLERANCE: Angle: ± 1° X ± 0.15 .X ± 0.10 .XX ± 0.05		MATERIAL: RoHS Compliant	APPROVED: George Yang
		DRAWN: Laura	DATE: 04/19/2022