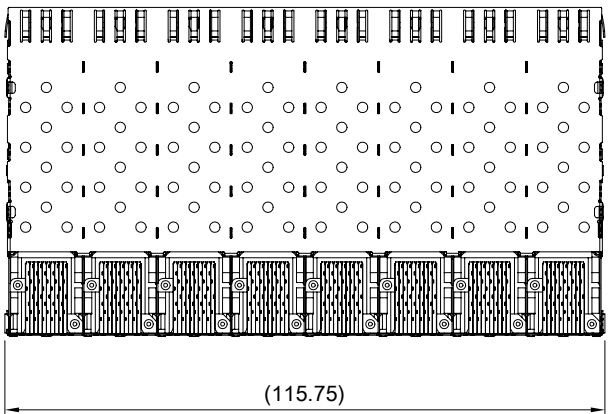
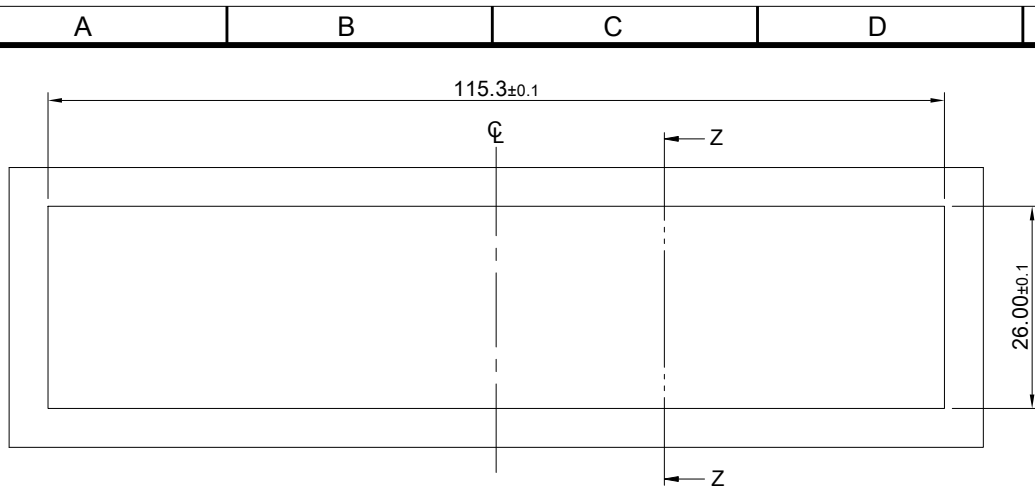


MATERIAL  
 CAGE: NICKEL SILVER  
 CONNECTOR: PA9T 94V-0 (BLACK)  
 LCP 94V-0 (DARK GRAY)  
 COPPER ALLOY  
 LIGHT PIPE: PC (CLEAR)  
 FINISH  
 CONTACT: 15µ" MIN. GOLD ON MATING END;  
 30µ" MIN. MATTE TIN ON TERMINATION END;  
 ALL UNDERPLATED 50µ" MIN. NICKEL

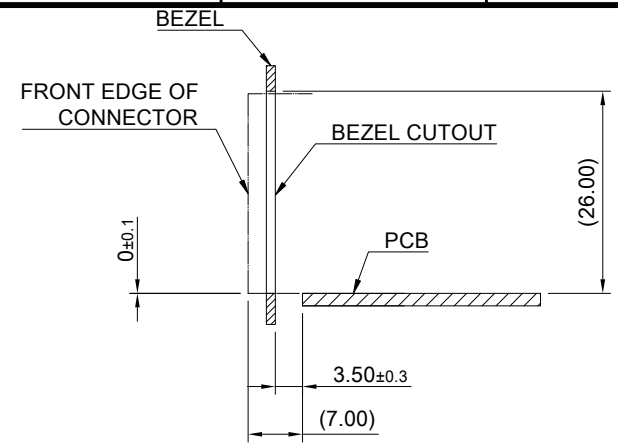
ELECTRICAL CHARACTERISTICS  
 CONTACT CURRENT RATING: 0.5 AMPERE  
 VOLTAGE RATING: 30 VAC  
 CONTACT RESISTANCE: 80 mΩ MAX.  
 DIELECTRIC WITHSTANDING VOLTAGE: 300VAC



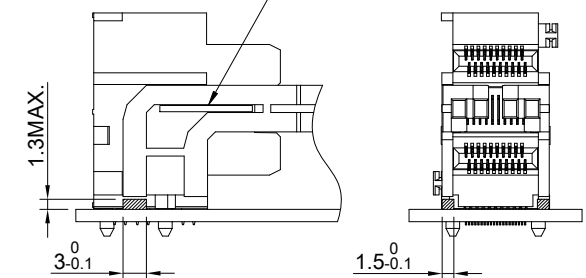
	TITLE: Transformed SFP 2X8 w/ Light Pipe		SHEET: 1/3	REV. C	
	DWG#: R-OP-008320-7-F-N-20		CHECKED: Gary Kang		
	UNIT: mm	SCALE: A4 2:3	FINISH: RoHS Compliant	APPROVED: George Yang	
	TOLERANCE: Angle: ± 1° X ± 0.25 .X ± 0.20 .XX ± 0.15		DRAWN: Laura	DATE: 04/08/2022	



RECOMMENDED BEZEL CUT-OUT SPACING DETAIL  
BEZEL THICKNESS 0.8~2.6MM

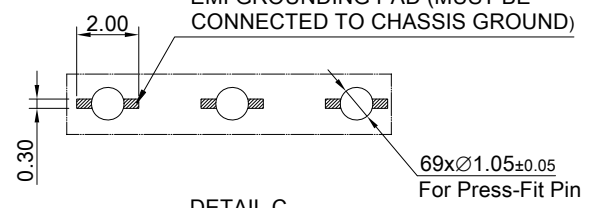


SECTION Z-Z  
PIVOT POINT

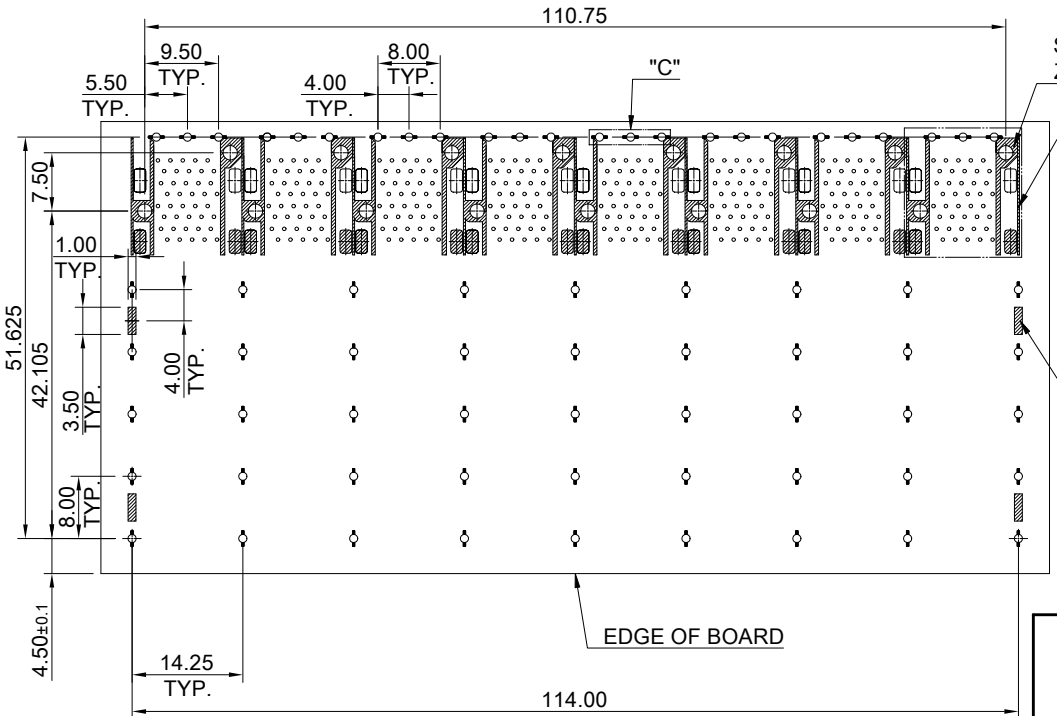


LED CLEARANCE REQUIREMENTS

CROSS HATCHED AREA DENOTES  
EMI GROUNDING PAD (MUST BE  
CONNECTED TO CHASSIS GROUND)



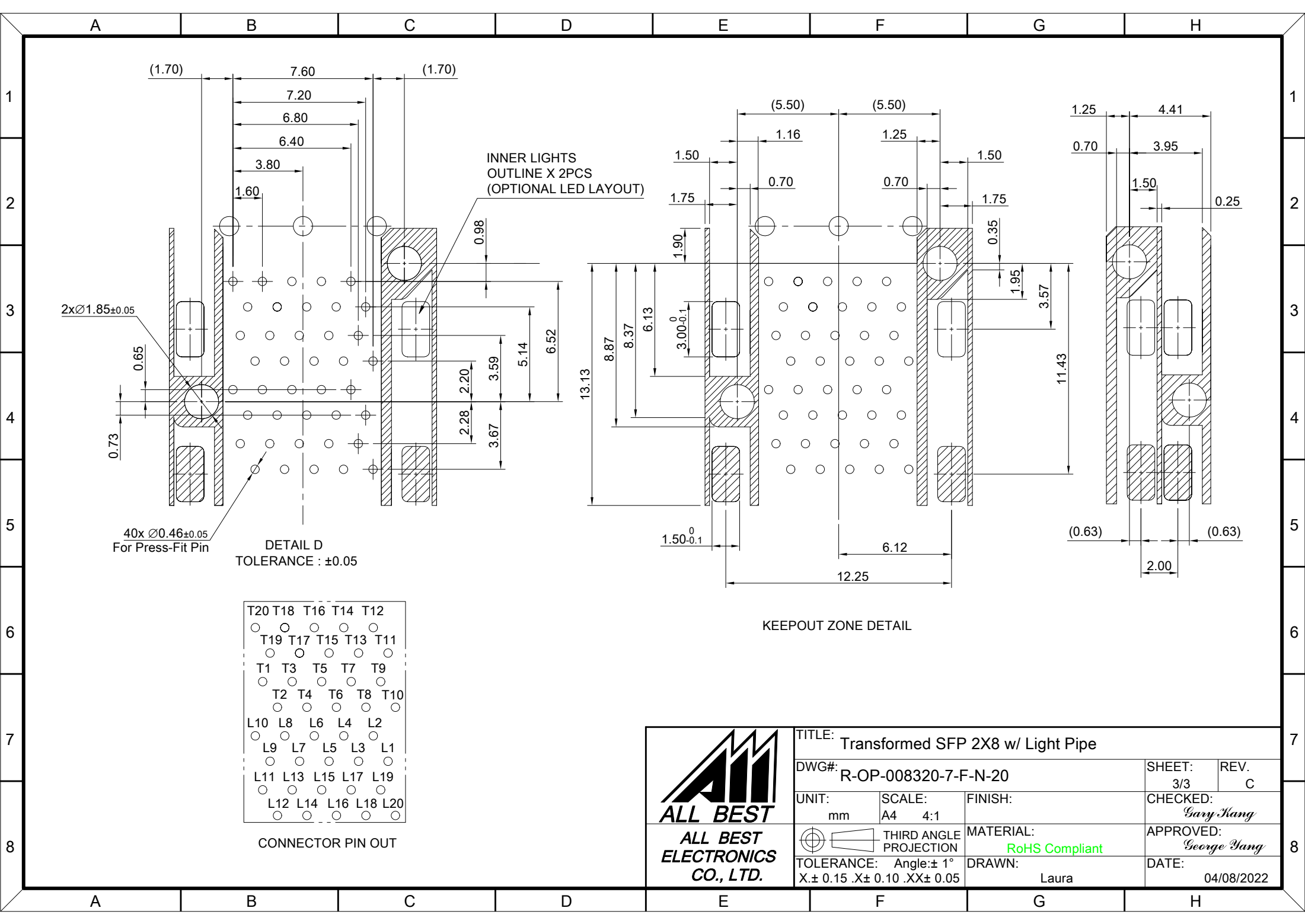
DETAIL C  
SCALE 4:1



RECOMMENDED PCB LAYOUT-COMPONENT SIDE  
RECOMMENDED PCB THICKNESS- 1.57 MM  
THE ENTIRE AREA OF THE KEEP-OUT AREA FOR COMPONENTS  
(OTHER THAN LIGHT PIPE LED'S)  
THIS AREA IS INDICATED BY THE DASHED LINE



TITLE: Transformed SFP 2X8 w/ Light Pipe			
DWG#: R-OP-008320-7-F-N-20		SHEET: 2/3	REV. C
UNIT: mm	SCALE: A4 1:1	CHECKED: Gary Kang	
THIRD ANGLE PROJECTION		APPROVED: George Yang	
TOLERANCE: Angle: ± 1°		DATE: 04/08/2022	
X.± 0.15 .X± 0.10 .XX± 0.05		DRAWN: Laura	



(1.70) 7.60 (1.70)

7.20

6.80

6.40

3.80

1.60

INNER LIGHTS  
OUTLINE X 2PCS  
(OPTIONAL LED LAYOUT)

0.98

2x $\varnothing 1.85 \pm 0.05$

0.65

0.73

2.20

3.59

5.14

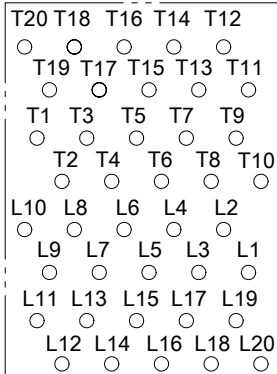
6.52

2.28

3.67

40x  $\varnothing 0.46 \pm 0.05$   
For Press-Fit Pin

DETAIL D  
TOLERANCE :  $\pm 0.05$



CONNECTOR PIN OUT

(5.50) (5.50)

1.16

1.25

1.50

0.70

0.70

1.50

1.75

0.35

1.95

3.57

1.25

4.41

0.70

3.95

1.50

0.25

13.13

8.87

8.37

6.13

3.00 $^{0}_{-0.1}$

1.90

1.50 $^{0}_{-0.1}$

6.12

12.25

(0.63)

(0.63)

2.00

KEEPOUT ZONE DETAIL



TITLE: Transformed SFP 2X8 w/ Light Pipe			
DWG#: R-OP-008320-7-F-N-20		SHEET: 3/3	REV. C
UNIT: mm	SCALE: A4 4:1	FINISH:	CHECKED: Gary Kang
THIRD ANGLE PROJECTION		MATERIAL: RoHS Compliant	APPROVED: George Yang
TOLERANCE: Angle: $\pm 1^\circ$ X: $\pm 0.15$ .X: $\pm 0.10$ .XX: $\pm 0.05$		DRAWN: Laura	DATE: 04/08/2022