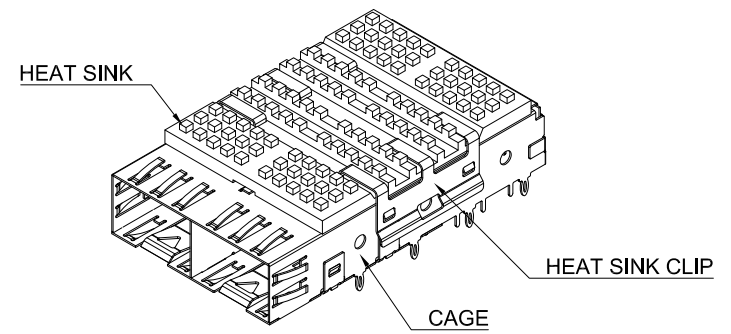
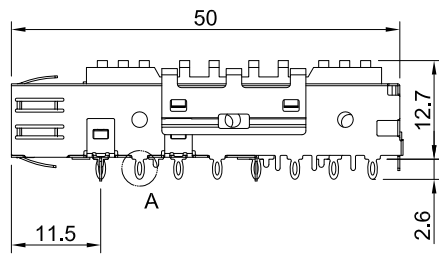
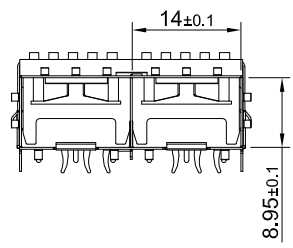


DETAIL A  
SCALE 4:1

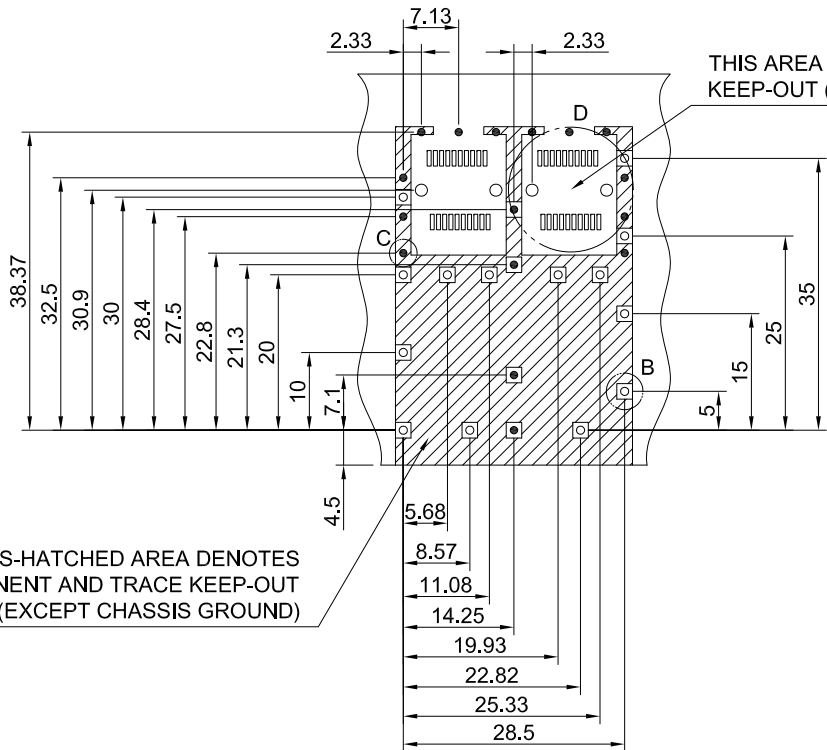


MATERIAL  
 CAGE: NICKEL SILVER  
 HEAT SINK: ALUMINUM  
 HEAT SINK CLIP: STAINLESS STEEL

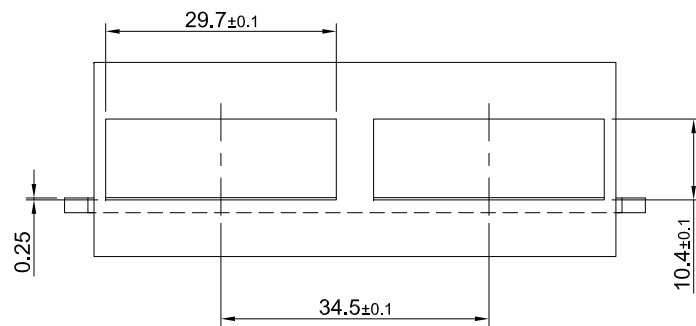
FINISH  
 HEAT SINK: ANODE PROCESS



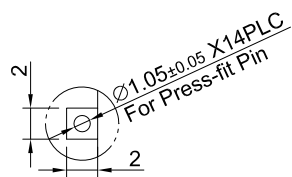
 <b>ALL BEST</b> ALL BEST ELECTRONICS CO., LTD.	TITLE: SFP+ 1X2 Cage Assembly w/ PCI Heat Sink		SHEET:	REV.
	DWG#: R-SH-008040-6-K-03		1/2	A
	UNIT: mm	SCALE: A4 1:1	FINISH:	CHECKED: <i>Gary Kang</i>
	THIRD ANGLE PROJECTION TOLERANCE: Angle: ± 1° X, ± 0.25 .X ± 0.20 .XX ± 0.15		MATERIAL: RoHS Compliant	APPROVED: <i>George Yang</i>
			DRAWN: Ting	DATE: 03/05/2015



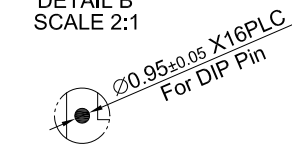
RECOMMENDED PCB LAYOUT  
TOLERANCE:  $\pm 0.05$



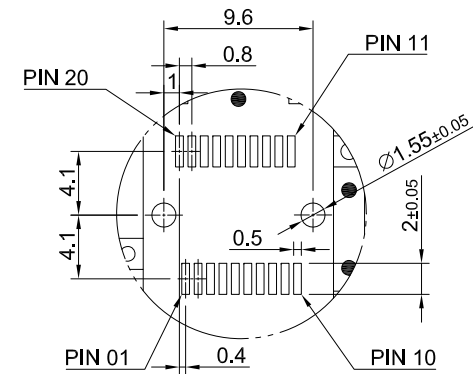
RECOMMENDED BEZEL CUT-OUT



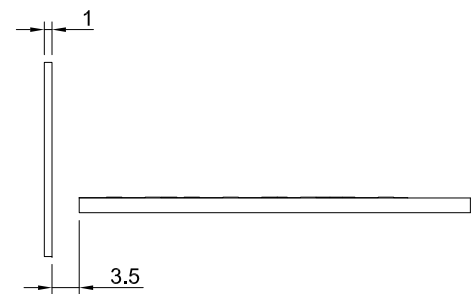
DETAIL B  
SCALE 2:1



DETAIL C  
SCALE 2:1



DETAIL D  
SCALE 2:1



	TITLE: SFP+ 1X2 Cage Assembly w/ PCI Heat Sink			SHEET: 2/2	REV. A
	DWG#: R-SH-008040-6-K-03			CHECKED: Gary Kang	
	UNIT: mm	SCALE: A4 1:1	FINISH:	APPROVED: George Yang	
	TOLERANCE: $X \pm 0.15$ , $.X \pm 0.10$ , $.XX \pm 0.05$		MATERIAL: RoHS Compliant	DATE: 03/05/2015	
THIRD ANGLE PROJECTION		DRAWN: Ting			