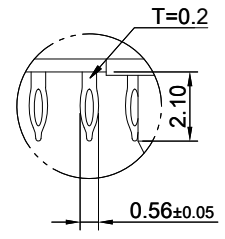
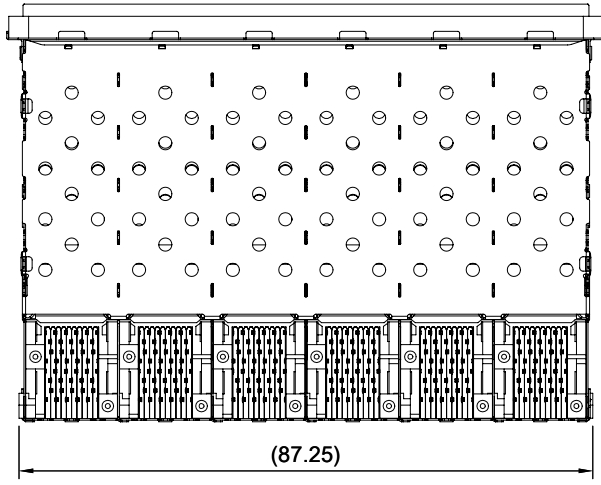
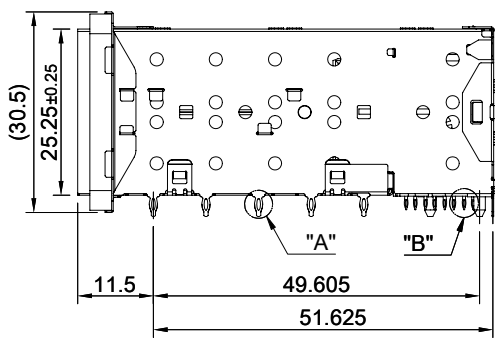
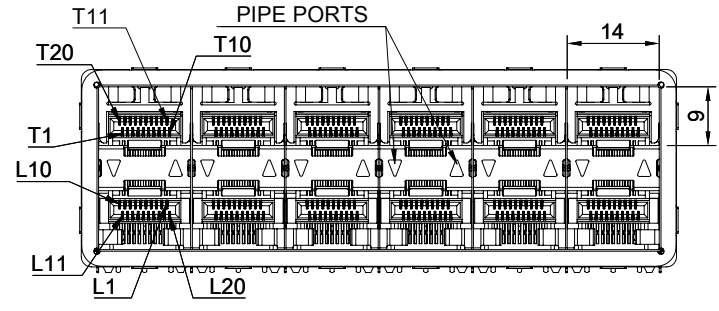
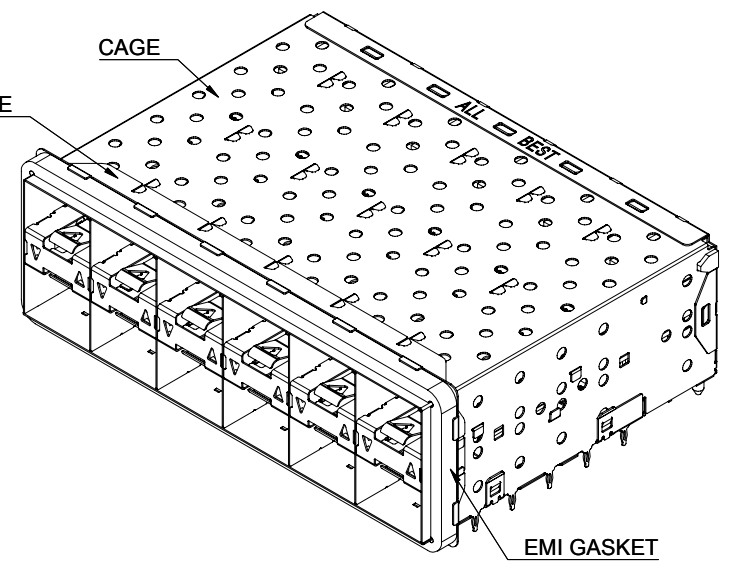


DETAIL A
SCALE 5:1



DETAIL B
SCALE 5:1



MATERIAL
 CAGE: NICKEL SILVER
 CONNECTOR: LCP 94V-0
 COPPER ALLOY
 EMI GASKET FLANGE: NICKEL SILVER
 EMI GASKET: CONDUCTIVE ELASTOMER,(BLACK)

FINISH
 CONTACT: 15µ" MIN. GOLD ON MATING END;
 30µ" MIN. MATTE TIN ON TERMINATION END;
 ALL UNDERPLATED NICKEL

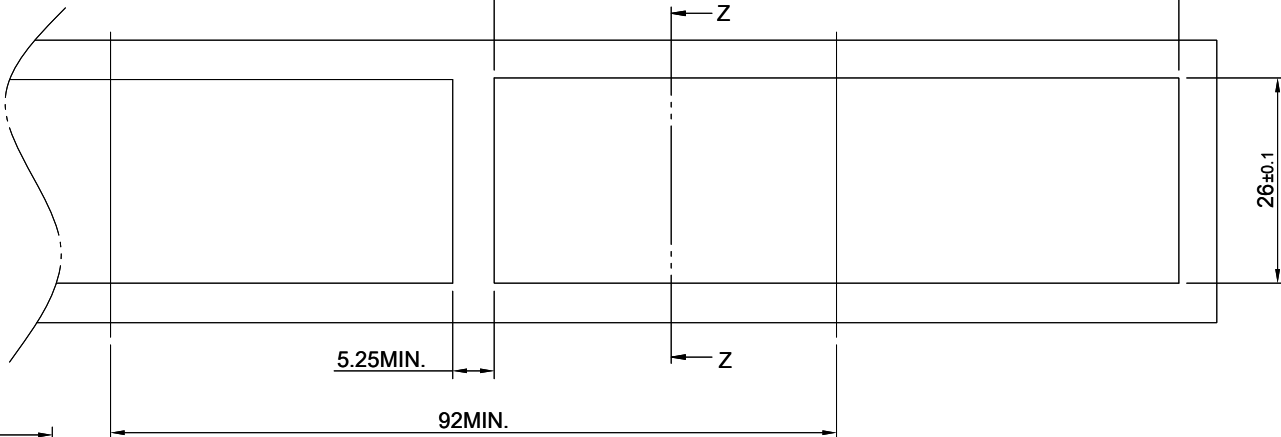
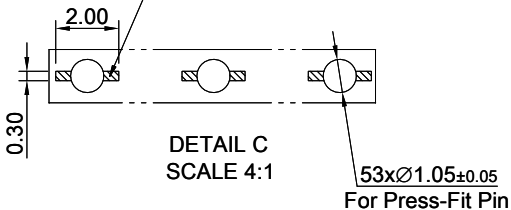
ELECTRICAL CHARACTERISTICS
 CONTACT CURRENT RATING: 0.5 AMPERE
 VOLTAGE RATING: 30 VAC
 CONTACT RESISTANCE: 80 mΩ MAX.
 DIELECTRIC WITHSTANDING VOLTAGE: 300 VAC

THIS PRINT IS
PRELIMINARY
 UNQUALIFIED PRODUCT
 CONTACT PRODUCT ENGINEERING
 BEFORE USING THIS PRINT

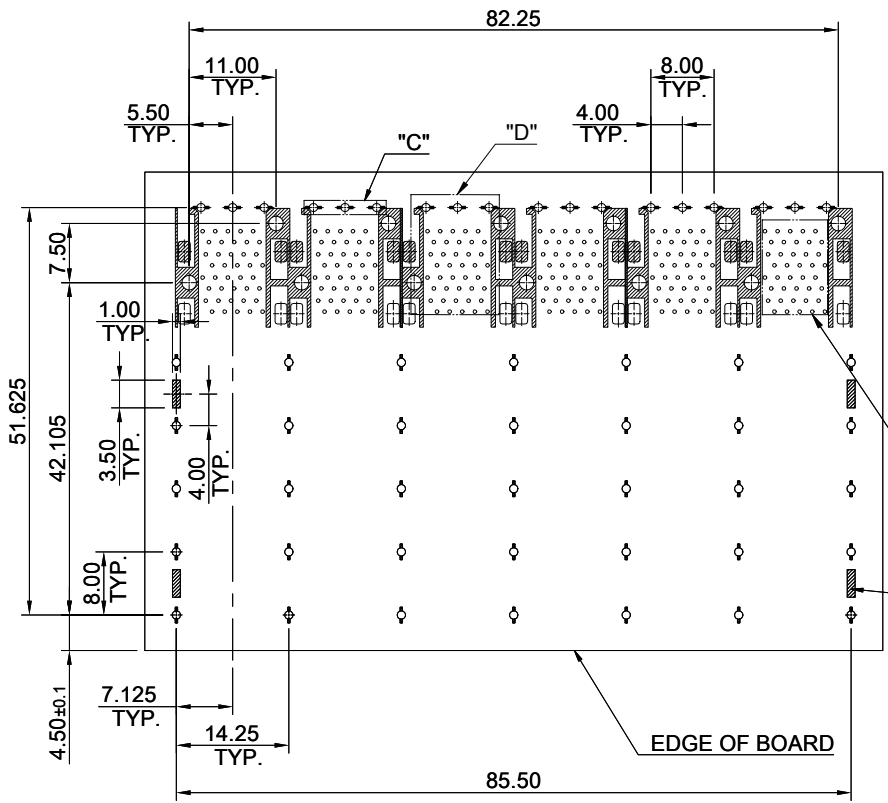


| | | | |
|---|---------------|--------------------------|------------------|
| TITLE: Stacked SFP+ 2X6 ASS'Y w/ Internal Thermal Solution & Light Pipe | | | |
| DWG#: R-OP-008240-7-F-N2-33 | | SHEET: 1/3 | REV. REF |
| UNIT: mm | SCALE: A4 6:5 | FINISH: | CHECKED: |
| TOLERANCE: Angle: ± 1° X ± 0.25 .X ± 0.20 .XX ± 0.15 | | MATERIAL: RoHS Compliant | APPROVED: |
| THIRD ANGLE PROJECTION | | DRAWN: Laura | DATE: 03/22/2024 |

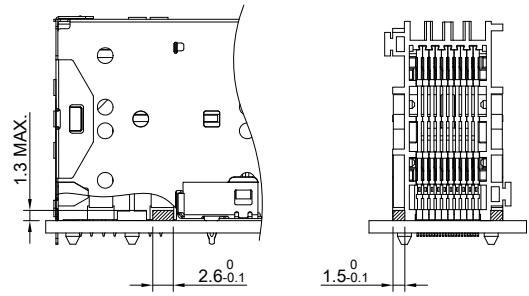
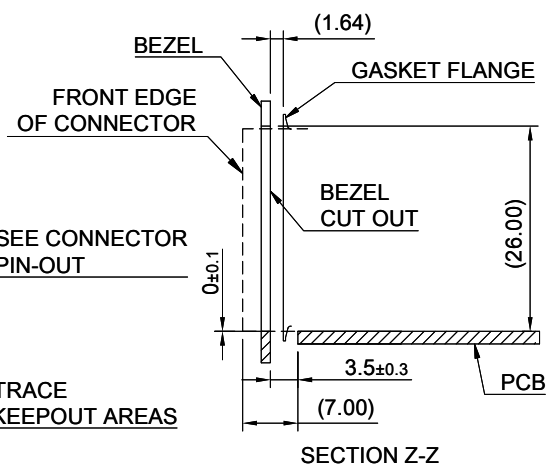
CROSS HATCHED AREA DENOTES EMI GROUNDING PAD (MUST BE CONNECTED) TO CHASSIS GROUND



RECOMMENDED BEZEL CUT-OUT SPACING DETAIL
BEZEL THICKNESS 0.8~2.6MM



RECOMMENDED PCB LAYOUT
TOLERANCE : ±0.05
MINIMUM PCB THICKNESS OF 1.57MM

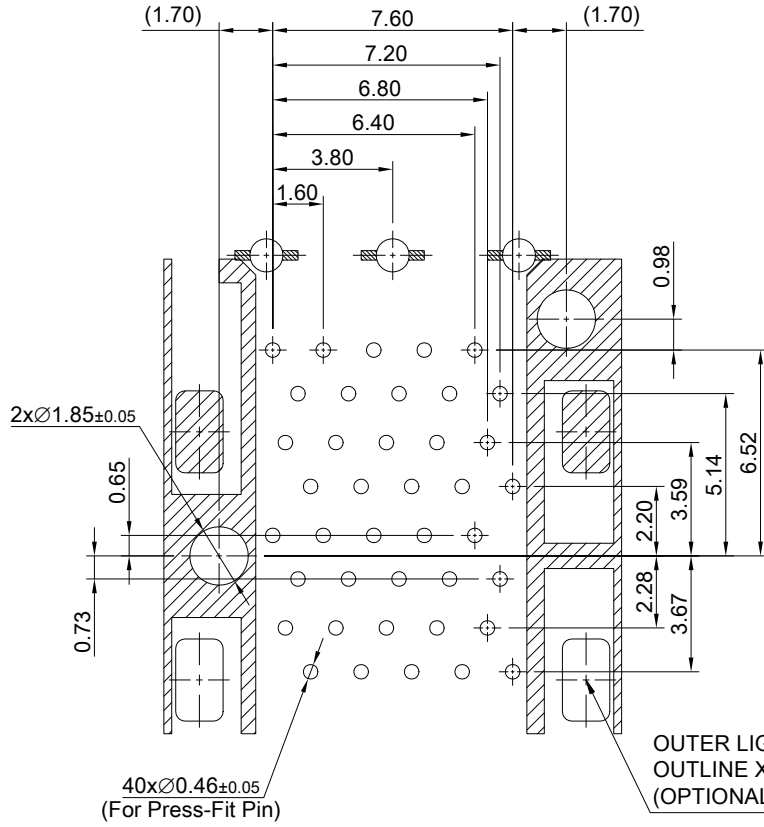


LED CLEARANCE REQUIREMENTS



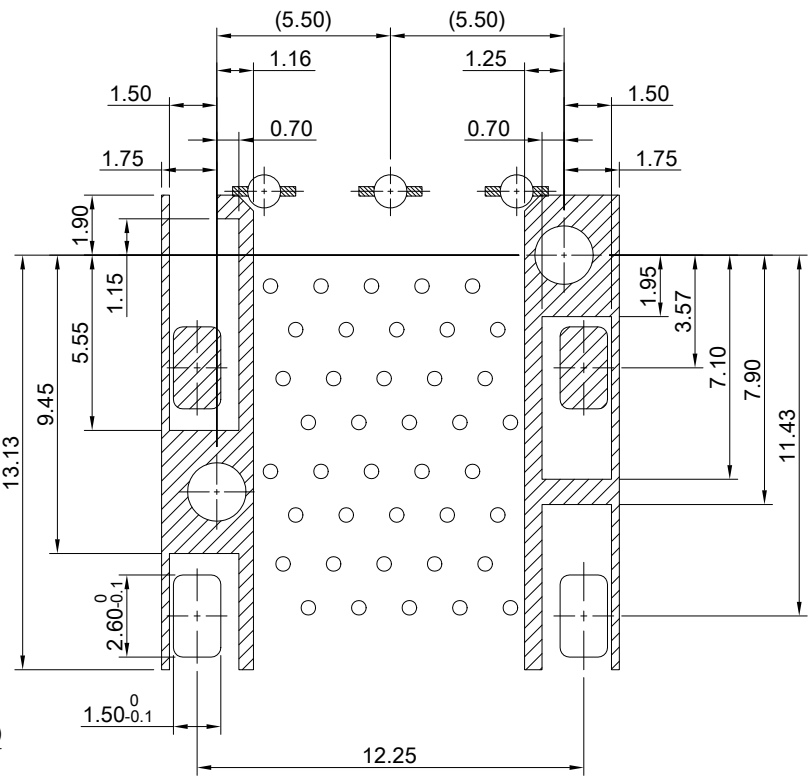
THIS PRINT IS
PRELIMINARY
UNQUALIFIED PRODUCT
CONTACT PRODUCT ENGINEERING
BEFORE USING THIS PRINT

| | | | | |
|---|---------------|--------------------------|------------------|-----------|
| TITLE: Stacked SFP+ 2X6 ASS'Y w/ Internal Thermal Solution & Light Pipe | | | SHEET: 2/3 | REV. REF |
| DWG#: R-OP-008240-7-F-N2-33 | | | CHECKED: | APPROVED: |
| UNIT: mm | SCALE: A4 1:1 | FINISH: | DATE: 03/22/2024 | |
| TOLERANCE: Angle: ± 1° X.± 0.15 .X± 0.10 .XX± 0.05 | | MATERIAL: RoHS Compliant | DRAWN: Laura | |
| THIRD ANGLE PROJECTION | | | | |

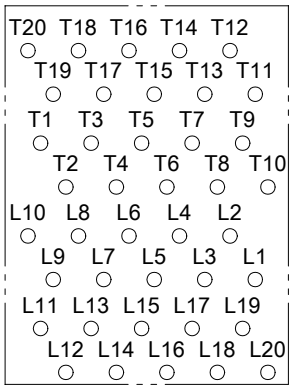
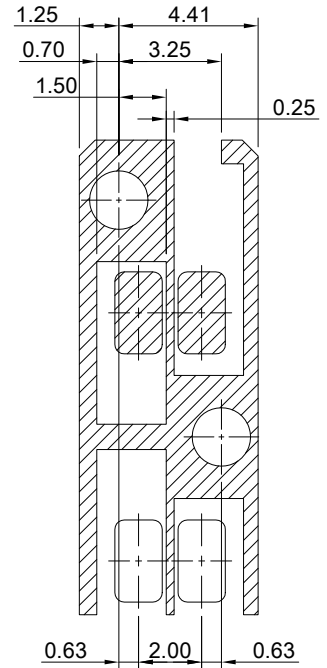


OUTER LIGHTS
OUTLINE X 2PCS
(OPTIONAL LED LAYOUT)

DETAIL D
TOLERANCE: ± 0.05



KEEPOUT ZONE DETAIL



CONNECTOR PIN OUT

THIS PRINT IS
PRELIMINARY
UNQUALIFIED PRODUCT
CONTACT PRODUCT ENGINEERING
BEFORE USING THIS PRINT



| | | | |
|---|---------------|--------------------------|------------------|
| TITLE: Stacked SFP+ 2X6 ASS'Y w/ Internal Thermal Solution & Light Pipe | | | |
| DWG#: R-OP-008240-7-F-N2-33 | | SHEET: 3/3 | REV. REF |
| UNIT: mm | SCALE: A4 4:1 | FINISH: | CHECKED: |
| TOLERANCE: Angle: $\pm 1^\circ$ X. ± 0.15 .X ± 0.10 .XX ± 0.05 | | MATERIAL: RoHS Compliant | APPROVED: |
| THIRD ANGLE PROJECTION | | DRAWN: Laura | DATE: 03/22/2024 |