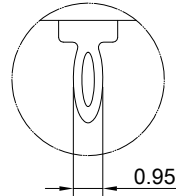
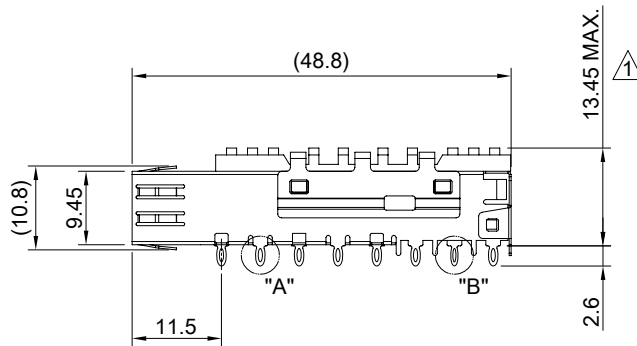
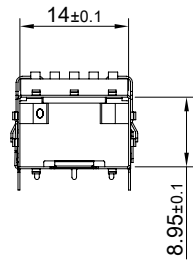
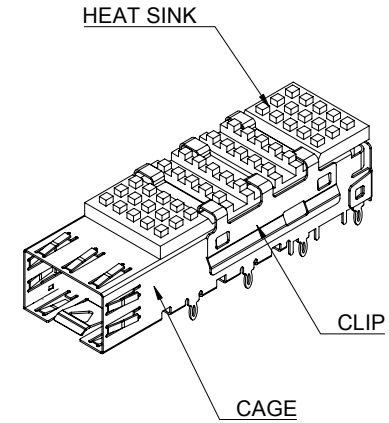


DETAIL A  
SCALE 4:1



DETAIL B  
SCALE 4:1



MATERIAL  
CAGE: NICKEL SILVER  
HEAT SINK: ALUMINUM  
HEAT SINK CLIP: STAINLESS STEEL

FINISH  
HEAT SINK: ANODE PROCESS

NOTE  
△ DIMENSION APPLIES WITH MODULE INSERTED IN CAGE



TITLE: SFP+ Cage One-Piece Press Fit Pins w/ PCI Heat Sink

DWG#: R-SH-008020-6-K-03

SHEET: 1/3	REV. C
---------------	-----------

UNIT: mm	SCALE: A4 1:1	FINISH:
-------------	------------------	---------

CHECKED:  
*Gary Kang*

THIRD ANGLE  
PROJECTION

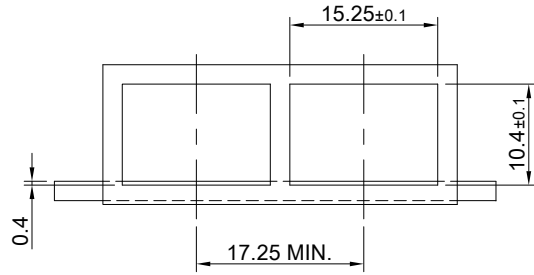
MATERIAL:  
RoHS Compliant

APPROVED:  
*George Yang*

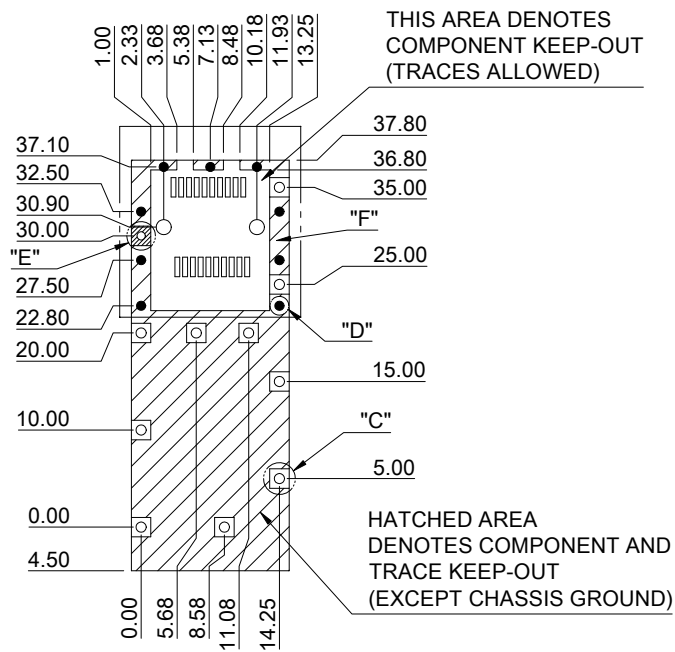
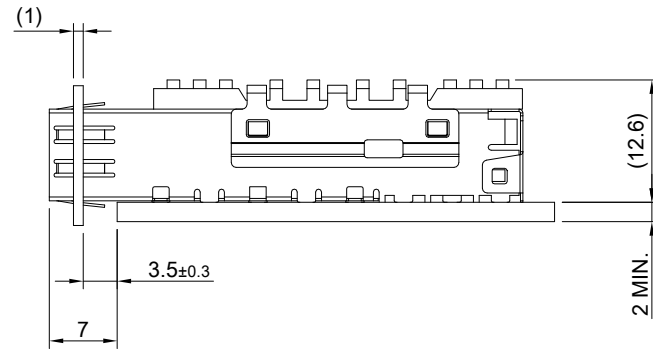
TOLERANCE: Angle: ± 1°  
X ± 0.25 .X ± 0.20 .XX ± 0.15

DRAWN:  
Jun

DATE:  
07/22/2020



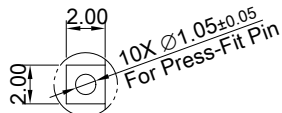
RECOMMENDED BEZEL CUT-OUT



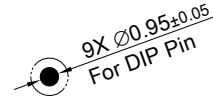
THIS AREA DENOTES COMPONENT KEEP-OUT (TRACES ALLOWED)

HATCHED AREA DENOTES COMPONENT AND TRACE KEEP-OUT (EXCEPT CHASSIS GROUND)

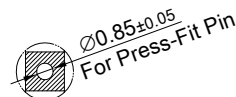
RECOMMENDED PCB LAYOUT TOLERANCE: ±0.05



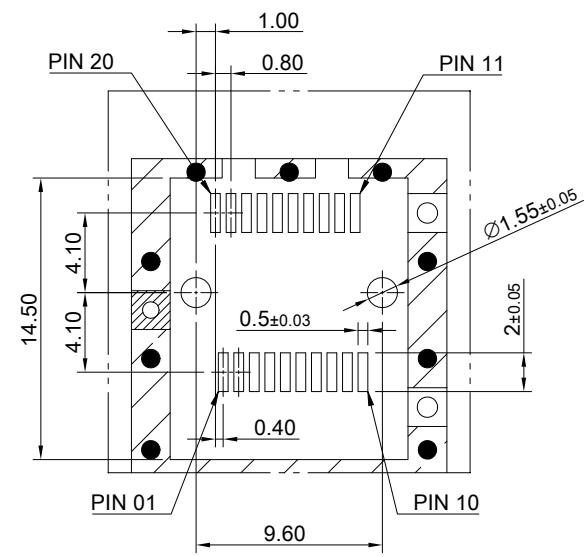
DETAIL C SCALE 2:1



DETAIL D SCALE 2:1



DETAIL E SCALE 2:1

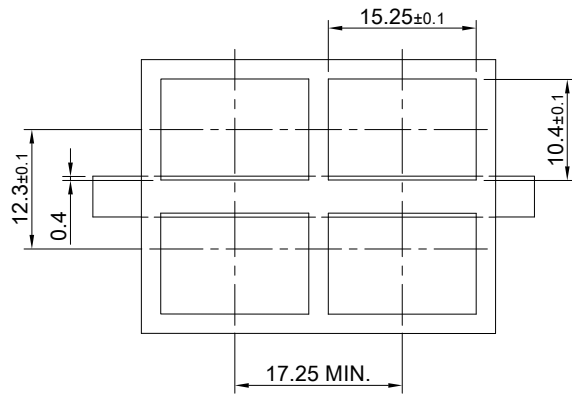


DETAIL F SCALE 2:1

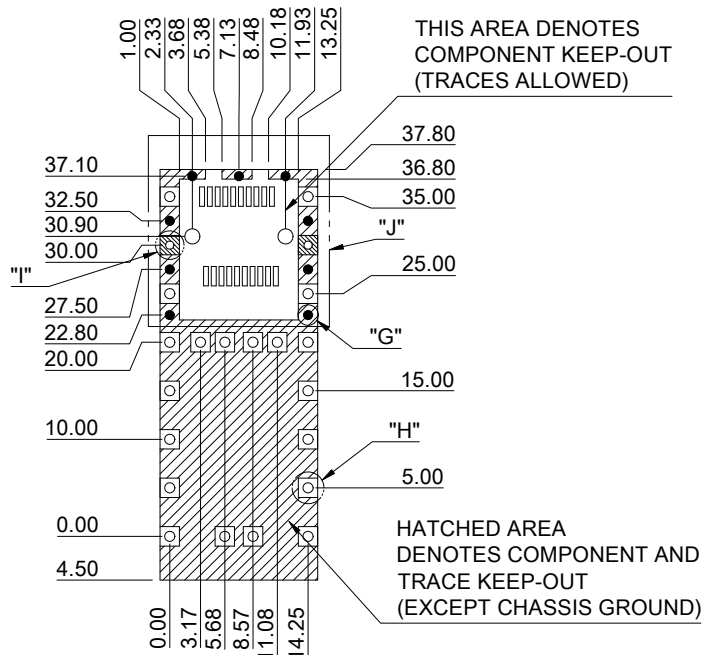
	TITLE: SFP+ Cage One-Piece Press Fit Pins w/ PCI Heat Sink			SHEET: 2/3		REV. C
	DWG#: R-SH-008020-6-K-03			CHECKED: Gary Kang		
	UNIT: mm	SCALE: A4 5:4	FINISH:	APPROVED: George Yang		
	TOLERANCE: X±0.15 .X±0.10 .XX±0.05		THIRD ANGLE PROJECTION	MATERIAL: RoHS Compliant	DATE: 07/22/2020	

TOLERANCE: Angle: ±1°  
X±0.15 .X±0.10 .XX±0.05

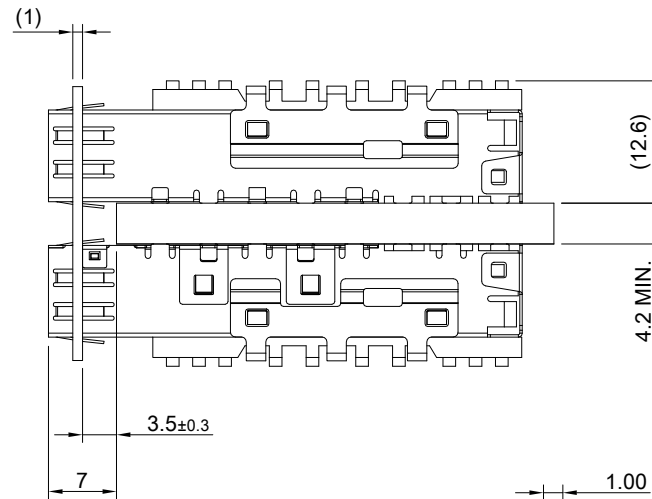
DRAWN: Jun



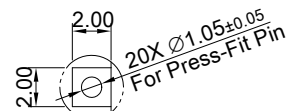
RECOMMENDED BEZEL CUT-OUT  
BELLY TO BELLY APPLICATIONS



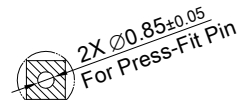
RECOMMENDED PCB LAYOUT  
FOR BELLY TO BELLY MOUNTING  
TOLERANCE:  $\pm 0.05$



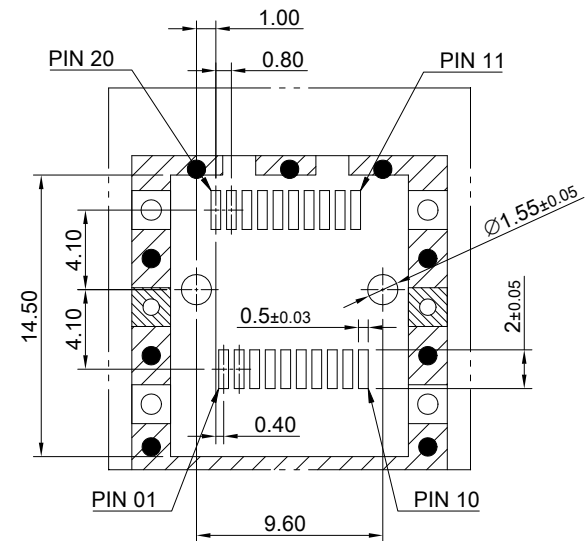
DETAIL G  
SCALE 2:1



DETAIL H  
SCALE 2:1



DETAIL I  
SCALE 2:1



DETAIL J  
SCALE 2:1



TITLE: SFP+ Cage One-Piece Press Fit Pins w/ PCI Heat Sink

DWG#: R-SH-008020-6-K-03

SHEET: 3/3  
REV. C

UNIT: mm

SCALE: A4 5:4

FINISH: CHECKED:

THIRD ANGLE PROJECTION

MATERIAL: **RoHS Compliant**  
APPROVED:

TOLERANCE: Angle:  $\pm 1^\circ$   
X:  $\pm 0.15$  .X:  $\pm 0.10$  .XX:  $\pm 0.05$

DRAWN: Jun  
DATE: 07/22/2020

*Gary Kang*  
*George Yang*