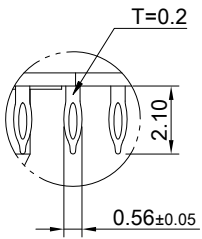
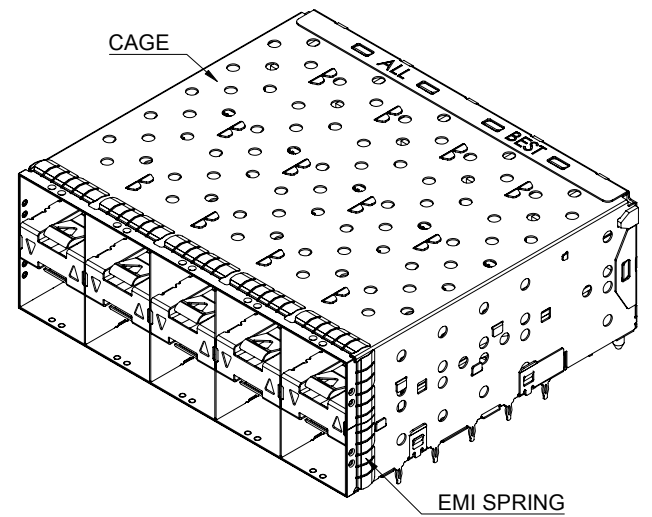


DETAIL A
SCALE 5:1



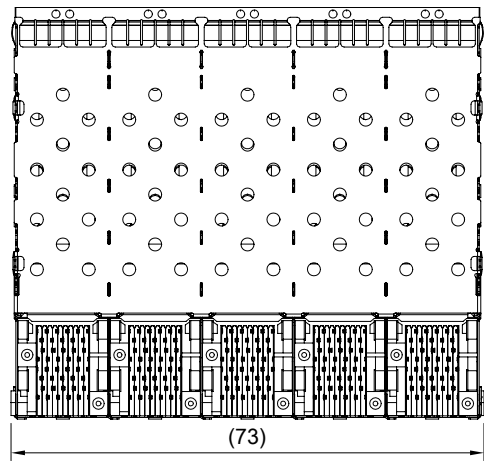
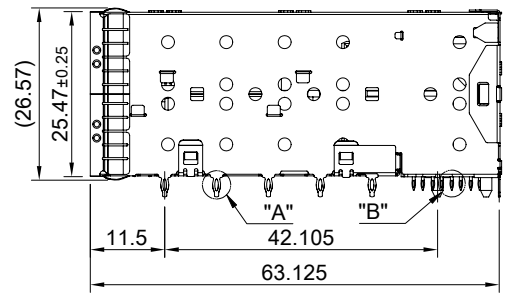
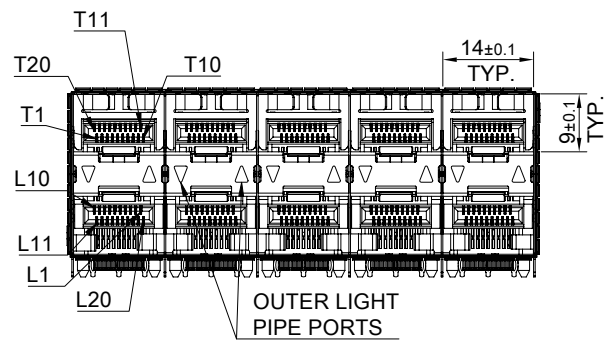
DETAIL B
SCALE 5:1



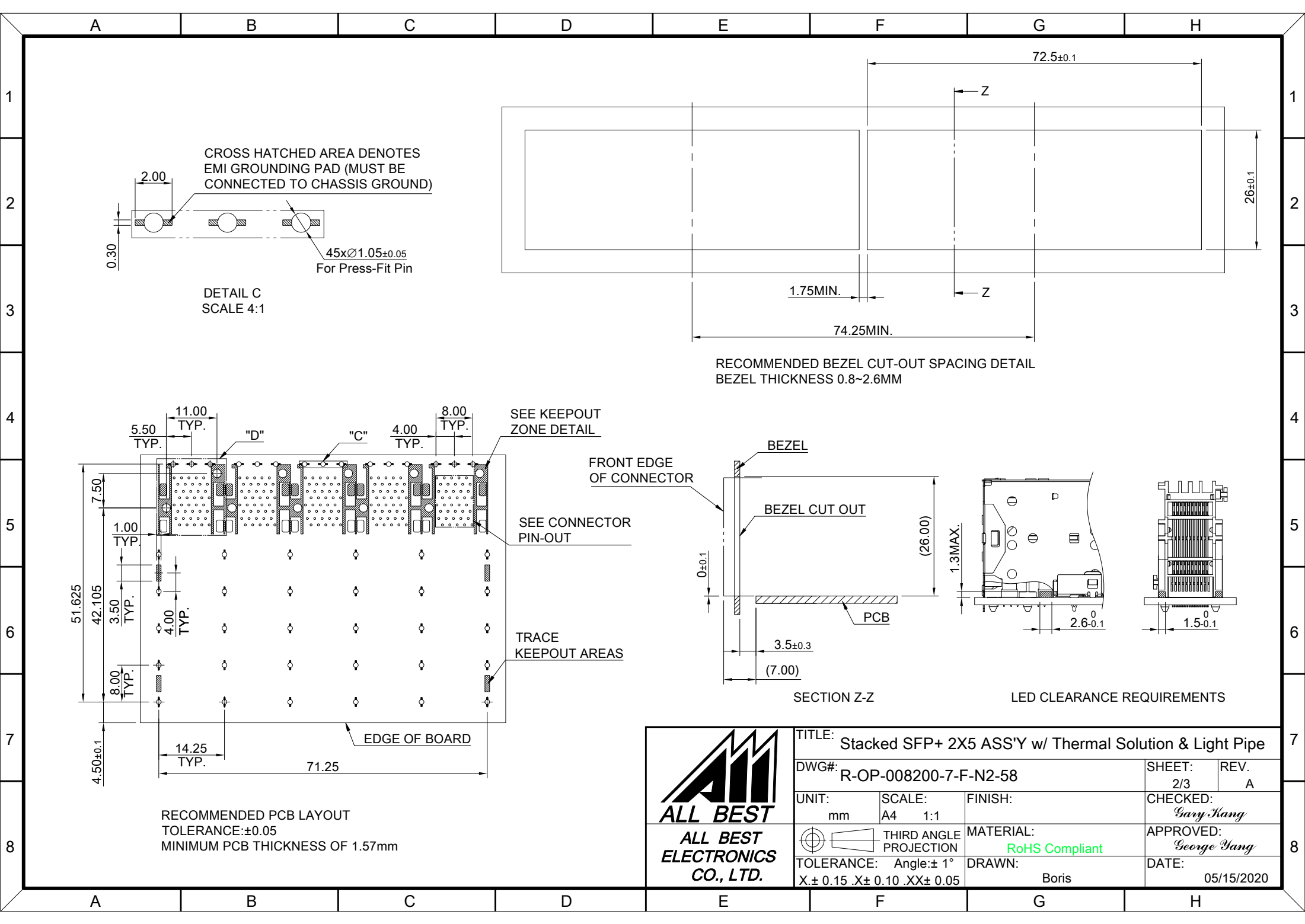
MATERIAL
 CAGE: NICKEL SILVER
 LIGHT PIPE: PC
 CONNECTOR: LCP 94V-0
 COPPER ALLOY
 EMI SPRING: STAINLESS STEEL

FINISH
 CONTACT: 15µ" MIN. GOLD ON MATING END;
 120µ" MIN. MATTE TIN ON TERMINATION END;
 ALL UNDERPLATED 50µ" MIN. NICKEL

ELECTRICAL CHARACTERISTICS
 CONTACT CURRENT RATING: 0.5 AMPERE
 VOLTAGE RATING: 30 VAC
 CONTACT RESISTANCE: 80 mΩ MAX.
 DIELECTRIC WITHSTANDING VOLTAGE: 300 VAC



	TITLE: Stacked SFP+ 2X5 ASS'Y w/ Thermal Solution & Light Pipe		
	DWG#: R-OP-008200-7-F-N2-58		SHEET: 1/3
	UNIT: mm	SCALE: A4 5:6	REV. A
	FINISH: THIRDS ANGLE PROJECTION		CHECKED: Gary Kang
TOLERANCE: Angle: ± 1°		MATERIAL: RoHS Compliant	APPROVED: George Yang
X.± 0.25 .X± 0.20 .XX± 0.15		DRAWN: Boris	DATE: 05/15/2020




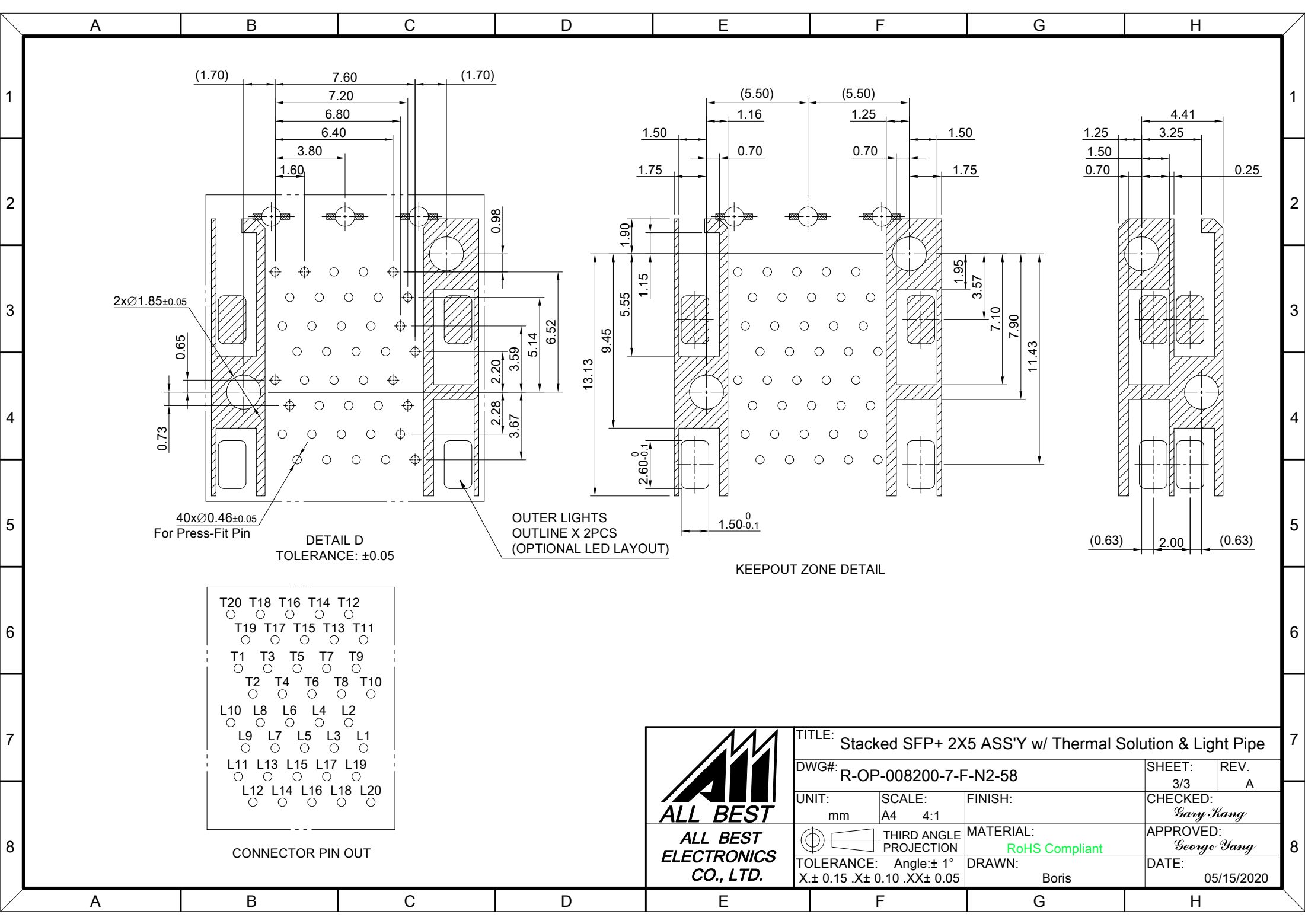
CROSS HATCHED AREA DENOTES EMI GROUNDING PAD (MUST BE CONNECTED TO CHASSIS GROUND)

DETAIL C SCALE 4:1

RECOMMENDED BEZEL CUT-OUT SPACING DETAIL
BEZEL THICKNESS 0.8~2.6MM

RECOMMENDED PCB LAYOUT
TOLERANCE:±0.05
MINIMUM PCB THICKNESS OF 1.57mm

 ALL BEST ELECTRONICS CO., LTD.	TITLE: Stacked SFP+ 2X5 ASS'Y w/ Thermal Solution & Light Pipe			SHEET: 2/3		REV. A	
	DWG#: R-OP-008200-7-F-N2-58			CHECKED: Gary Kang		APPROVED: George Yang	
	UNIT: mm	SCALE: A4 1:1	FINISH:	MATERIAL: RoHS Compliant		DATE: 05/15/2020	
	TOLERANCE: Angle:± 1° X.± 0.15 .X± 0.10 .XX± 0.05			DRAWN: Boris			
	THIRD ANGLE PROJECTION						



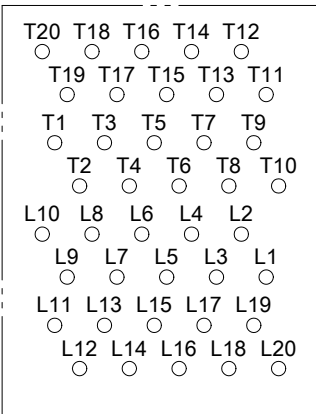
2x \varnothing 1.85 \pm 0.05

40x \varnothing 0.46 \pm 0.05
For Press-Fit Pin

DETAIL D
TOLERANCE: \pm 0.05

OUTER LIGHTS
OUTLINE X 2PCS
(OPTIONAL LED LAYOUT)

KEEPOUT ZONE DETAIL



CONNECTOR PIN OUT



TITLE: Stacked SFP+ 2X5 ASS'Y w/ Thermal Solution & Light Pipe			
DWG#: R-OP-008200-7-F-N2-58		SHEET: 3/3	REV. A
UNIT: mm	SCALE: A4 4:1	FINISH:	CHECKED: Gary Kang
THIRD ANGLE PROJECTION		MATERIAL: RoHS Compliant	APPROVED: George Yang
TOLERANCE: Angle: \pm 1° X: \pm 0.15 .X: \pm 0.10 .XX: \pm 0.05		DRAWN: Boris	DATE: 05/15/2020