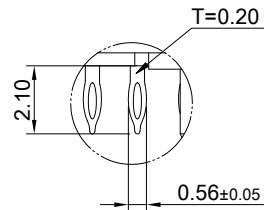
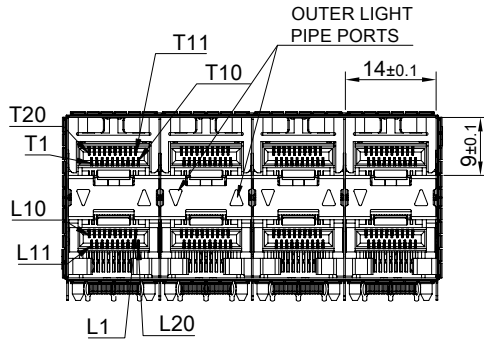
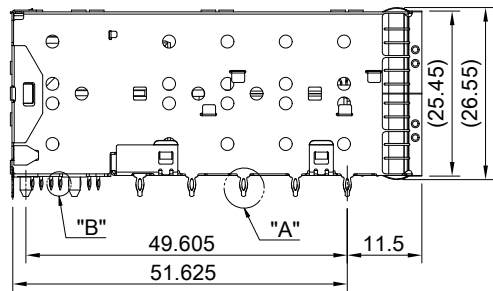
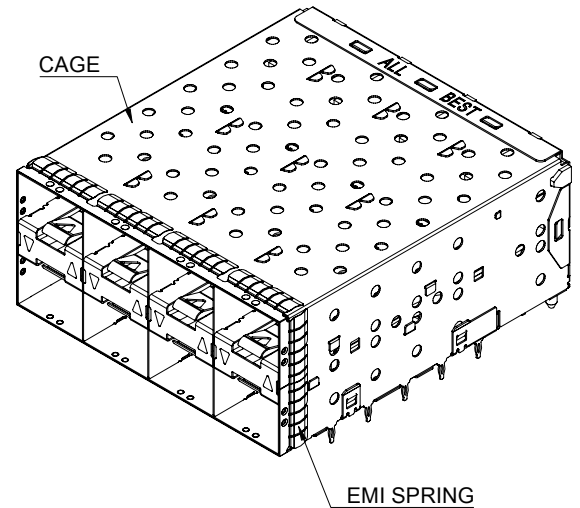


DETAIL A
SCALE 5:1



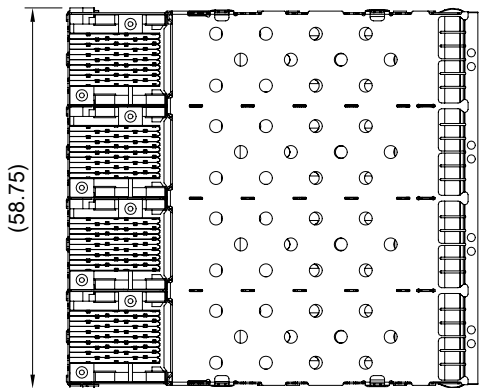
DETAIL B
SCALE 5:1



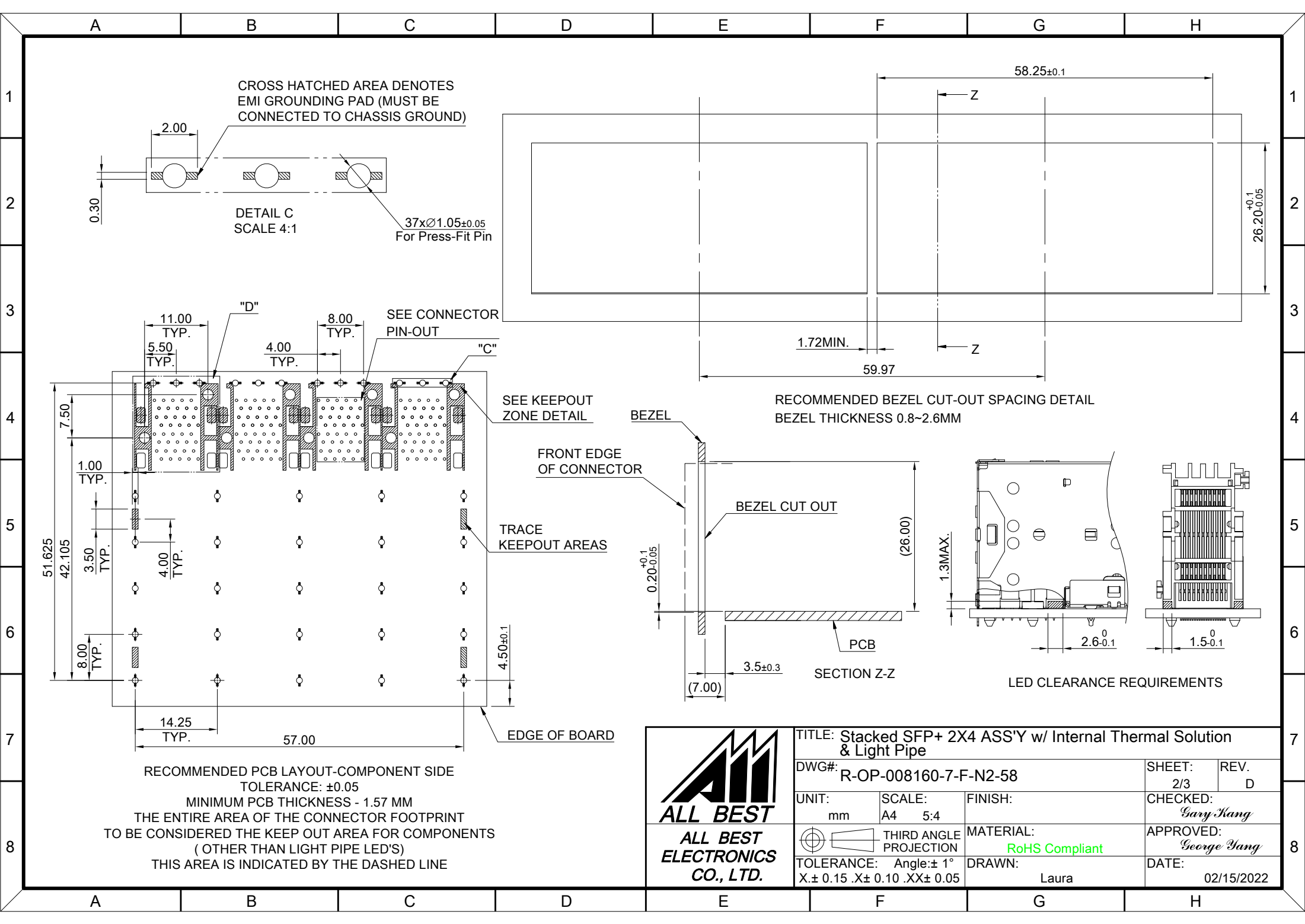
MATERIAL
 CAGE: NICKEL SILVER
 LIGHT PIPE: PC (CLEAR)
 CONNECTOR: LCP 94V-0
 COPPER ALLOY
 EMI SPRING: STAINLESS STEEL

FINISH
 CONTACT: 15μ" MIN. GOLD ON MATING END;
 30μ" MIN. MATTE TIN ON TERMINATION END;
 ALL UNDERPLATED 50μ" MIN. NICKEL

ELECTRICAL CHARACTERISTICS
 CONTACT CURRENT RATING: 0.5 AMPERE
 VOLTAGE RATING: 30 VAC
 CONTACT RESISTANCE: 80 mΩ MAX.
 DIELECTRIC WITHSTANDING VOLTAGE: 300VAC



	TITLE: Stacked SFP+ 2X4 ASS'Y w/ Internal Thermal Solution & Light Pipe		SHEET: 1/3		REV. D
	DWG#: R-OP-008160-7-F-N2-58		CHECKED: Gary Yang		APPROVED: George Yang
	UNIT: mm	SCALE: A4 1:1	FINISH:	MATERIAL: RoHS Compliant	
	TOLERANCE: X±0.25 .X±0.20 .XX±0.15		THIRD ANGLE PROJECTION	DRAWN: Laura	DATE: 02/15/2022



CROSS HATCHED AREA DENOTES EMI GROUNDING PAD (MUST BE CONNECTED TO CHASSIS GROUND)

DETAIL C SCALE 4:1

37xØ1.05±0.05 For Press-Fit Pin

RECOMMENDED BEZEL CUT-OUT SPACING DETAIL BEZEL THICKNESS 0.8~2.6MM

LED CLEARANCE REQUIREMENTS

RECOMMENDED PCB LAYOUT-COMPONENT SIDE TOLERANCE: ±0.05

MINIMUM PCB THICKNESS - 1.57 MM

THE ENTIRE AREA OF THE CONNECTOR FOOTPRINT TO BE CONSIDERED THE KEEP OUT AREA FOR COMPONENTS (OTHER THAN LIGHT PIPE LED'S)

THIS AREA IS INDICATED BY THE DASHED LINE



TITLE: Stacked SFP+ 2X4 ASS'Y w/ Internal Thermal Solution & Light Pipe

DWG#: R-OP-008160-7-F-N2-58

SHEET: 2/3 REV. D

UNIT: mm SCALE: A4 5:4 FINISH:

CHECKED: Gary Yang

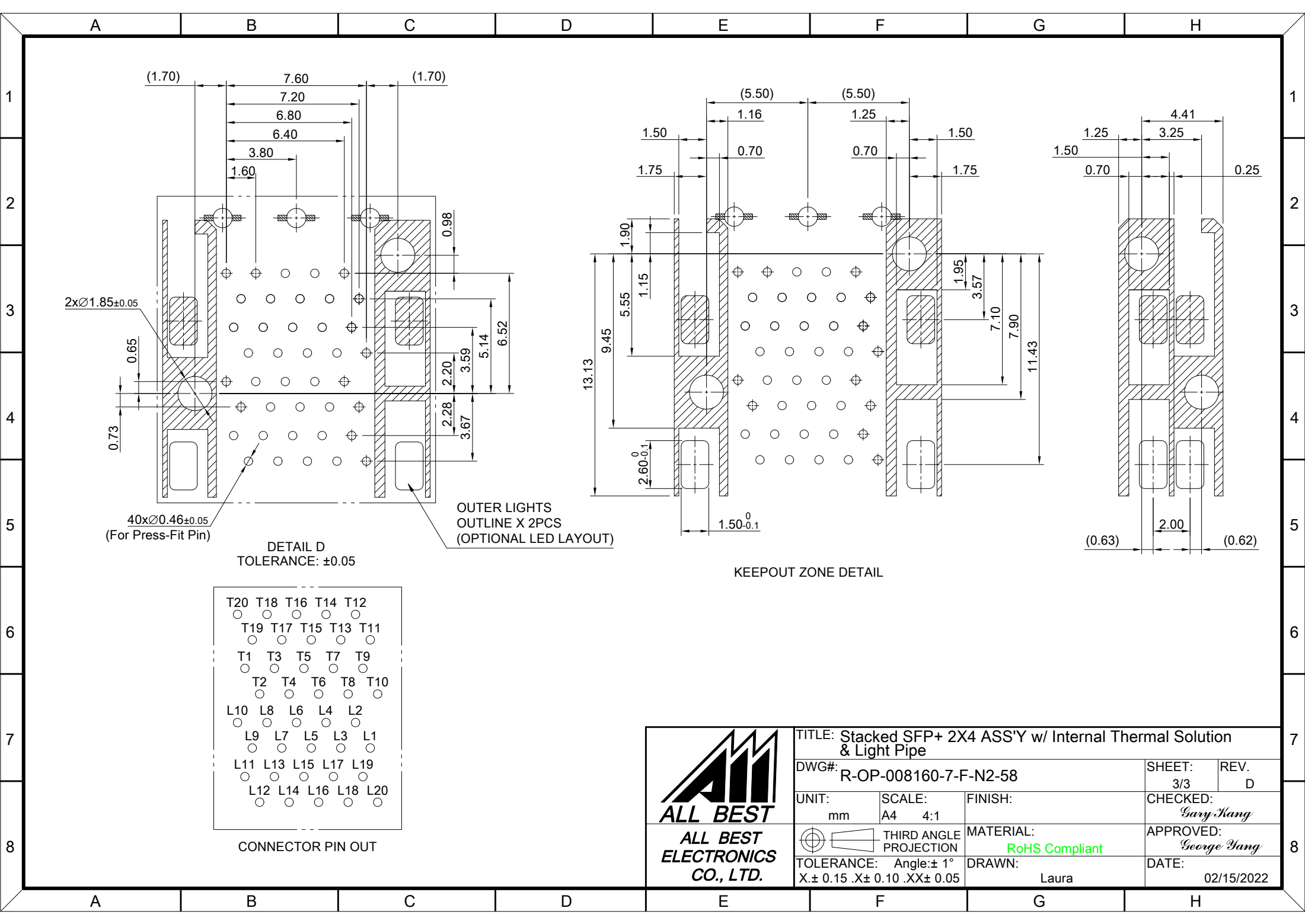
MATERIAL: RoHS Compliant

APPROVED: George Yang

TOLERANCE: X±0.15 .X±0.10 .XX±0.05

DRAWN: Laura

DATE: 02/15/2022



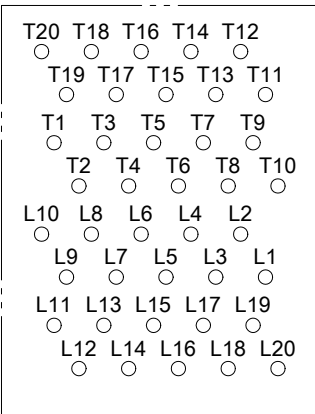
2x \varnothing 1.85 \pm 0.05

40x \varnothing 0.46 \pm 0.05
(For Press-Fit Pin)

DETAIL D
TOLERANCE: \pm 0.05

OUTER LIGHTS
OUTLINE X 2PCS
(OPTIONAL LED LAYOUT)

KEEPOUT ZONE DETAIL



CONNECTOR PIN OUT



TITLE: Stacked SFP+ 2X4 ASS'Y w/ Internal Thermal Solution & Light Pipe

DWG#: R-OP-008160-7-F-N2-58

UNIT: mm

SCALE: A4 4:1

FINISH:

SHEET: 3/3
REV. D

THIRD ANGLE PROJECTION

MATERIAL: RoHS Compliant

CHECKED: Gary Yang

APPROVED: George Yang

TOLERANCE: Angle: \pm 1°
X: \pm 0.15 .X: \pm 0.10 .XX: \pm 0.05

DRAWN: Laura

DATE: 02/15/2022