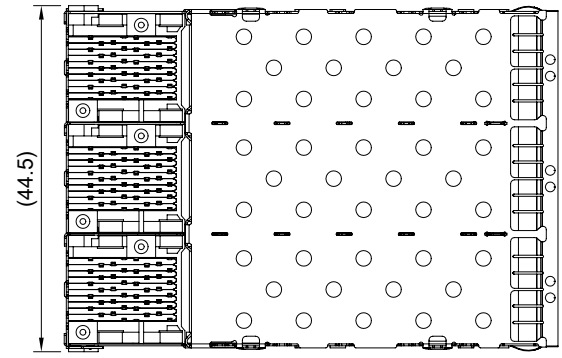


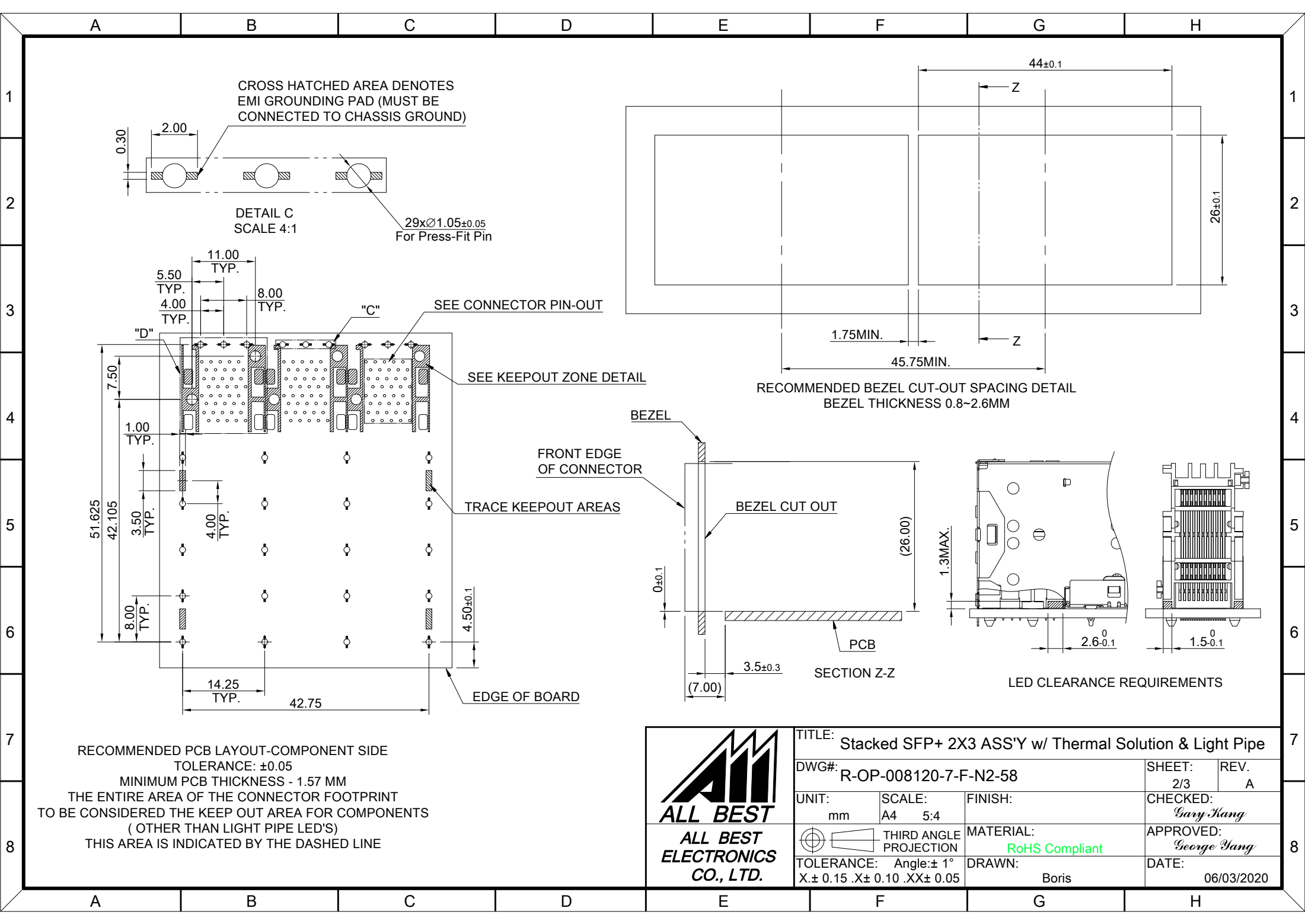
MATERIAL  
 CAGE: NICKEL SILVER  
 LIGHT PIPE: PC (CLEAR)  
 CONNECTOR: LCP 94V-0  
 COPPER ALLOY  
 EMI SPRING: STAINLESS STEEL

FINISH  
 CONTACT: 15µ" MIN. GOLD ON MATING END;  
 120µ" MIN. MATTE TIN ON TERMINATION END;  
 ALL UNDERPLATED 50µ" MIN. NICKEL

ELECTRICAL CHARACTERISTICS  
 CONTACT CURRENT RATING: 0.5 AMPERE  
 VOLTAGE RATING: 30 VAC  
 CONTACT RESISTANCE: 80 mΩ MAX.  
 DIELECTRIC WITHSTANDING VOLTAGE: 300 VAC



	TITLE: Stacked SFP+ 2X3 ASS'Y w/ Thermal Solution & Light Pipe		
	DWG#: R-OP-008120-7-F-N2-58		SHEET: 1/3
	UNIT: mm	SCALE: A4 1:1	REV. A
	THIRD ANGLE PROJECTION		CHECKED: Gary Kang
TOLERANCE: Angle: ± 1°		MATERIAL: RoHS Compliant	APPROVED: George Yang
X.± 0.25 .X± 0.20 .XX± 0.15		DRAWN: Boris	DATE: 06/03/2020



CROSS HATCHED AREA DENOTES  
EMI GROUNDING PAD (MUST BE  
CONNECTED TO CHASSIS GROUND)

DETAIL C  
SCALE 4:1

29x1.05±0.05  
For Press-Fit Pin

11.00  
TYP.  
5.50  
TYP.  
4.00  
TYP.  
8.00  
TYP.

SEE CONNECTOR PIN-OUT

SEE KEEPOUT ZONE DETAIL

FRONT EDGE  
OF CONNECTOR

TRACE KEEPOUT AREAS

EDGE OF BOARD

RECOMMENDED BEZEL CUT-OUT SPACING DETAIL  
BEZEL THICKNESS 0.8~2.6MM

SECTION Z-Z

LED CLEARANCE REQUIREMENTS

RECOMMENDED PCB LAYOUT-COMPONENT SIDE  
TOLERANCE: ±0.05  
MINIMUM PCB THICKNESS - 1.57 MM  
THE ENTIRE AREA OF THE CONNECTOR FOOTPRINT  
TO BE CONSIDERED THE KEEP OUT AREA FOR COMPONENTS  
( OTHER THAN LIGHT PIPE LED'S)  
THIS AREA IS INDICATED BY THE DASHED LINE



TITLE: Stacked SFP+ 2X3 ASS'Y w/ Thermal Solution & Light Pipe

DWG#: R-OP-008120-7-F-N2-58

SHEET: 2/3  
REV. A

UNIT: mm  
SCALE: A4 5:4

FINISH: MATERIAL: RoHS Compliant

CHECKED: Gary Kang

THIRD ANGLE PROJECTION

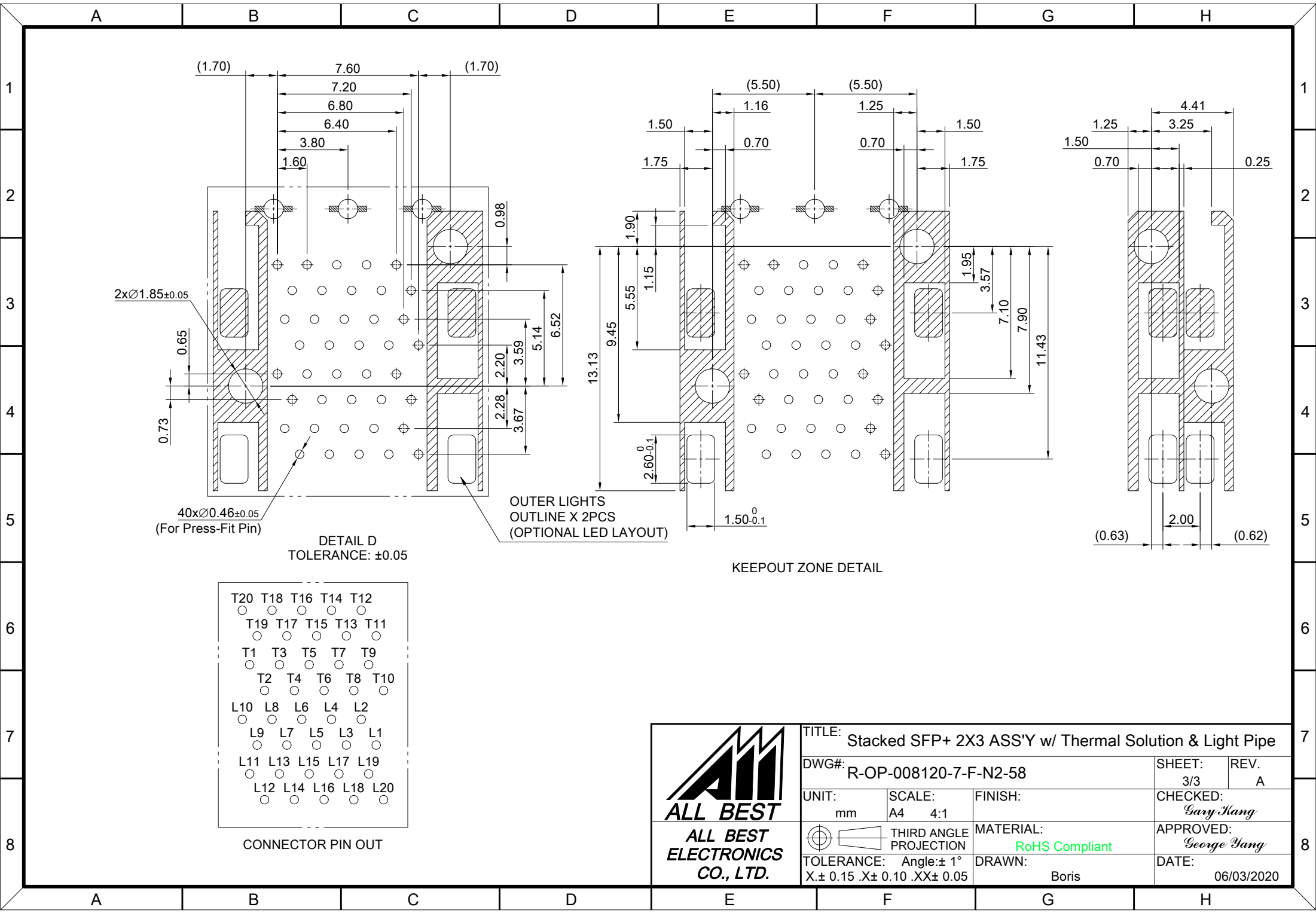
MATERIAL: RoHS Compliant

APPROVED: George Yang

TOLERANCE: Angle: ± 1°  
X: ± 0.15 .X: ± 0.10 .XX: ± 0.05

DRAWN: Boris

DATE: 06/03/2020



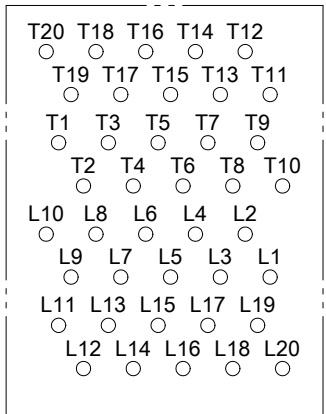
2x $\varnothing$ 1.85 $\pm$ 0.05

40x $\varnothing$ 0.46 $\pm$ 0.05  
(For Press-Fit Pin)

DETAIL D  
TOLERANCE:  $\pm$ 0.05

OUTER LIGHTS  
OUTLINE X 2PCS  
(OPTIONAL LED LAYOUT)

KEEPOUT ZONE DETAIL



CONNECTOR PIN OUT



TITLE: Stacked SFP+ 2X3 ASS'Y w/ Thermal Solution & Light Pipe			
DWG#: R-OP-008120-7-F-N2-58		SHEET: 3/3	REV. A
UNIT: mm	SCALE: A4 4:1	CHECKED: Gary Kang	
TOLERANCE: Angle: $\pm$ 1° X: $\pm$ 0.15 .X: $\pm$ 0.10 .XX: $\pm$ 0.05		MATERIAL: RoHS Compliant	APPROVED: George Yang
THIRD ANGLE PROJECTION		DRAWN: Boris	DATE: 06/03/2020