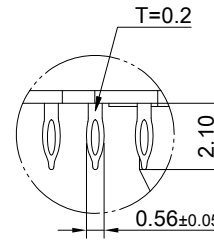
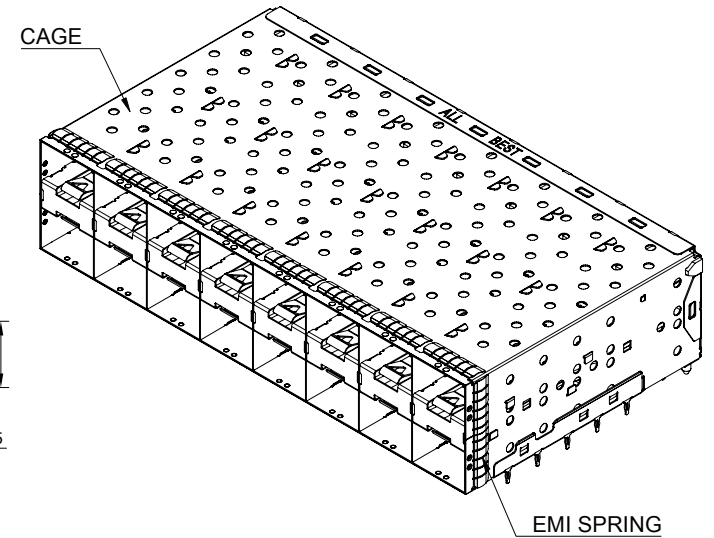


DETAIL A
SCALE 6:1



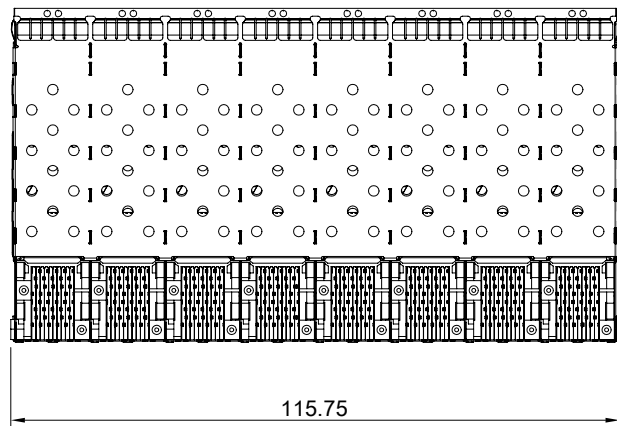
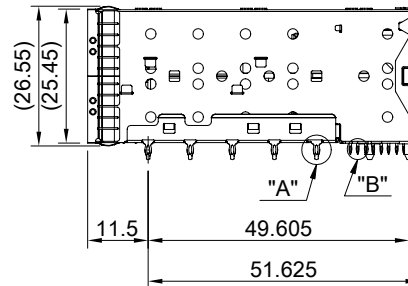
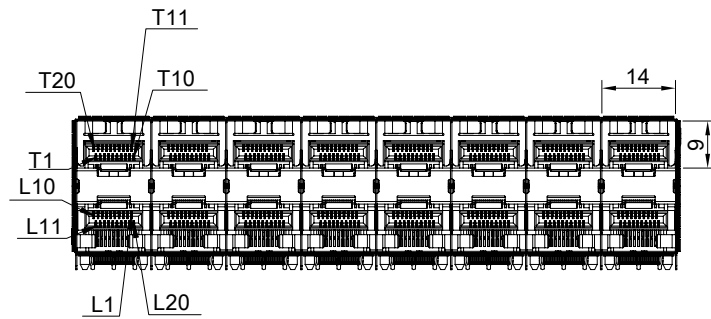
DETAIL B
SCALE 6:1



MATERIAL
CAGE: NICKEL SILVER
CONNECTOR: LCP 94V-0
COPPER ALLOY
EMI SPRING: STAINLESS STEEL

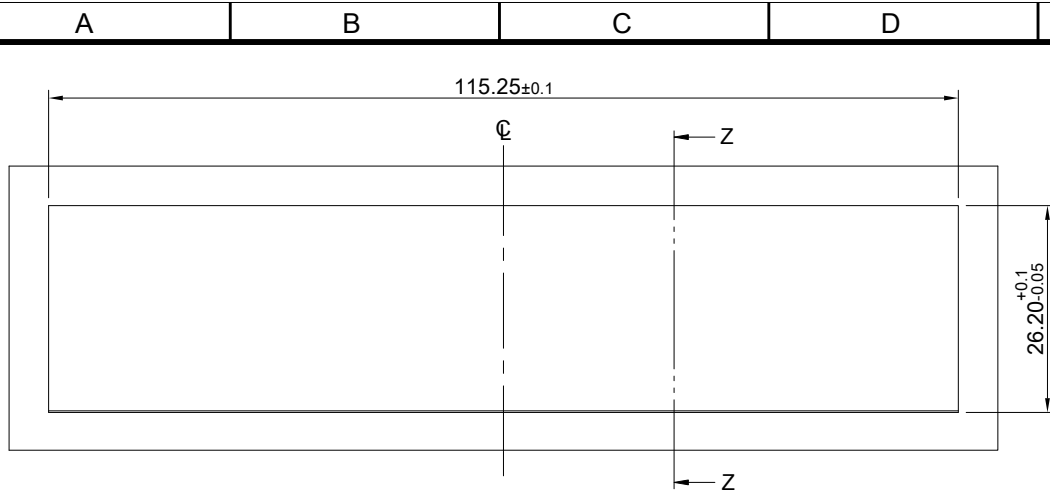
FINISH
CONTACT: 15µ" MIN. GOLD ON MATING END;
30µ" MIN. MATTE TIN ON TERMINATION END;
ALL UNDERPLATED 50µ" MIN. NICKEL

ELECTRICAL CHARACTERISTICS
CONTACT CURRENT RATING: 0.5 AMPERE
VOLTAGE RATING: 30 VAC
CONTACT RESISTANCE: 80 mΩ MAX.
DIELECTRIC WITHSTANDING VOLTAGE: 300VAC

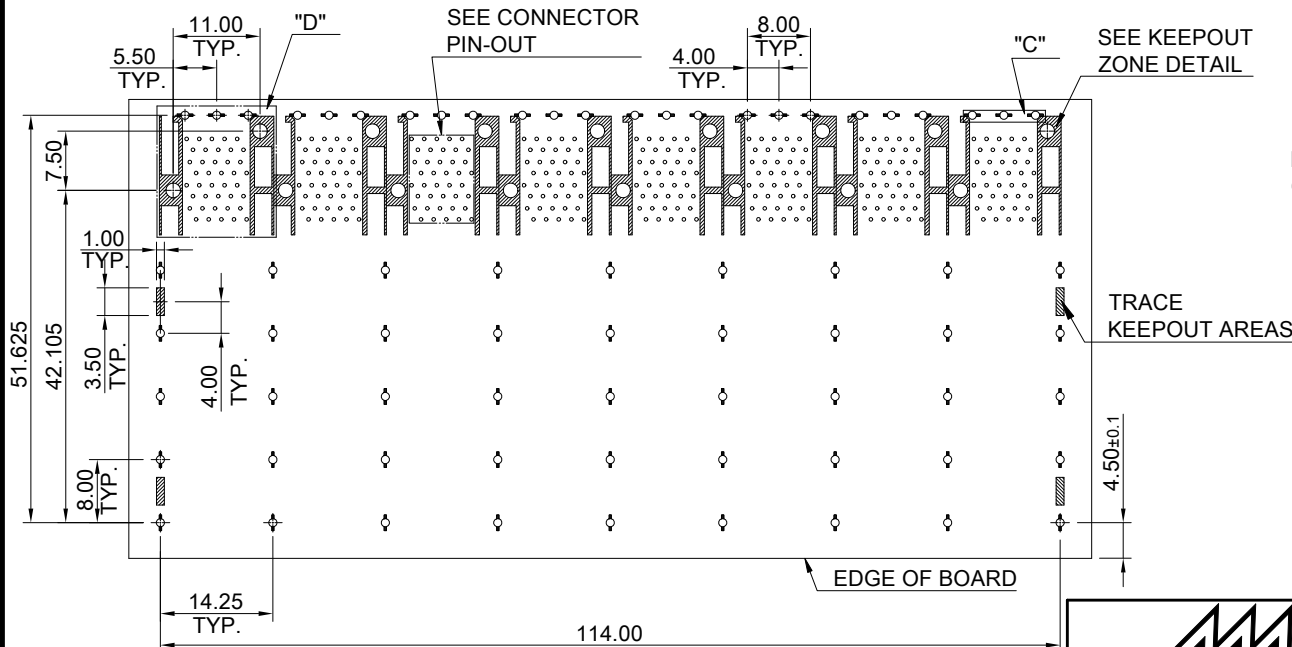
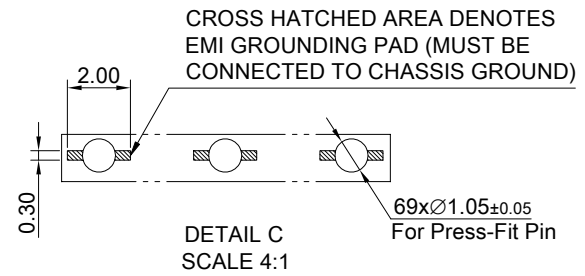


THIS PRINT IS
PRELIMINARY
UNQUALIFIED PRODUCT
CONTACT PRODUCT ENGINEERING
BEFORE USING THIS PRINT

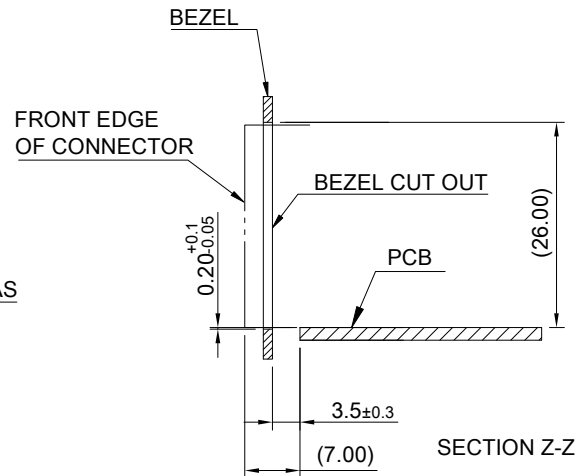
	TITLE: Stacked SFP+ 2X8 ASS'Y w/ Internal Thermal Solution		
	DWG#: R-OP-008320-6P-F-N2-26		SHEET: 1/3
	UNIT: mm	SCALE: A4 2:3	FINISH:
	TOLERANCE: Angle: ± 1° X.± 0.25 .X± 0.20 .XX± 0.15		MATERIAL: RoHS Compliant
THIRD ANGLE PROJECTION		DRAWN: Laura	DATE: 03/28/2024
APPROVED:		REF	



RECOMMENDED BEZEL CUT-OUT SPACING DETAIL
BEZEL THICKNESS 0.8-2.6MM

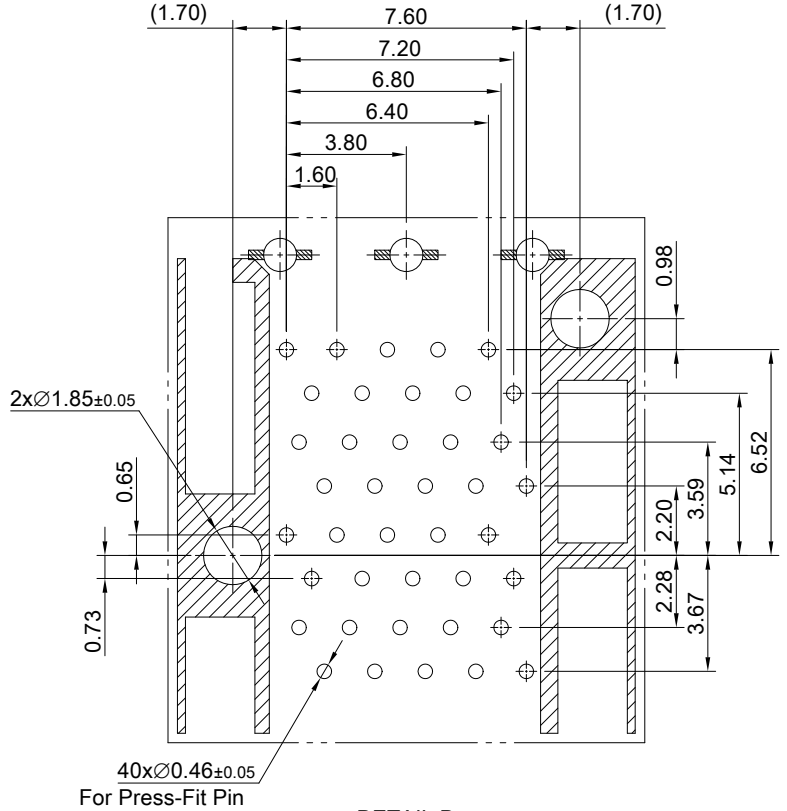
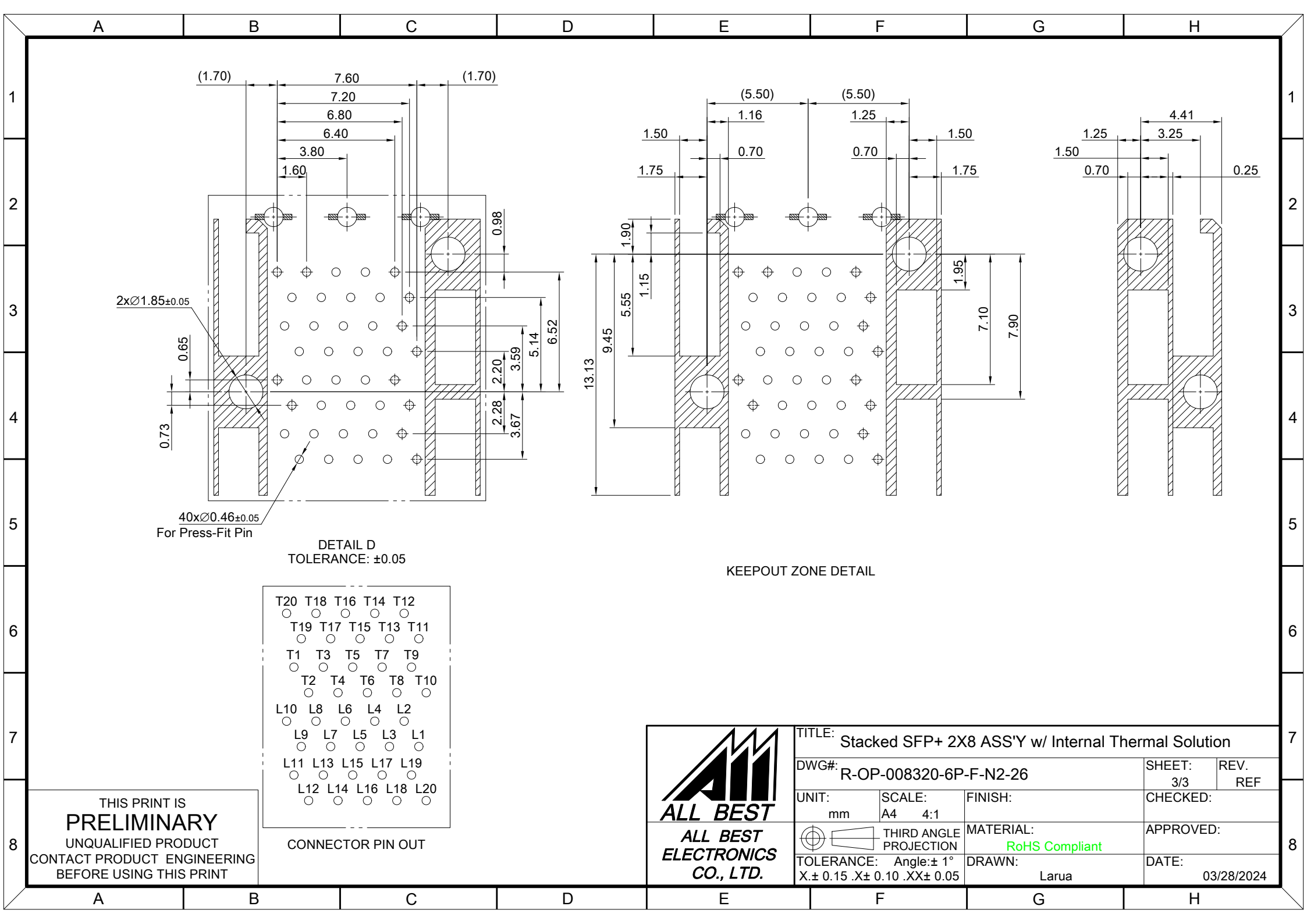


RECOMMENDED PCB LAYOUT-COMPONENT SIDE TOLERANCE: ±0.05
RECOMMENDED PCB THICKNESS- 1.57 MM
THE ENTIRE AREA OF THE KEEPOUT AREA FOR COMPONENTS (OTHER THAN LIGHT PIPE LED'S) THIS AREA IS INDICATED BY THE DASHED LINE

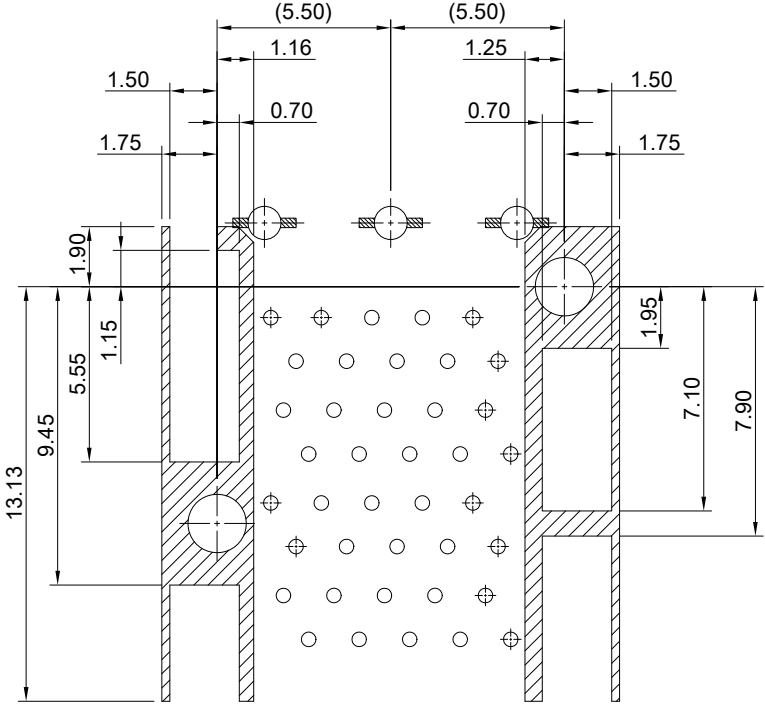


THIS PRINT IS PRELIMINARY
UNQUALIFIED PRODUCT
CONTACT PRODUCT ENGINEERING BEFORE USING THIS PRINT

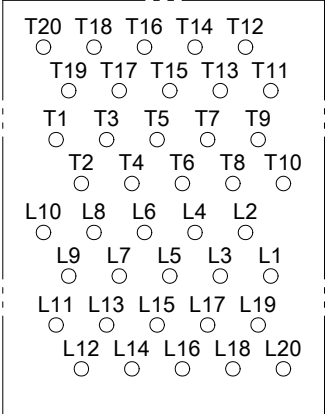
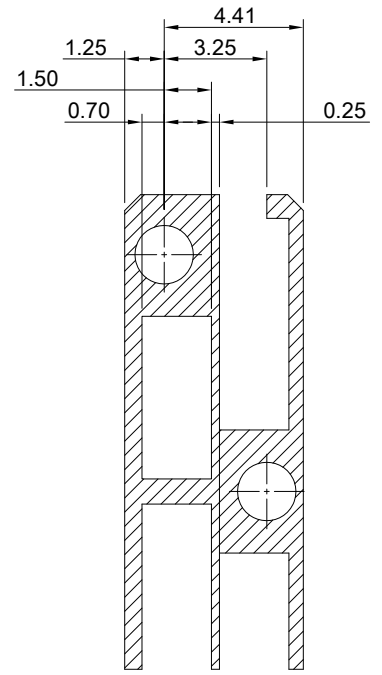
		TITLE: Stacked SFP+ 2X8 ASS'Y w/ Internal Thermal Solution	
		DWG#: R-OP-008320-6P-F-N2-26	
UNIT: mm	SCALE: A4 1:1	FINISH:	CHECKED:
TOLERANCE: Angle: ± 1° X.± 0.15 .X± 0.10 .XX± 0.05		MATERIAL: RoHS Compliant	APPROVED:
THIRD ANGLE PROJECTION		DRAWN: Laura	DATE: 03/28/2024
SHEET: 2/3		REV. REF	



DETAIL D
TOLERANCE: ± 0.05



KEEPOUT ZONE DETAIL



THIS PRINT IS
PRELIMINARY
UNQUALIFIED PRODUCT
CONTACT PRODUCT ENGINEERING
BEFORE USING THIS PRINT



TITLE: Stacked SFP+ 2X8 ASS'Y w/ Internal Thermal Solution				
DWG#: R-OP-008320-6P-F-N2-26			SHEET: 3/3	REV. REF
UNIT: mm	SCALE: A4 4:1	FINISH:		CHECKED:
TOLERANCE: Angle: $\pm 1^\circ$ X ± 0.15 .X ± 0.10 .XX ± 0.05		MATERIAL: RoHS Compliant		APPROVED:
DRAWN: Larua			DATE: 03/28/2024	