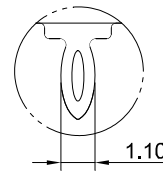
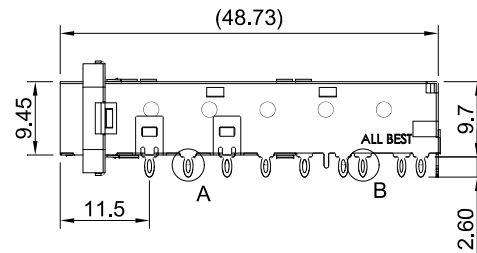
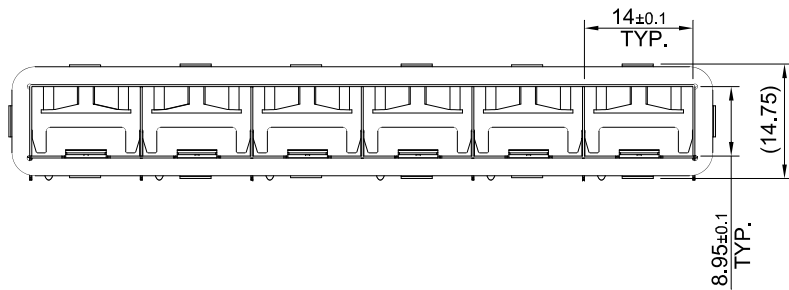


DETAIL A  
SCALE 4:1

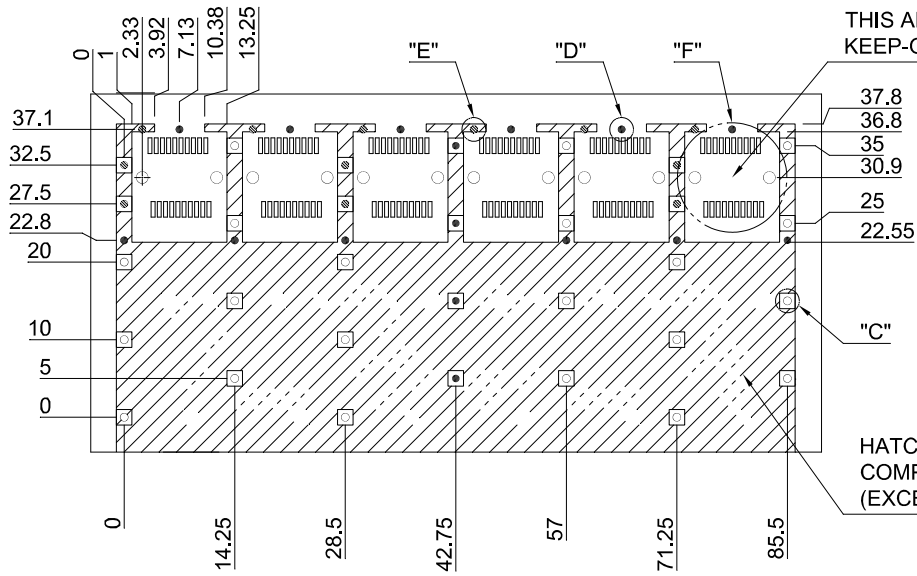


DETAIL B  
SCALE 4:1

MATERIAL  
 CAGE: NICKEL SILVER  
 EMI GASKET FLANGE: NICKEL SILVER  
 EMI GASKET: CONDUCTIVE ELASTOMER



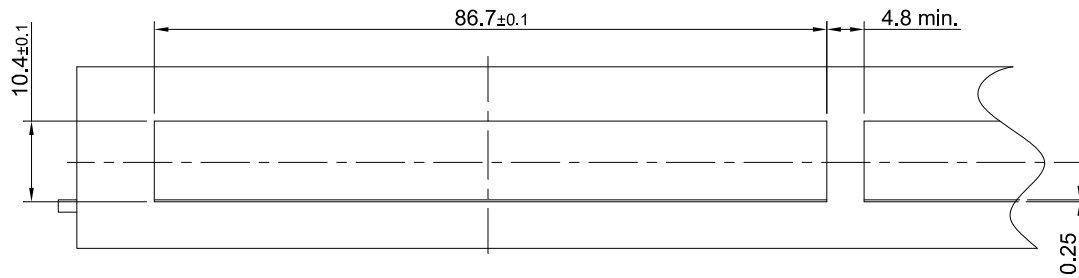
 <b>ALL BEST</b> ALL BEST ELECTRONICS CO., LTD.	TITLE: SFP+ EMI Shielded 1X6 Cage Assembly w/ Elastic Gasket		SHEET: 1/2	REV. B
	DWG#: R-SH-008120-6-F-09		CHECKED: Gary Kang	
	UNIT: mm	SCALE: A4 1:1	FINISH:	APPROVED: George Yang
	TOLERANCE: Angle: ± 1° X ± 0.25 .X ± 0.20 .XX ± 0.15		MATERIAL: RoHS Compliant	DATE: 03/07/2016
THIRD ANGLE PROJECTION		DRAWN: Ting		



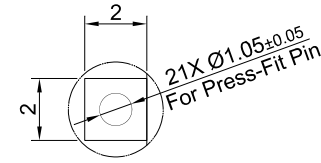
THIS AREA DENOTES COMPONENT KEEP-OUT (TRACES ALLOWED)

HATCHED AREA DENOTES COMPONENTS AND TRACE KEEP-OUT (EXCEPT CHASSIS GROUND)

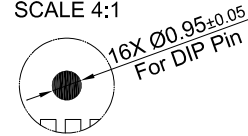
RECOMMENDED PCB LAYOUT  
TOLERANCE:  $\pm 0.05$



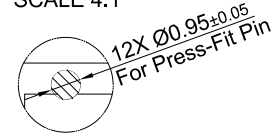
RECOMMENDED BEZEL CUT-OUT



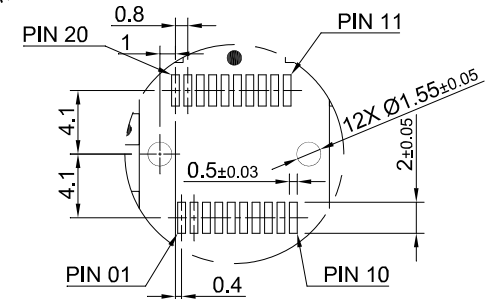
DETAIL C  
SCALE 4:1



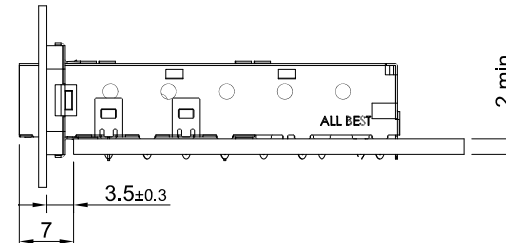
DETAIL D  
SCALE 4:1



DETAIL E  
SCALE 4:1



DETAIL F  
SCALE 2:1



TITLE: SFP+ EMI Shielded 1X6 Cage Assembly w/ Elastic Gasket

DWG#: R-SH-008120-6-F-09

SHEET: 2/2  
REV. B

UNIT: mm  
SCALE: A4 1:1

FINISH:  
CHECKED: Gary Kang

THIRD ANGLE PROJECTION

MATERIAL: RoHS Compliant  
APPROVED: George Yang

TOLERANCE: Angle:  $\pm 1^\circ$   
X:  $\pm 0.25$  .X:  $\pm 0.20$  .XX:  $\pm 0.15$

DRAWN: Ting  
DATE: 03/07/2016