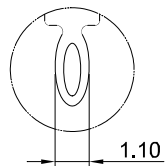
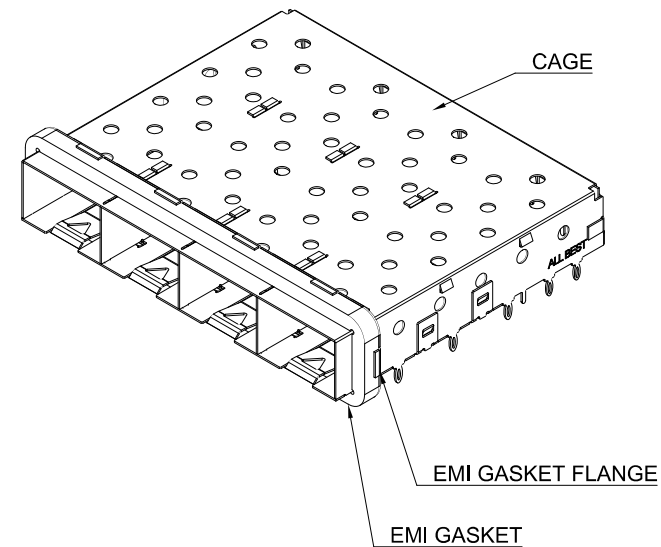


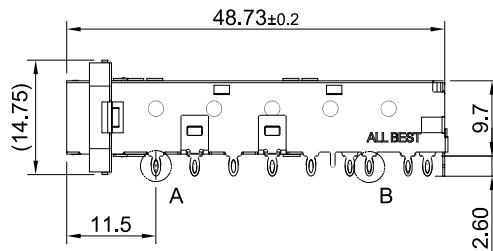
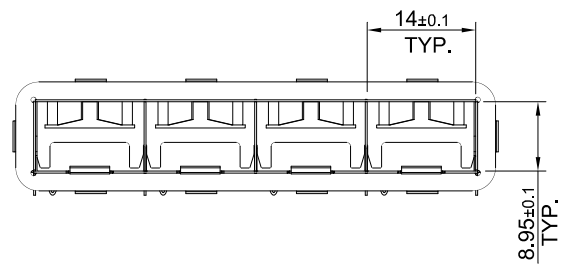
DETAIL A  
SCALE 4:1



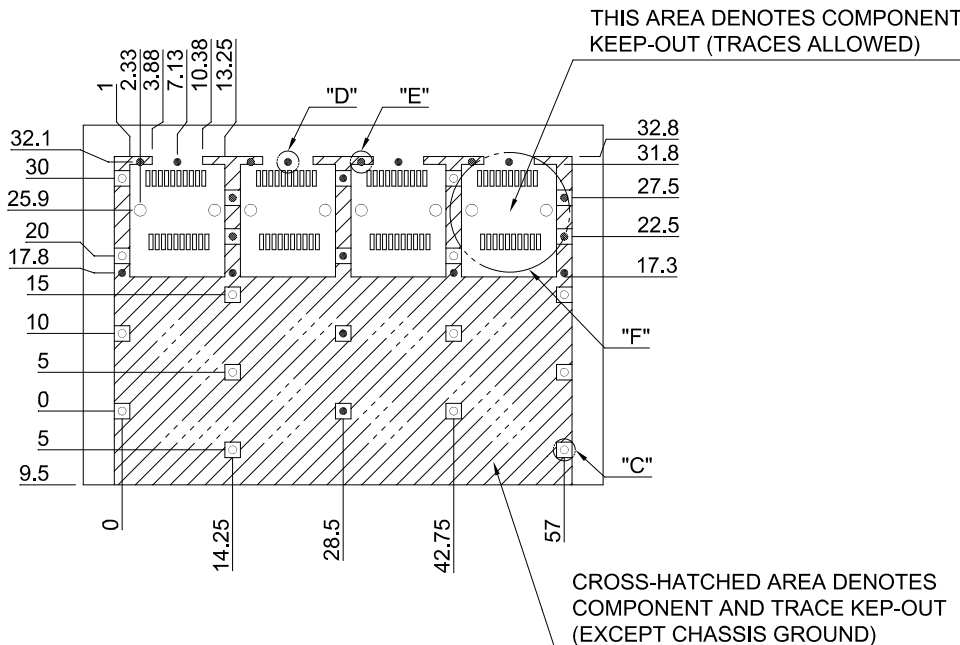
DETAIL B  
SCALE 4:1



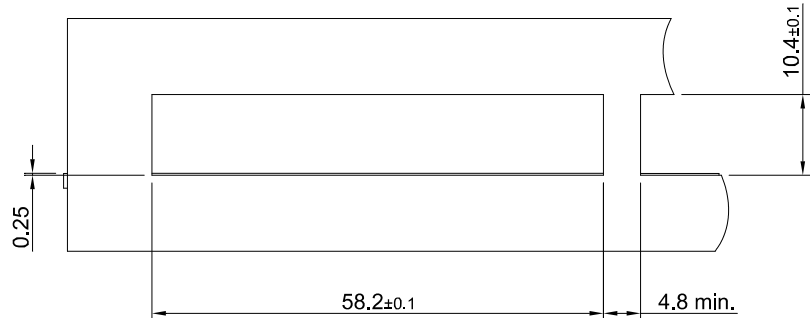
MATERIAL  
 CAGE: NICKEL SILVER  
 EMI GASKET FLANGE: NICKEL SILVER  
 EMI GASKET: CONDUCTIVE ELASTOMER



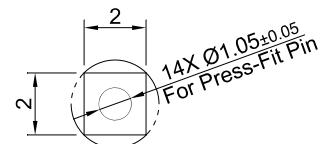
 <b>ALL BEST</b> ALL BEST ELECTRONICS CO., LTD.	TITLE: SFP+ EMI Shielded 1X4 Cage Assembly w/ Elastomeric Gasket		SHEET:	REV.
	DWG#: R-SH-008080-6-F-09		1/2	B
	UNIT: mm	SCALE: A4 1:1	FINISH:	CHECKED: <i>Gary Kang</i>
	TOLERANCE: Angle: ± 1° X ± 0.25 .X ± 0.20 .XX ± 0.15		MATERIAL: RoHS Compliant	APPROVED: <i>George Yang</i>
THIRD ANGLE PROJECTION		DRAWN: Ting	DATE: 02/22/2016	



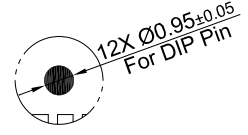
RECOMMENDED PCB LAYOUT  
TOLERANCE:  $\pm 0.05$



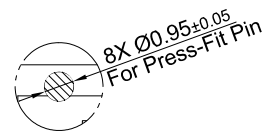
RECOMMENDED BEZEL CUT-OUT



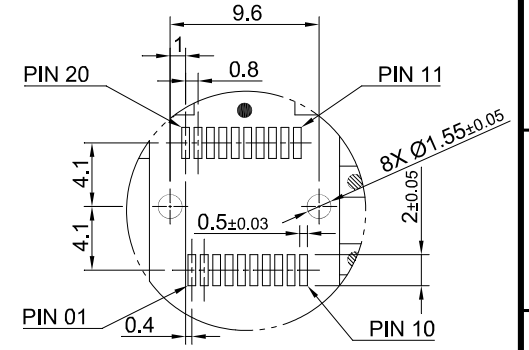
DETAIL C  
SCALE 4:1



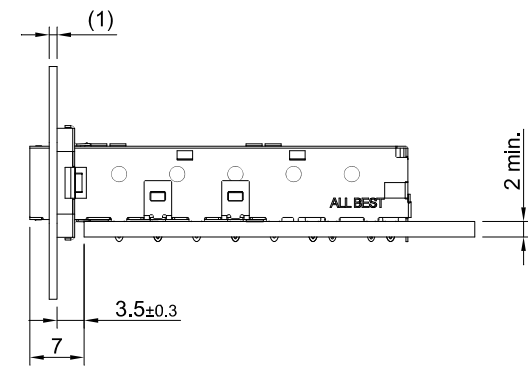
DETAIL D  
SCALE 4:1



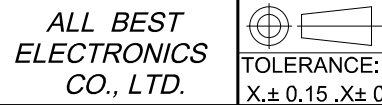
DETAIL E  
SCALE 4:1



DETAIL F  
SCALE 2:1



	TITLE: SFP+ EMI Shielded 1X4 Cage Assembly w/ Elastomeric Gasket		SHEET: 2/2	REV. B
	DWG#: R-SH-008080-6-F-09		CHECKED: Gary Kang	
	UNIT: mm	SCALE: A4 1:1	FINISH:	APPROVED: George Yang
	TOLERANCE: Angle: $\pm 1^\circ$ $X \pm 0.15$ . $X \pm 0.10$ . $XX \pm 0.05$		MATERIAL: RoHS Compliant	DATE: 02/19/2016



THIRD ANGLE  
PROJECTION

MATERIAL: RoHS Compliant  
DRAWN: Ting