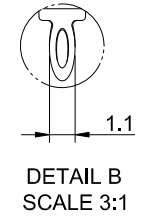
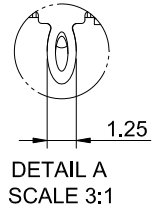
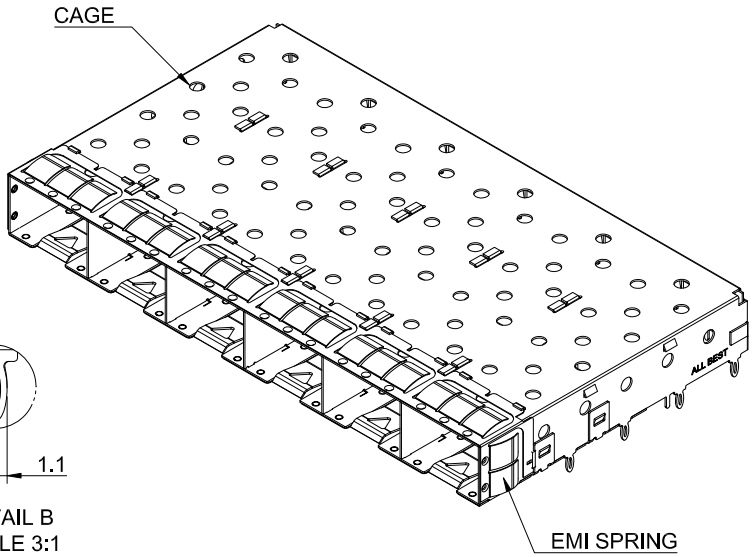
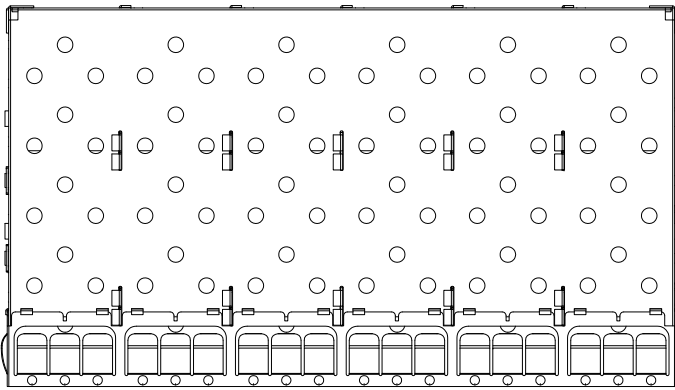
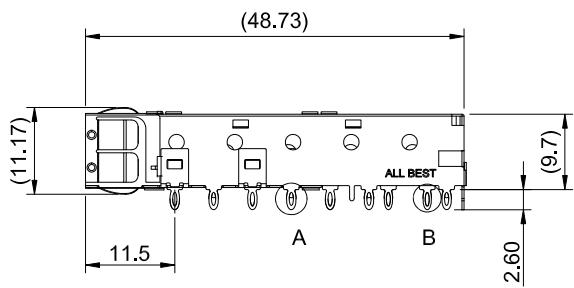
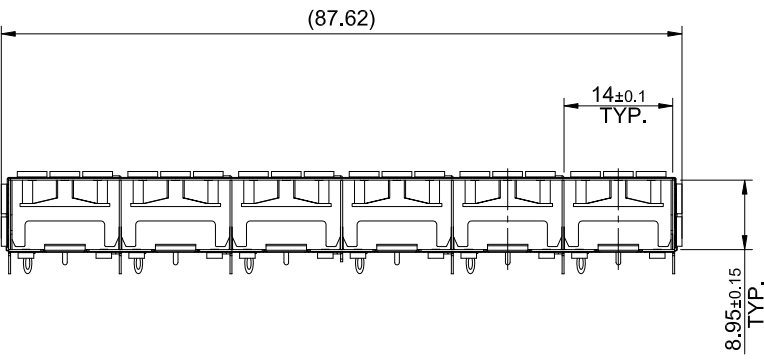


A B C D E F G H

1
2
3
4
5
6
7
8

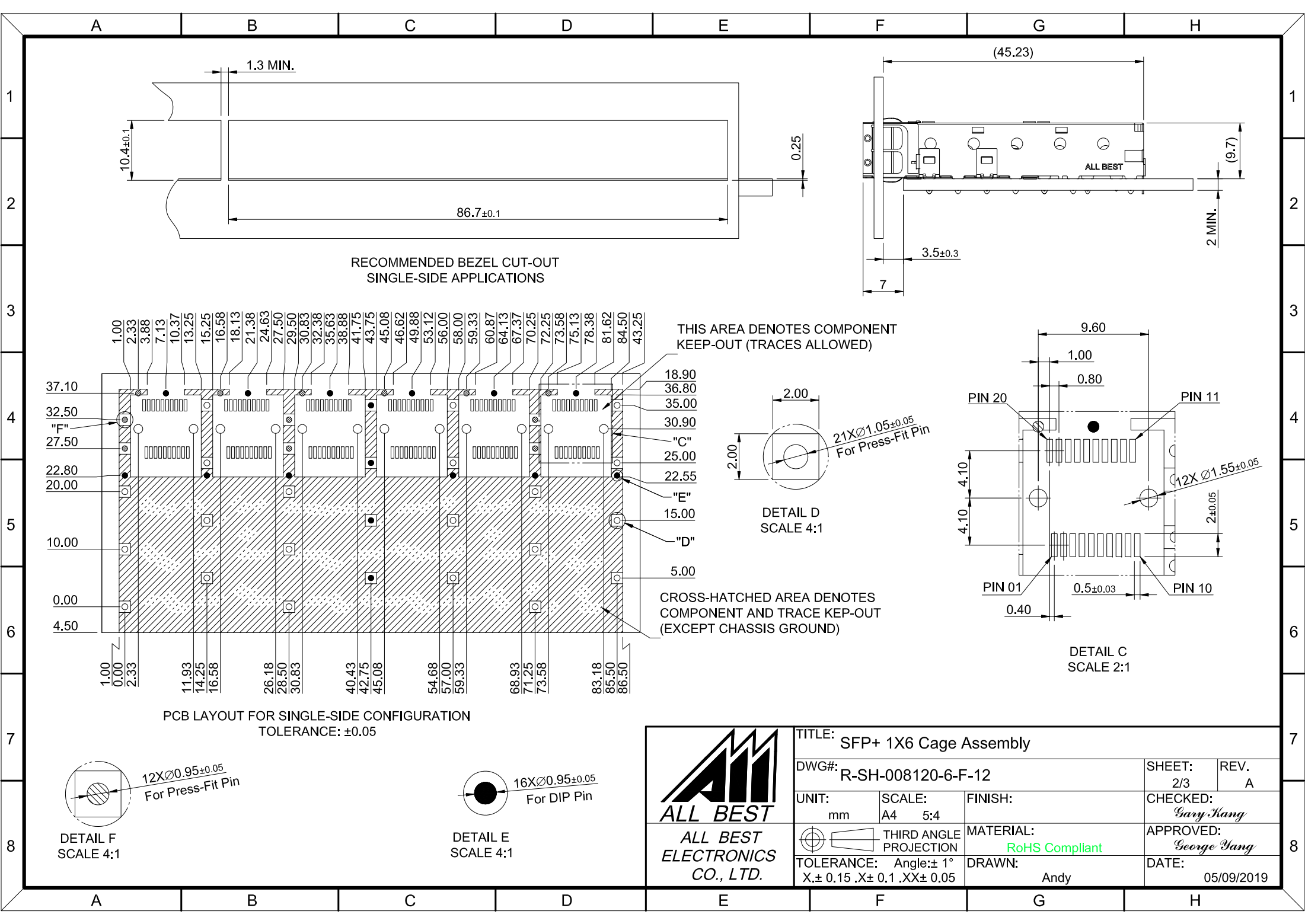


MATERIAL
CAGE: NICKEL SILVER
EMI SPRING: STAINLESS STEEL

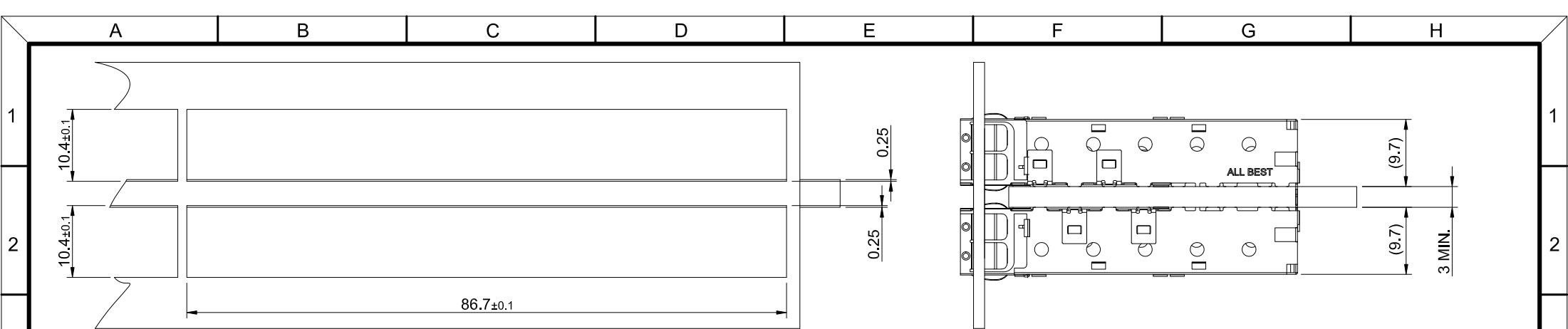


TITLE: SFP+ 1X6 Cage Assembly		SHEET: 1/3	REV. A
DWG#: R-SH-008120-6-F-12		CHECKED: Gary Kang	
UNIT: mm	SCALE: A4 1:1	APPROVED: George Yang	
THIRD ANGLE PROJECTION		DATE: 05/06/2019	
TOLERANCE: Angle: ± 1° X.± 0.25 .X± 0.20 .XX± 0.15		DRAWN: Andy	

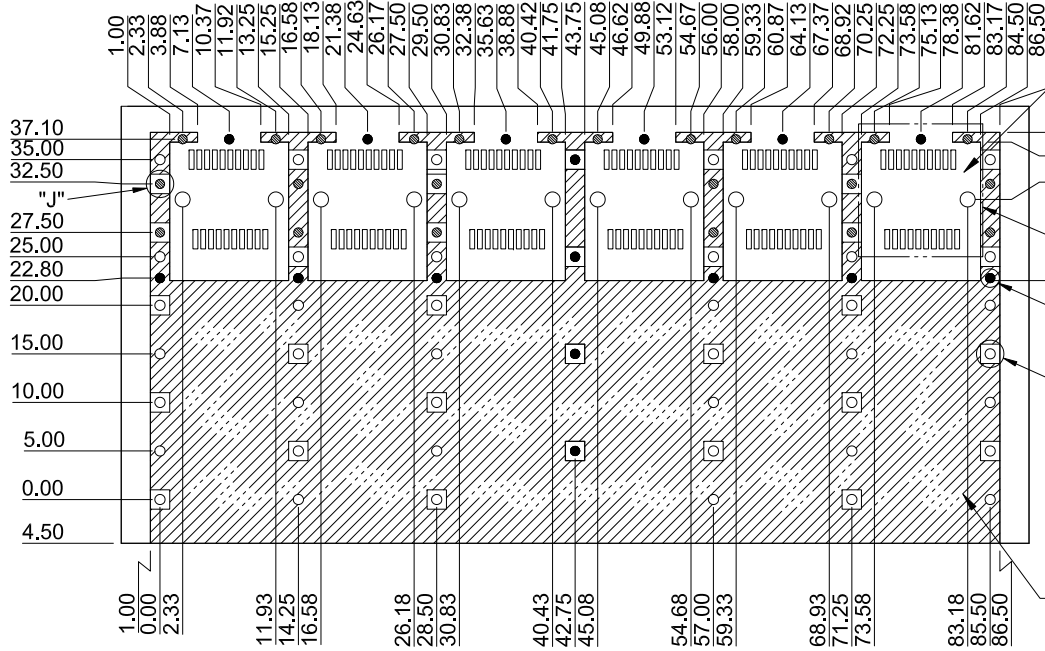
A B C D E F G H



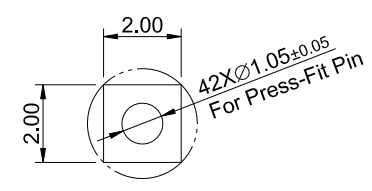
TITLE: SFP+ 1X6 Cage Assembly		SHEET: 2/3	REV. A
DWG#: R-SH-008120-6-F-12		CHECKED: Gary Kang	
UNIT: mm	SCALE: A4 5:4	APPROVED: George Yang	
FINISH:		DATE: 05/09/2019	
THIRD ANGLE PROJECTION		MATERIAL: RoHS Compliant	
TOLERANCE: Angle: ±1° X.± 0.15 .X± 0.1 .XX± 0.05		DRAWN: Andy	



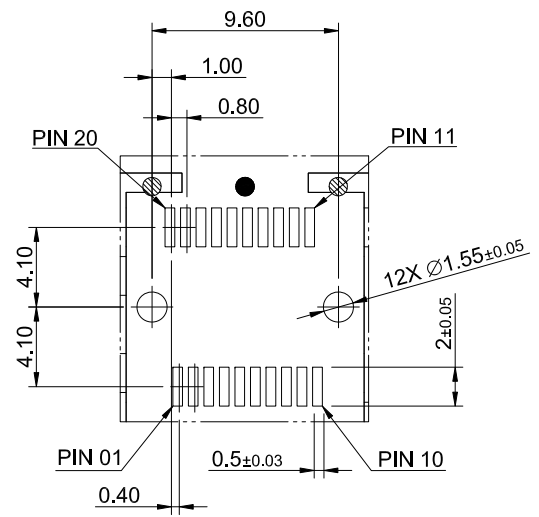
RECOMMENDED BEZEL CUT-OUT
SINGLE-SIDE APPLICATIONS



THIS AREA DENOTES COMPONENT
KEEP-OUT (TRACES ALLOWED)



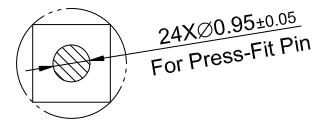
DETAIL F
SCALE 4:1



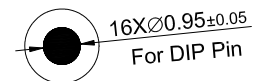
DETAIL G
SCALE 2:1

CROSS-HATCHED AREA DENOTES
COMPONENT AND TRACE KEEP-OUT
(EXCEPT CHASSIS GROUND)

PCB LAYOUT FOR SINGLE-SIDE CONFIGURATION
TOLERANCE: ±0.05



DETAIL J
SCALE 4:1



DETAIL I
SCALE 4:1

	TITLE: SFP+ 1X6 Cage Assembly		SHEET: 3/3		REV. A
	DWG#: R-SH-008120-6-F-12		CHECKED: Gary Kang		APPROVED: George Yang
	UNIT: mm	SCALE: A4 5:4	FINISH:	MATERIAL: RoHS Compliant	
	TOLERANCE: Angle: ±1° X.± 0.15 .X± 0.1 .XX± 0.05		DRAWN: Andy	DATE: 05/09/2019	