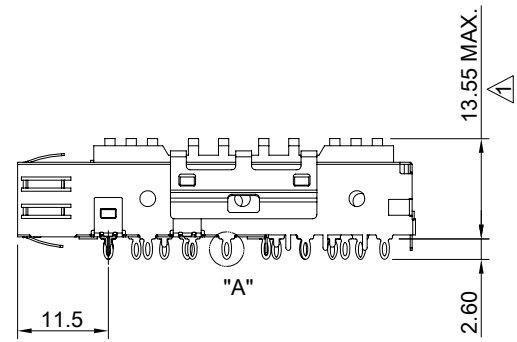
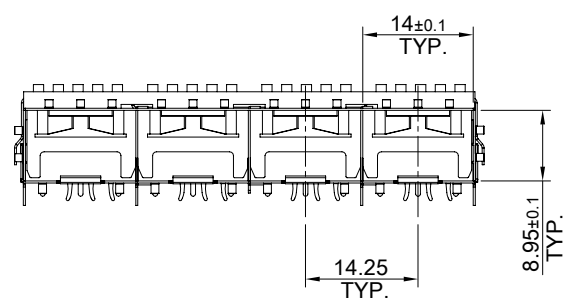


DETAIL A  
SCALE 2:1

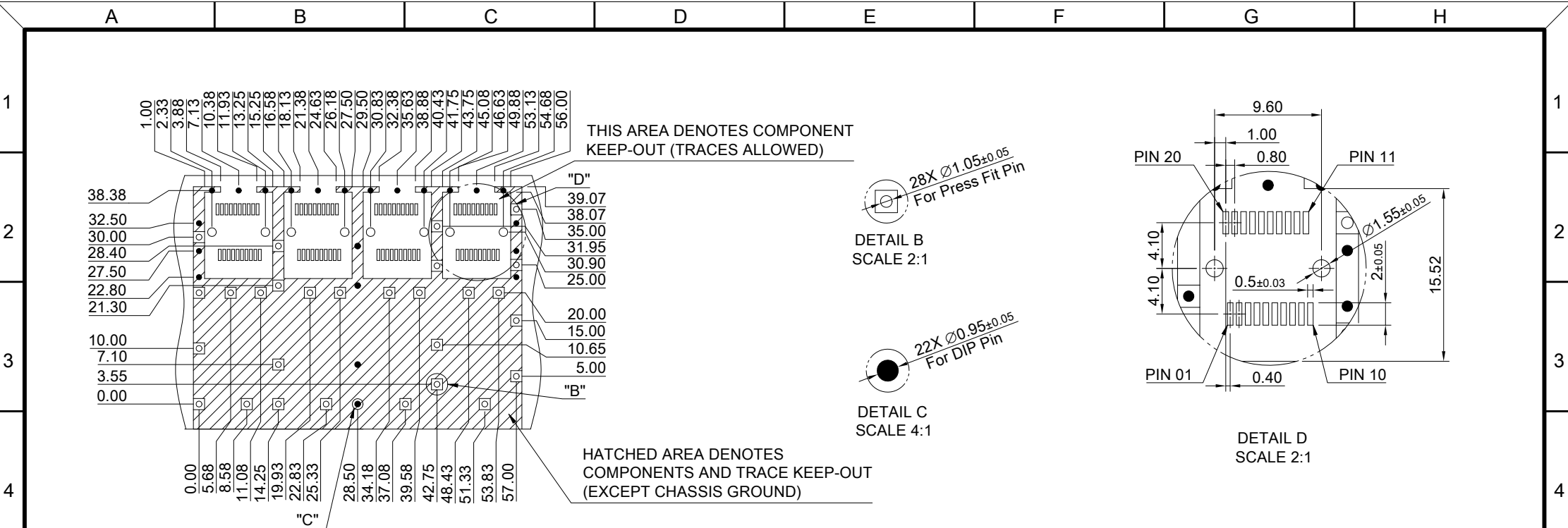


MATERIAL  
 CAGE: NICKEL SILVER  
 HEAT SINK: ALUMINUM  
 HEAT SINK CLIP: STAINLESS STEEL

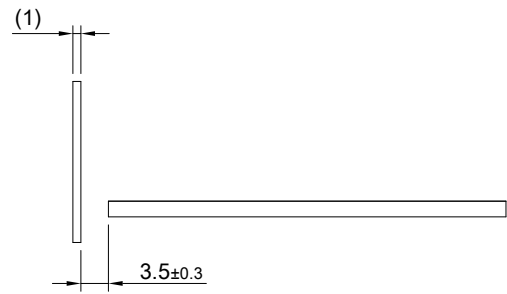
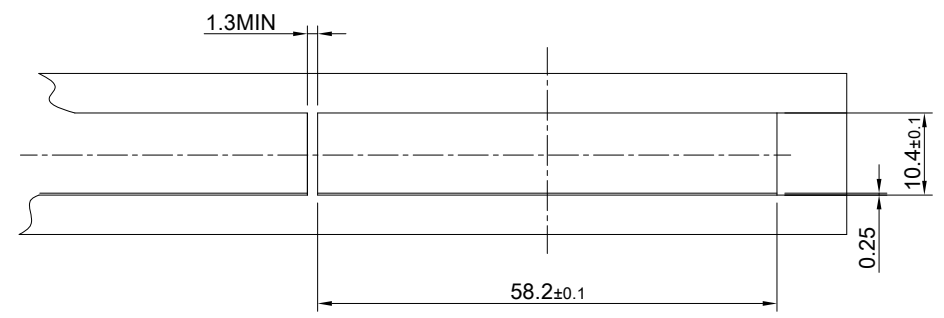
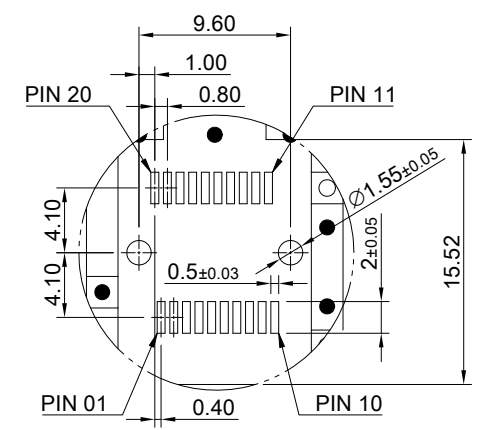
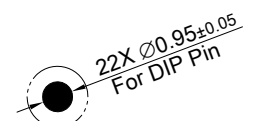
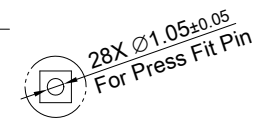
FINISH  
 HEAT SINK: ANODE PROCESS

NOTE  
 ▲ DIMENSION APPLIES WITH MODULE INSERTED IN CAGE

 <b>ALL BEST</b> <b>ELECTRONICS</b> <b>CO., LTD.</b>	TITLE: SFP+ 1X4 Cage Assembly w/ PCI Heat Sink		SHEET: 1/2	REV. B
	DWG#: R-SH-008080-6-K-03		CHECKED: Gary Kang	
	UNIT: mm	SCALE: A4 1:1	FINISH:	APPROVED: George Yang
	THIRD ANGLE PROJECTION TOLERANCE: Angle: ± 1° X ± 0.25 .X ± 0.20 .XX ± 0.15		MATERIAL: RoHS Compliant	DATE: 08/19/2019
		DRAWN: Jun		



RECOMMENDED PCB LAYOUT  
TOLERANCE: ±0.05



	TITLE: SFP+ 1X4 Cage Assembly w/ PCI Heat Sink		
	DWG#: R-SH-008080-6-K-03		SHEET: 2/2
	UNIT: mm	SCALE: A4 1:1	FINISH:
	TOLERANCE: Angle: ±1° X ± 0.15 .X ± 0.10 .XX ± 0.05		MATERIAL: RoHS Compliant
THIRD ANGLE PROJECTION		DRAWN: Jun	APPROVED: George Yang
DATE: 08/19/2019			