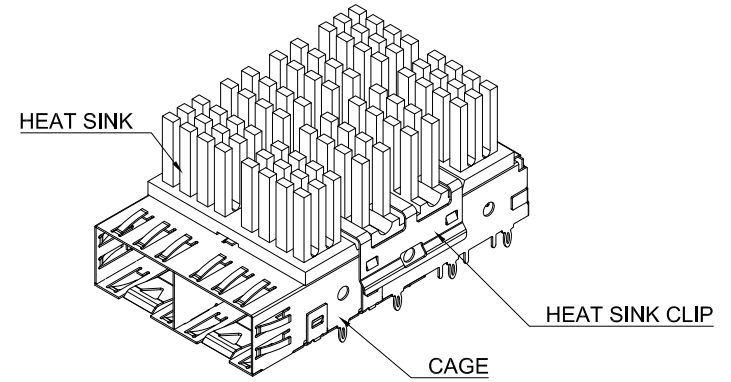
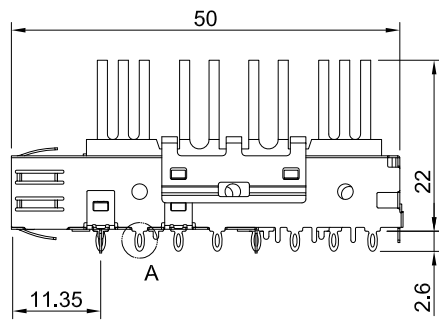
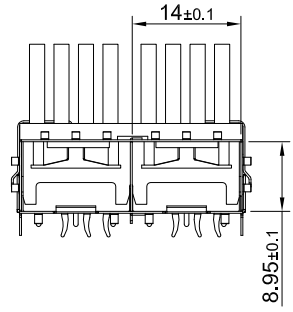



DETAIL A  
SCALE 4:1

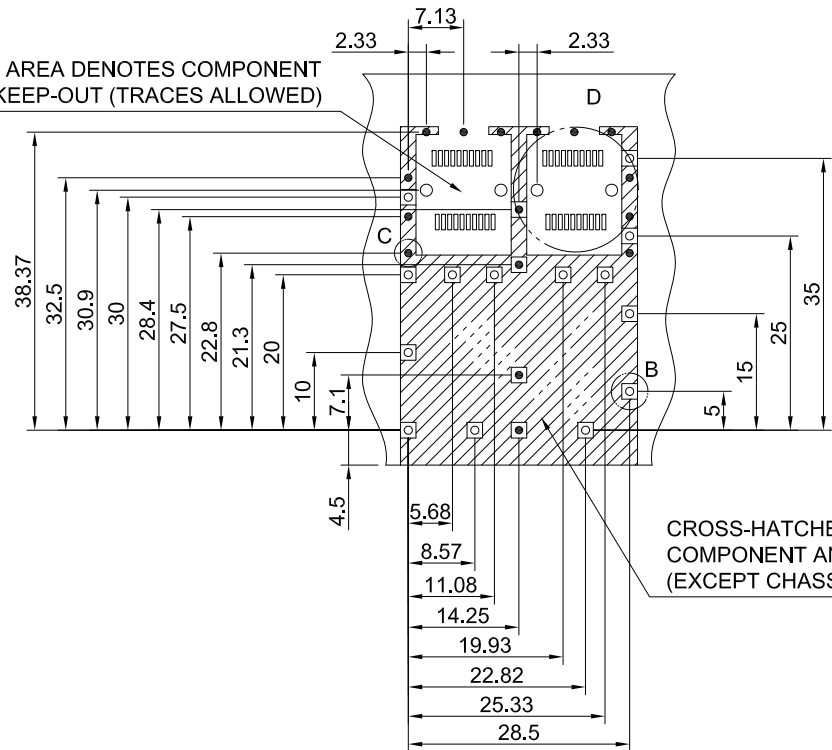


MATERIAL  
 CAGE: NICKEL SILVER  
 HEAT SINK: ALUMINUM  
 HEAT SINK CLIP: STAINLESS STEEL

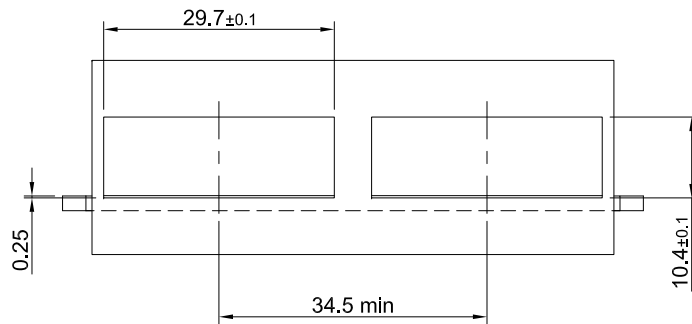
FINISH  
 HEAT SINK: ANODE PROCESS

 <b>ALL BEST</b> ALL BEST ELECTRONICS CO., LTD.	TITLE: SFP+ 1X2 Cage Assembly w/ NET Heat Sink			SHEET:	REV.
	DWG#: R-SH-008040-6-K-01			1/2	A
	UNIT: mm	SCALE: A4 1:1	FINISH:	CHECKED: <i>Gary Kang</i>	
	TOLERANCE: Angle: ± 1° X, ± 0.25 .X ± 0.20 .XX ± 0.15		MATERIAL: RoHS Compliant	APPROVED: <i>George Yang</i>	
THIRD ANGLE PROJECTION			DRAWN: Ting	DATE: 11/20/2014	

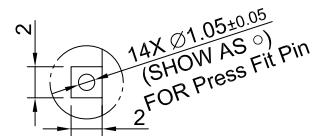
THIS AREA DENOTES COMPONENT  
KEEP-OUT (TRACES ALLOWED)



RECOMMENDED PCB LAYOUT  
TOLERANCE:  $\pm 0.05$



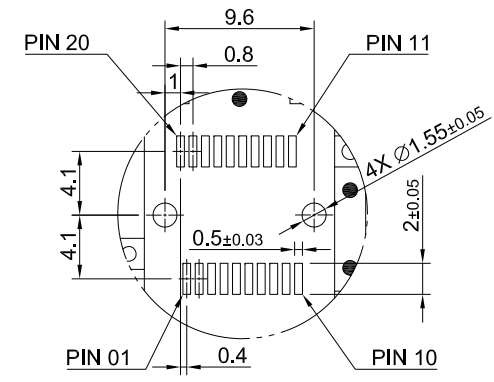
RECOMMENDED BEZEL CUT-OUT



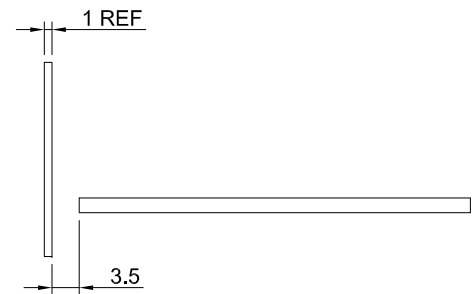
DETAIL B  
SCALE 2:1



DETAIL C  
SCALE 2:1



DETAIL D  
SCALE 2:1



	TITLE: SFP+ 1X2 Cage Assembly w/ NET Heat Sink		
	DWG#: R-SH-008040-6-K-01		SHEET: 2/2
	UNIT: mm	SCALE: A4 1:1	REV. A
	THIRD ANGLE PROJECTION		CHECKED: Gary Kang
TOLERANCE: Angle: $\pm 1^\circ$		MATERIAL: RoHS Compliant	APPROVED: George Yang
X, $\pm 0.15$ .X $\pm 0.10$ .XX $\pm 0.05$		DRAWN: Ting	DATE: 11/20/2014