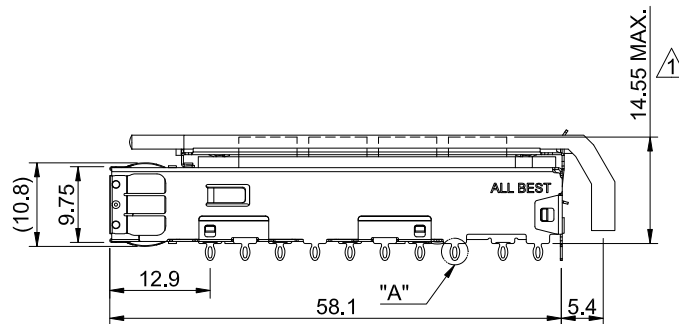
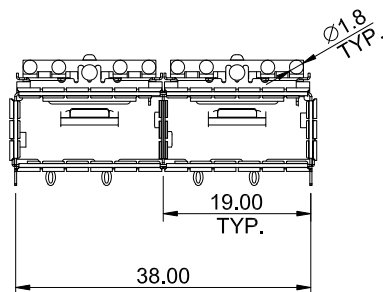
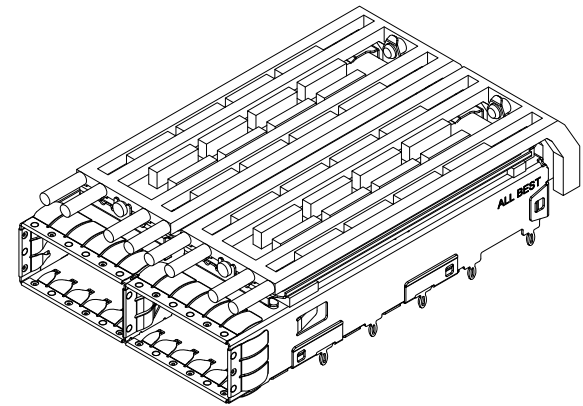



DETAIL A  
SCALE 5:1

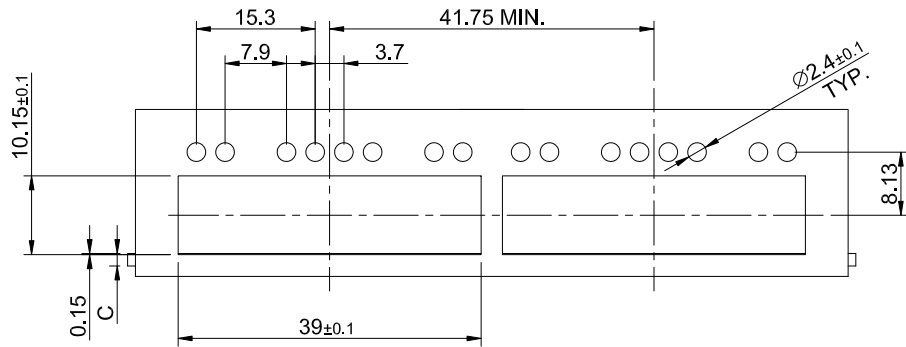


MATERIAL  
 CAGE: NICKEL SILVER  
 HEAT SINK: ALUMINUM  
 HEAT SINK CLIP: STAINLESS STEEL  
 EMI SPRING: STAINLESS STEEL  
 LIGHT PIPE: PC

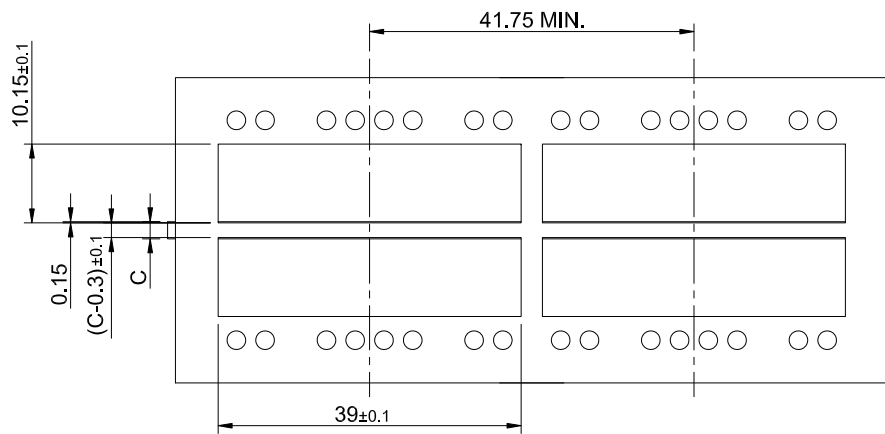
FINISH  
 HEAT SINK: ANODE PROCESS

NOTE  
 ▲ DIMENSION APPLIES WITH MODULE INSERTED IN CAGE

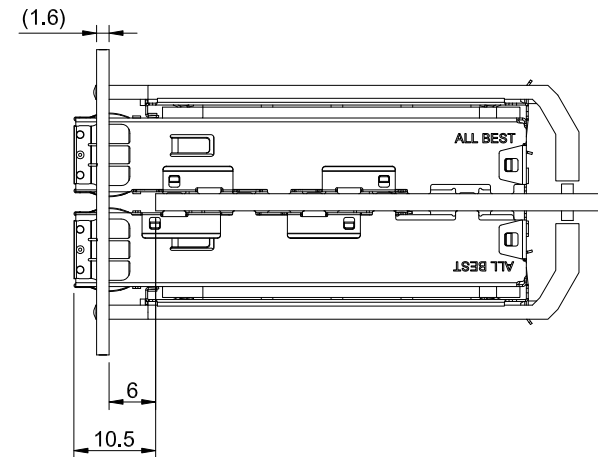
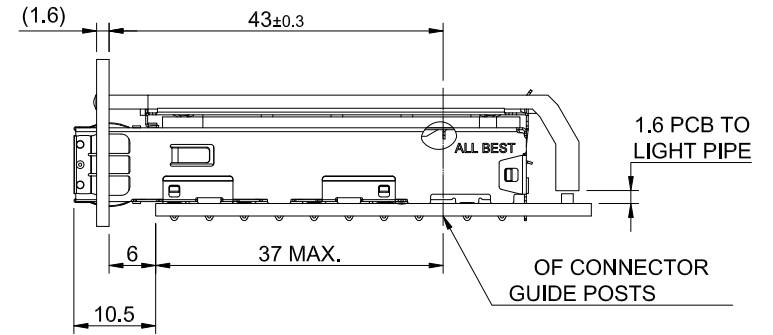
	TITLE: QSFP+ 1X2 Cage Assembly w/ Light Pipe & Heat Sink			SHEET: 1/4		REV. A	
	DWG#: R-OR-Q2-4CMEG			CHECKED: Gary Kang		APPROVED: George Yang	
	UNIT: mm	SCALE: A4 1:1	FINISH:	MATERIAL: RoHS Compliant		DATE: 08/30/2017	
	TOLERANCE: X± 0.25 .X± 0.20 .XX± 0.15		THIRD ANGLE PROJECTION	DRAWN: Boris			



SINGLE-SIDE CONFIGURATION



BELLY TO BELLY CONFIGURATION



C = THICKNESS OF PC BOARD  
 SINGLE-SIDE = 1.6MM (MIN.)  
 BELLY TO BELLY = 2.2MM (MIN.)



TITLE: QSFP+ 1X2 Cage Assembly w/ Light Pipe & Heat Sink

DWG#: R-OR-Q2-4CMEG

SHEET: 2/4  
 REV. A

UNIT: mm  
 SCALE: A4 1:1

FINISH: RoHS Compliant

CHECKED: Gary Heng

THIRD ANGLE PROJECTION

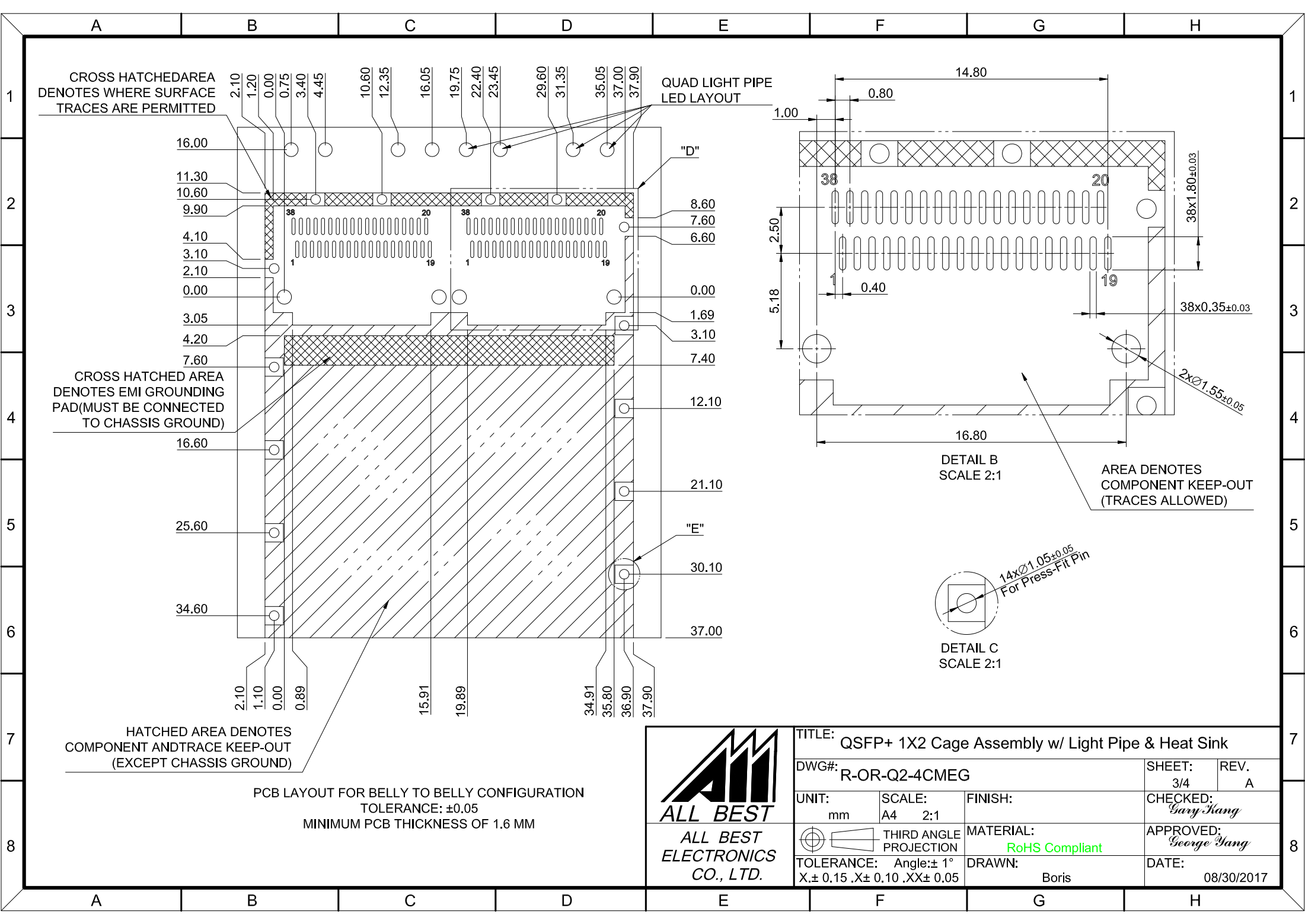
MATERIAL: RoHS Compliant

APPROVED: George Heng

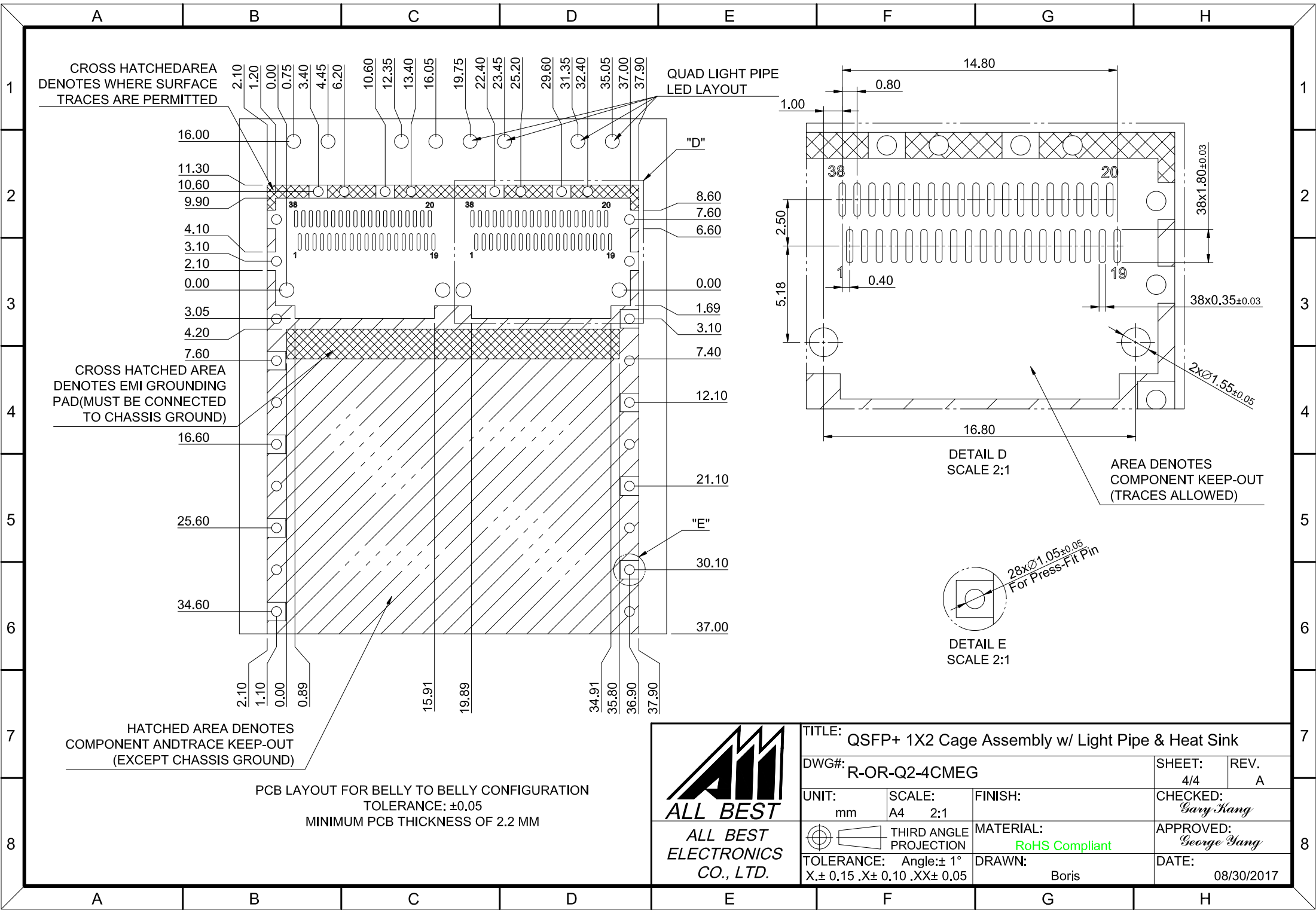
TOLERANCE: Angle: ± 1°  
 X.± 0.15 .X± 0.10 .XX± 0.05

DRAWN: Boris

DATE: 08/30/2017



TITLE: QSFP+ 1X2 Cage Assembly w/ Light Pipe & Heat Sink			
DWG#: R-OR-Q2-4CMEG		SHEET: 3/4	REV. A
UNIT: mm	SCALE: A4 2:1	FINISH:	CHECKED: Gary Yang
THIRD ANGLE PROJECTION		MATERIAL: RoHS Compliant	APPROVED: George Yang
TOLERANCE: Angle: ± 1° X ± 0.15 .X ± 0.10 .XX ± 0.05		DRAWN: Boris	DATE: 08/30/2017

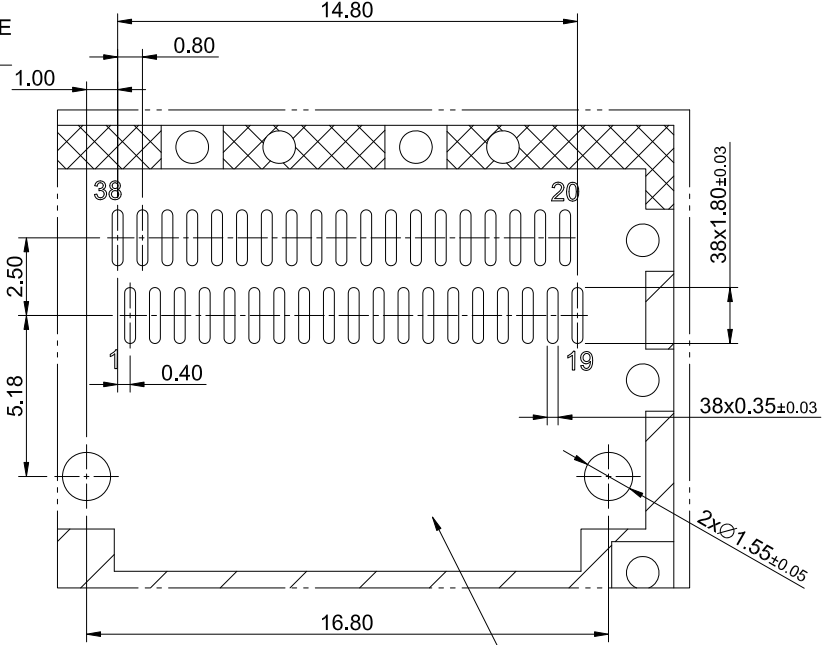


HATCHED AREA DENOTES COMPONENT AND TRACE KEEP-OUT (EXCEPT CHASSIS GROUND)

PCB LAYOUT FOR BELLY TO BELLY CONFIGURATION  
TOLERANCE: ±0.05  
MINIMUM PCB THICKNESS OF 2.2 MM

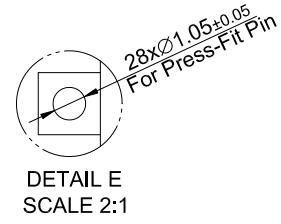


TITLE: QSFP+ 1X2 Cage Assembly w/ Light Pipe & Heat Sink			
DWG#: R-OR-Q2-4CMEG		SHEET: 4/4	REV. A
UNIT: mm	SCALE: A4 2:1	FINISH:	CHECKED: Gary Hang
THIRD ANGLE PROJECTION		MATERIAL: RoHS Compliant	APPROVED: George Hang
TOLERANCE: Angle: ±1° X: ±0.15 .X ± 0.10 .XX ± 0.05		DRAWN: Boris	DATE: 08/30/2017



DETAIL D  
SCALE 2:1

AREA DENOTES COMPONENT KEEP-OUT (TRACES ALLOWED)



DETAIL E  
SCALE 2:1