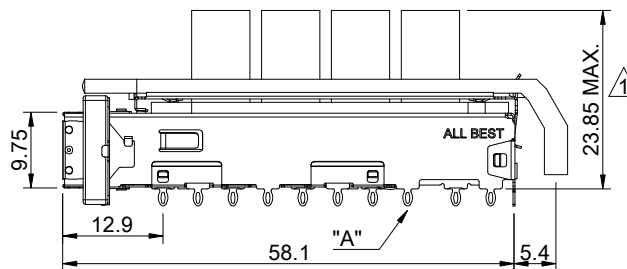
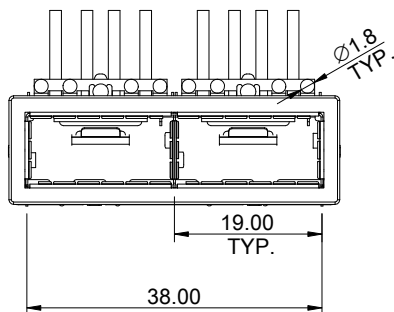
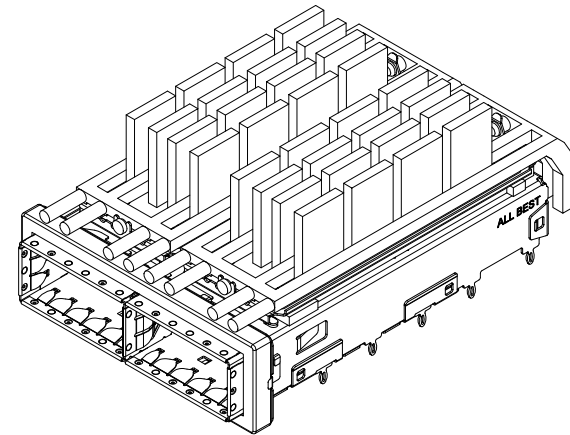


DETAIL A  
SCALE 5:1



MATERIAL  
 CAGE: NICKEL SILVER  
 HEAT SINK: ALUMINUM  
 HEAT SINK CLIP: STAINLESS STEEL  
 EMI SPRING: STAINLESS STEEL  
 EMI GASKET FLANGE: STAINLESS STEEL  
 EMI GASKET: CONDUCTIVE ELASTOMER  
 LIGHT PIPE: PC

FINISH  
 HEAT SINK: ANODE PROCESS

NOTE  
 ▲ DIMENSION APPLIES WITH MODULE INSERTED IN CAGE

THIS PRINT IS  
**PRELIMINARY**  
 UNQUALIFIED PRODUCT  
 CONTACT PRODUCT ENGINEERING  
 BEFORE USING THIS PRINT



TITLE: QSFP+ 1X2 Cage Assembly w/ Light Pipe & Heat Sink

DWG#: R-OR-Q2-4CGEE

SHEET: 1/4  
 REV. REF

UNIT: mm

SCALE: A4 1:1

FINISH:

CHECKED:

THIRD ANGLE PROJECTION

MATERIAL: RoHS Compliant

APPROVED:

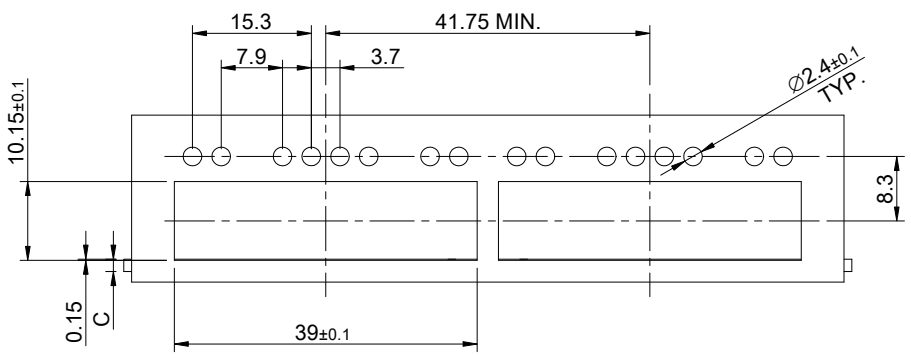
TOLERANCE: Angle: ± 1°  
 X ± 0.25 .X ± 0.20 .XX ± 0.15

DRAWN: Gary

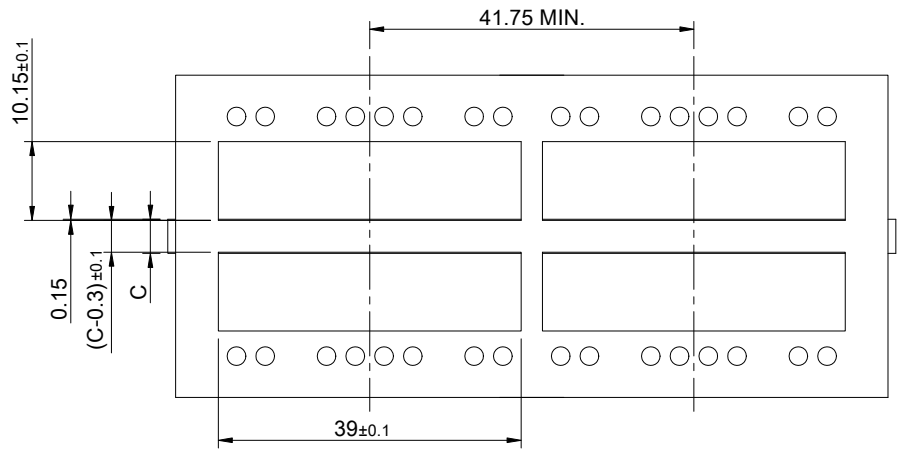
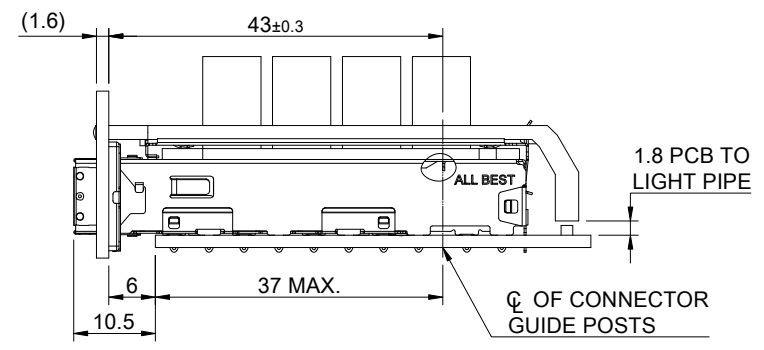
DATE: 03/15/2024

A B C D E F G H

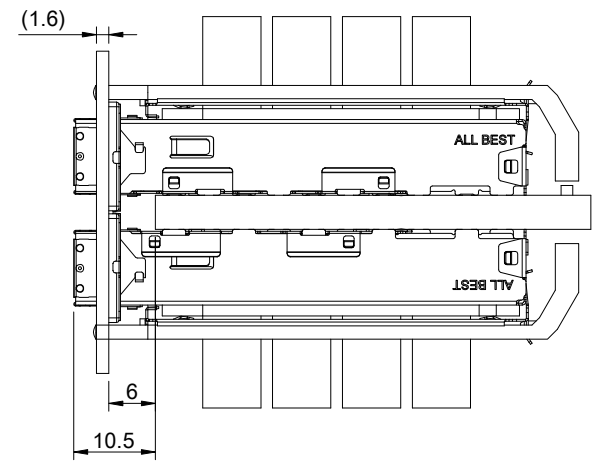
1  
2  
3  
4  
5  
6  
7  
8



SINGLE-SIDE CONFIGURATION



BELLY TO BELLY CONFIGURATION



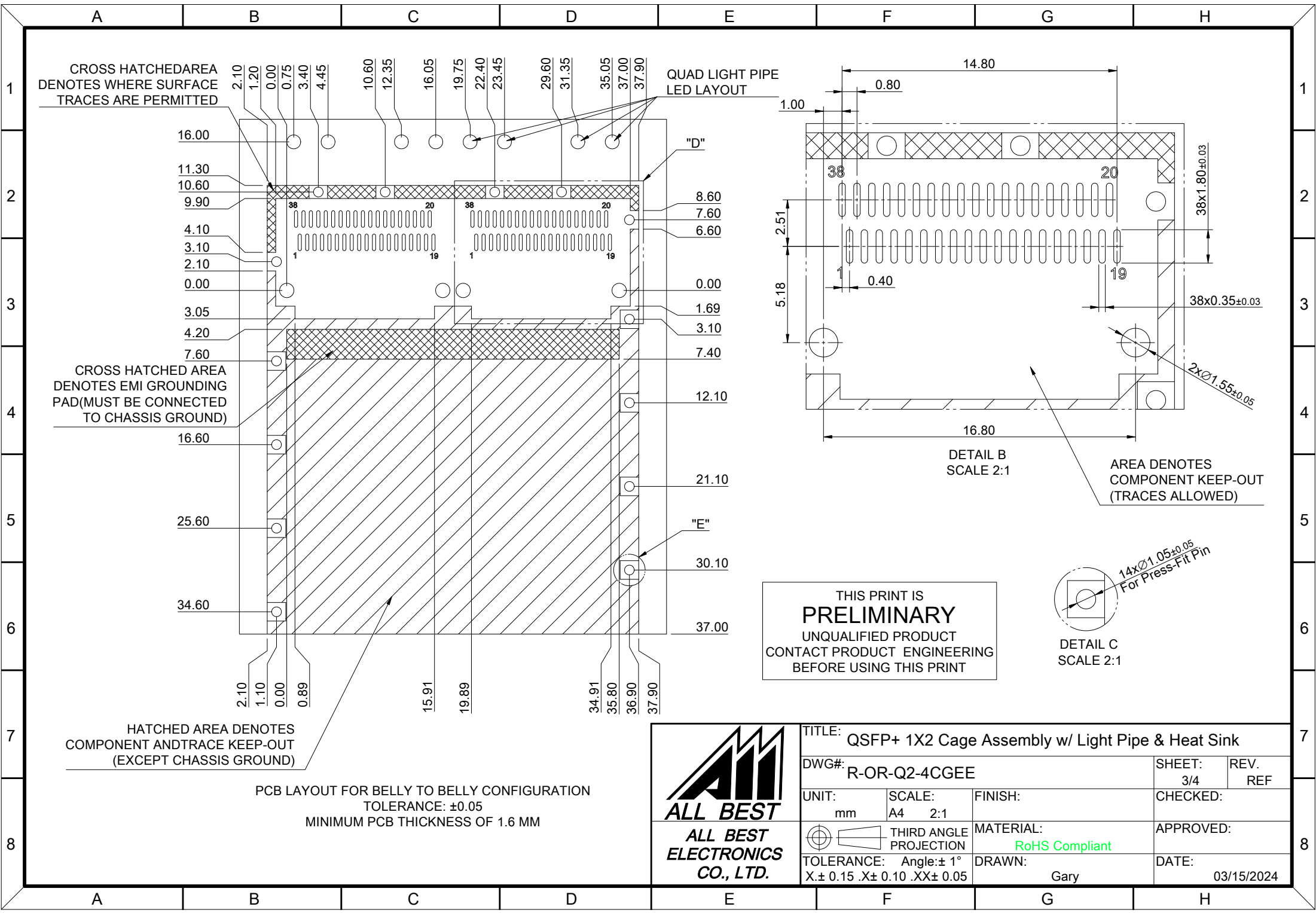
C = THICKNESS OF PC BOARD  
 SINGLE-SIDE = 1.6MM (MIN.)  
 BELLY TO BELLY = 4.4MM (MIN.)

THIS PRINT IS  
**PRELIMINARY**  
 UNQUALIFIED PRODUCT  
 CONTACT PRODUCT ENGINEERING  
 BEFORE USING THIS PRINT



|  |               |                          |                  |
|--|---------------|--------------------------|------------------|
| TITLE: QSFP+ 1X2 Cage Assembly w/ Light Pipe & Heat Sink |               |                          |                  |
| DWG#: R-OR-Q2-4CGEE                                      |               | SHEET: 2/4               | REV. REF         |
| UNIT: mm   | SCALE: A4 1:1 | CHECKED:                 |                  |
| TOLERANCE: Angle: ± 1°<br>X ± 0.15 .X ± 0.10 .XX ± 0.05  |               | MATERIAL: RoHS Compliant | APPROVED:        |
| THIRD ANGLE PROJECTION                                   |               | DRAWN: Gary              | DATE: 03/15/2024 |

A B C D E F G H



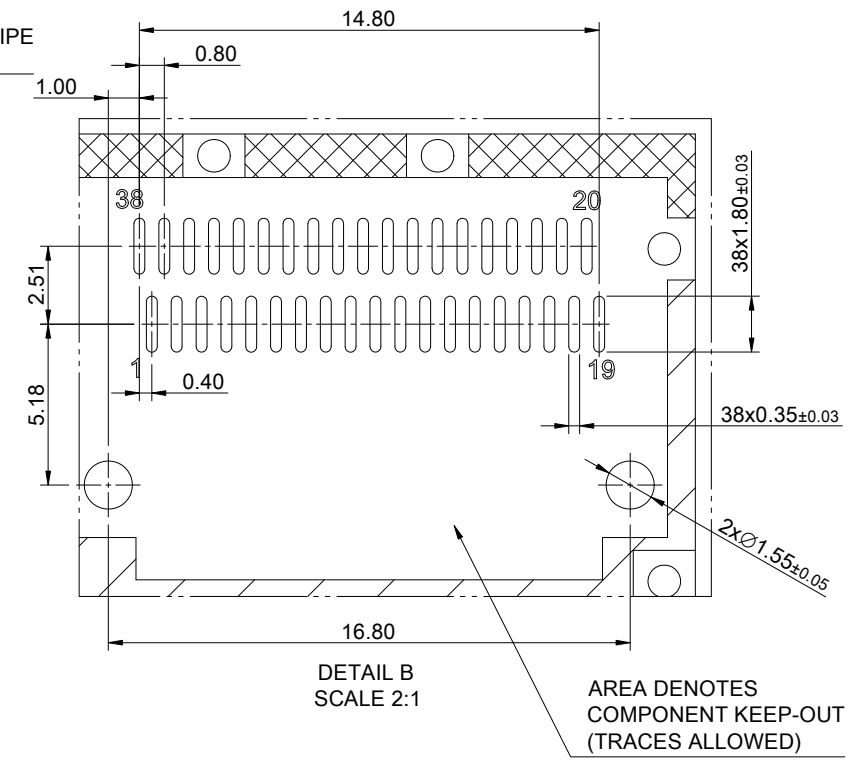
CROSS HATCHED AREA DENOTES WHERE SURFACE TRACES ARE PERMITTED

CROSS HATCHED AREA DENOTES EMI GROUNDING PAD (MUST BE CONNECTED TO CHASSIS GROUND)

HATCHED AREA DENOTES COMPONENT AND TRACE KEEP-OUT (EXCEPT CHASSIS GROUND)

PCB LAYOUT FOR BELLY TO BELLY CONFIGURATION  
TOLERANCE: ±0.05  
MINIMUM PCB THICKNESS OF 1.6 MM

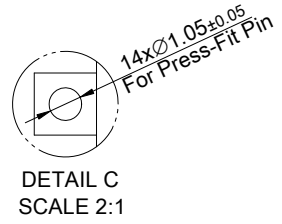
QUAD LIGHT PIPE LED LAYOUT



DETAIL B  
SCALE 2:1

AREA DENOTES COMPONENT KEEP-OUT (TRACES ALLOWED)

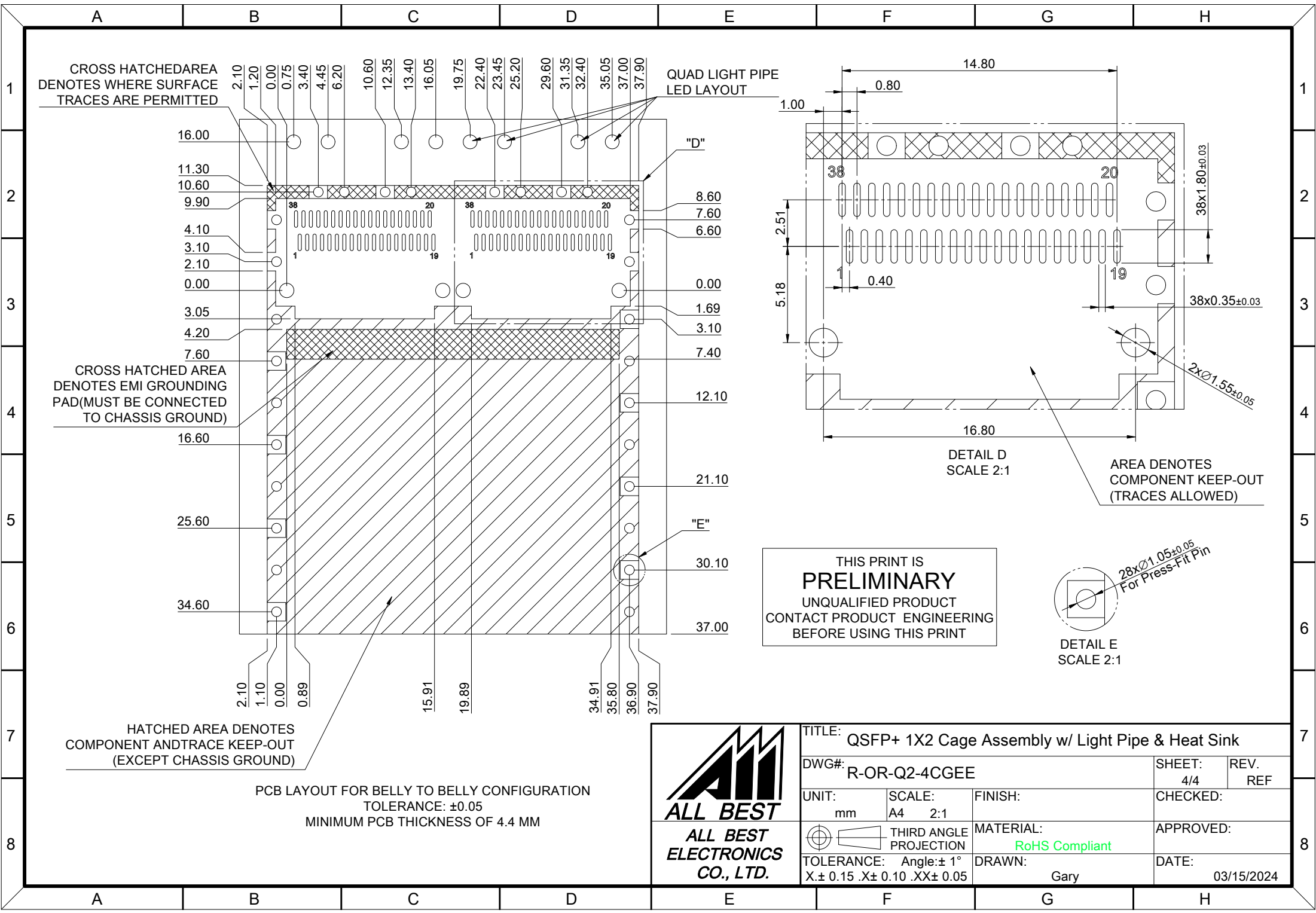
THIS PRINT IS  
**PRELIMINARY**  
UNQUALIFIED PRODUCT  
CONTACT PRODUCT ENGINEERING  
BEFORE USING THIS PRINT



DETAIL C  
SCALE 2:1



|  |               |                          |                  |
|--|---------------|--------------------------|------------------|
| TITLE: QSFP+ 1X2 Cage Assembly w/ Light Pipe & Heat Sink |               |                          |                  |
| DWG#: R-OR-Q2-4CGEE                                      |               | SHEET: 3/4               | REV. REF         |
| UNIT: mm   | SCALE: A4 2:1 | FINISH:                  | CHECKED:         |
| THIRD ANGLE PROJECTION                                   |               | MATERIAL: RoHS Compliant | APPROVED:        |
| TOLERANCE: Angle: ± 1°<br>X ± 0.15 .X ± 0.10 .XX ± 0.05  |               | DRAWN: Gary              | DATE: 03/15/2024 |



CROSS HATCHED AREA DENOTES WHERE SURFACE TRACES ARE PERMITTED

CROSS HATCHED AREA DENOTES EMI GROUNDING PAD (MUST BE CONNECTED TO CHASSIS GROUND)

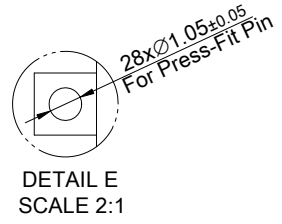
HATCHED AREA DENOTES COMPONENT AND TRACE KEEP-OUT (EXCEPT CHASSIS GROUND)

QUAD LIGHT PIPE LED LAYOUT

DETAIL D SCALE 2:1

AREA DENOTES COMPONENT KEEP-OUT (TRACES ALLOWED)

THIS PRINT IS  
**PRELIMINARY**  
UNQUALIFIED PRODUCT  
CONTACT PRODUCT ENGINEERING  
BEFORE USING THIS PRINT



PCB LAYOUT FOR BELLY TO BELLY CONFIGURATION  
TOLERANCE:  $\pm 0.05$   
MINIMUM PCB THICKNESS OF 4.4 MM



|   |               |                          |                  |
|---|---------------|--------------------------|------------------|
| TITLE: QSFP+ 1X2 Cage Assembly w/ Light Pipe & Heat Sink                        |               |                          |                  |
| DWG#: R-OR-Q2-4CGEE   |               | SHEET: 4/4               | REV. REF         |
| UNIT: mm  | SCALE: A4 2:1 | FINISH:                  | CHECKED:         |
| THIRD ANGLE PROJECTION  |               | MATERIAL: RoHS Compliant | APPROVED:        |
| TOLERANCE: Angle: $\pm 1^\circ$<br>X: $\pm 0.15$ .X: $\pm 0.10$ .XX: $\pm 0.05$ |               | DRAWN: Gary              | DATE: 03/15/2024 |