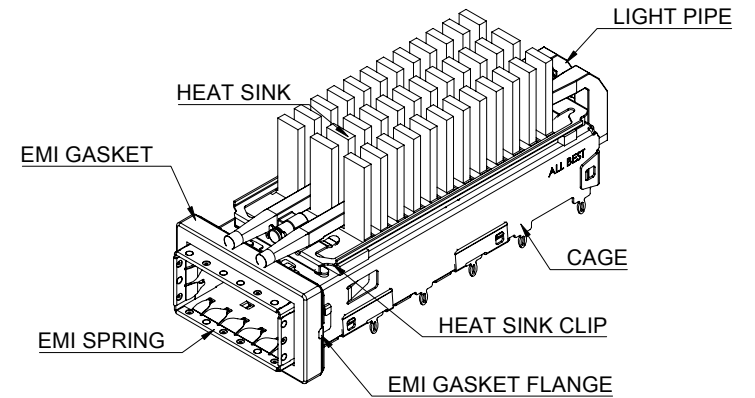
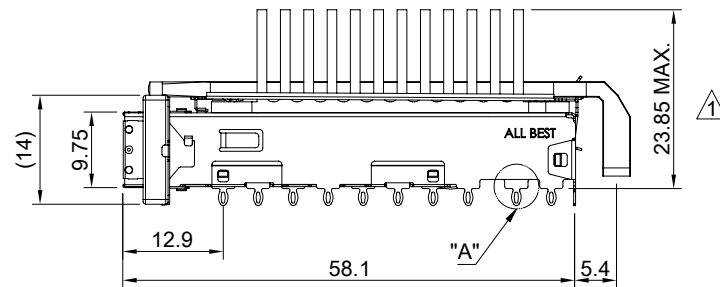
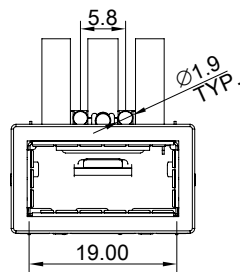


DETAIL A
SCALE 5 : 1

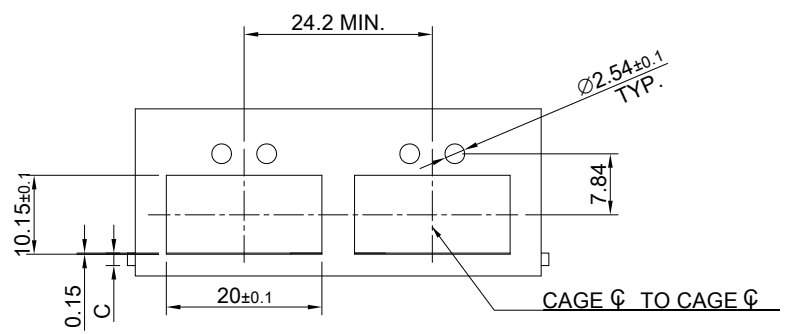


MATERIAL
 CAGE: NICKEL COPPER
 HEAT SINK: ALUMINUM
 LIGHT PIPE CLIP: STAINLESS STEEL
 EMI SPRING: STAINLESS STEEL
 EMI GASKET FLANGE: STAINLESS STEEL
 EMI GASKET: CONDUCTIVE ELASTOMER
 LIGHT PIPE: PC

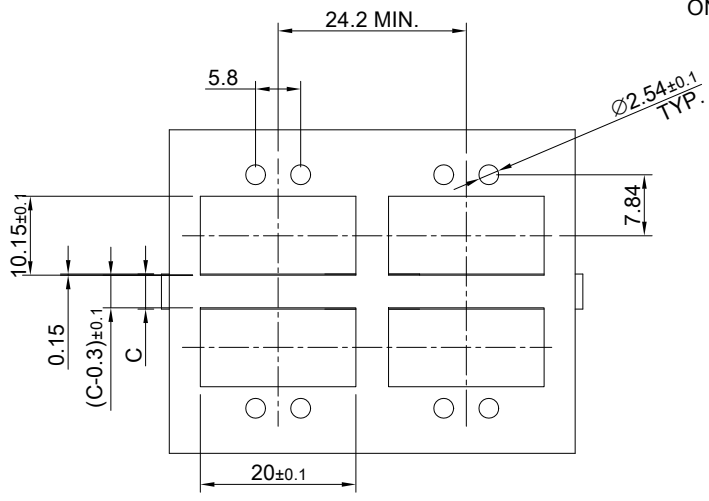
FINISH
 HEAT SINK: ANODE PROCESS

NOTE
 △ DIMENSION APPLIES WITH MODULE INSERTED IN CAGE

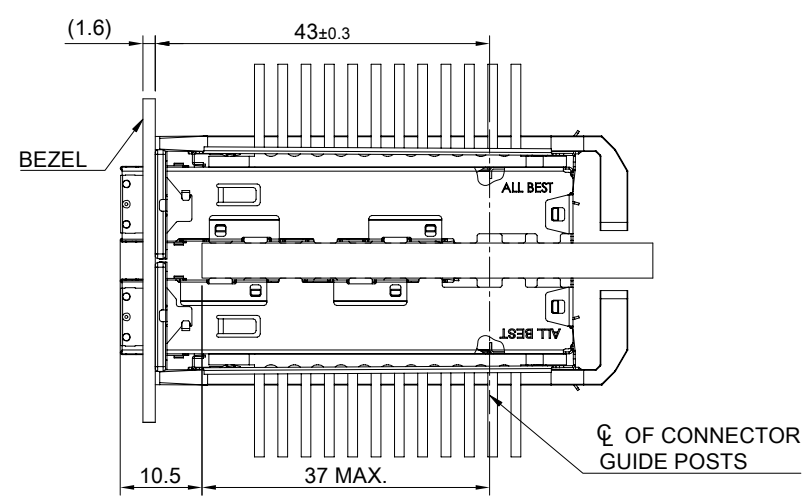
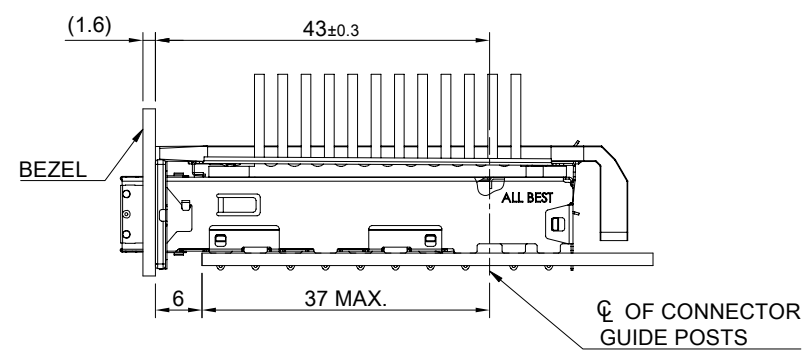
	TITLE: QSFP+ 1X1 Cage Assembly w/ Light Pipe & Heat Sink		
	DWG#: R-OR-Q1-4CGE3		SHEET: 1/4
	UNIT: mm	SCALE: A4 1:1	REV. C
	THIRD ANGLE PROJECTION		CHECKED: Gary Kang
TOLERANCE: Angle: ± 1°		MATERIAL: RoHS Compliant	APPROVED: George Yang
X.± 0.25 .X± 0.20 .XX± 0.15		DRAWN: Joe	DATE: 09/26/2023



ONE SIDED CONFIGURATION

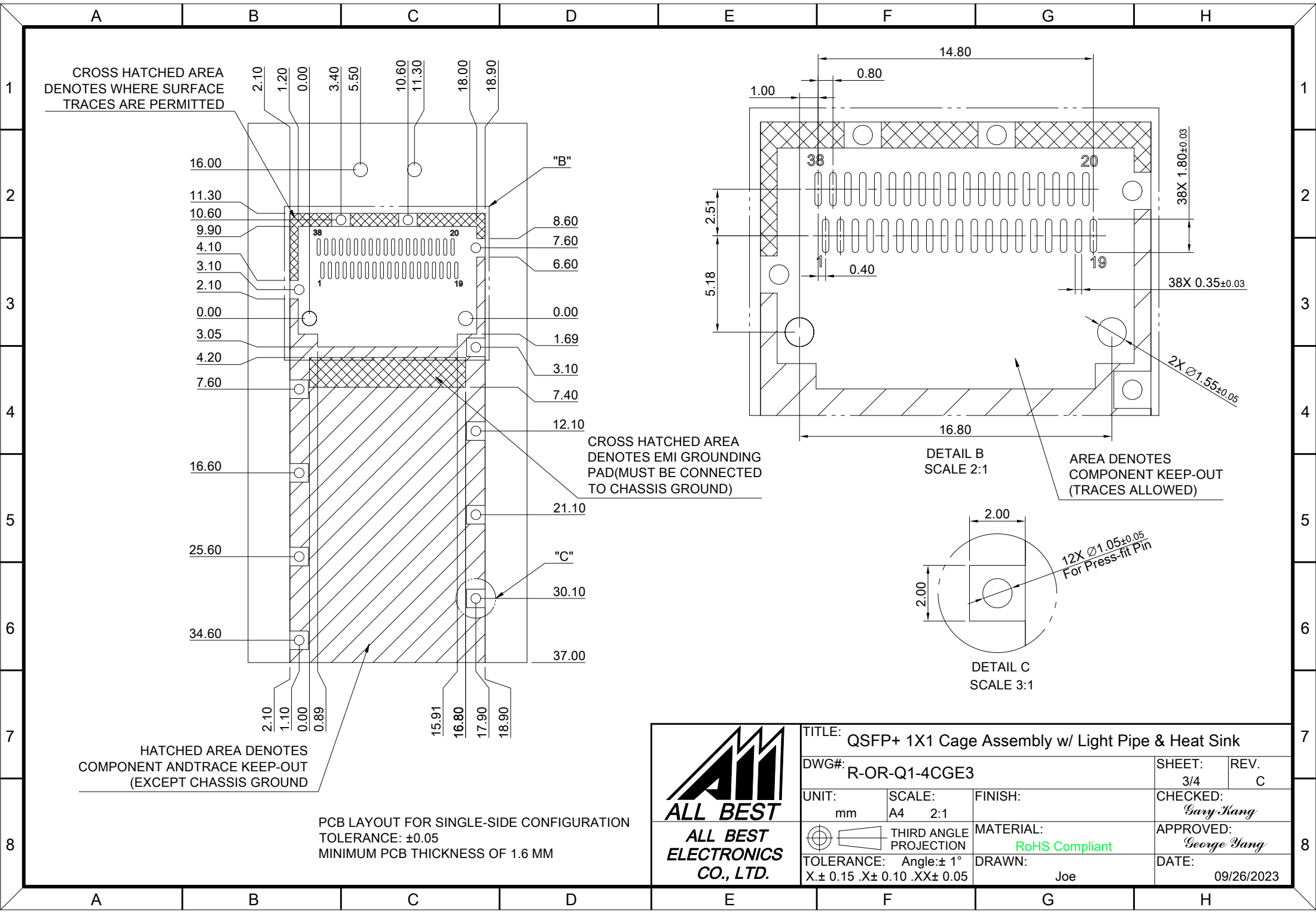


BELLY TO BELLY CONFIGURATION



C=THICKNESS OF PC BOARD
 SINGLE SIDED=1.6MM(MIN)
 DOUBLE SIDE=4.5MM(MIN)

	TITLE: QSFP+ 1X1 Cage Assembly w/ Light Pipe & Heat Sink		
	DWG#: R-OR-Q1-4CGE3		SHEET: 2/4
	UNIT: mm	SCALE: A4 1:1	REV. C
	FINISH:		CHECKED: Gary Kang
THIRD ANGLE PROJECTION		MATERIAL: RoHS Compliant	APPROVED: George Yang
TOLERANCE: Angle: ± 1°		DRAWN: Joe	DATE: 09/26/2023
X.± 0.15 .X± 0.10 .XX± 0.05			



CROSS HATCHED AREA DENOTES WHERE SURFACE TRACES ARE PERMITTED

CROSS HATCHED AREA DENOTES EMI GROUNDING PAD (MUST BE CONNECTED TO CHASSIS GROUND)

HATCHED AREA DENOTES COMPONENT AND TRACE KEEP-OUT (EXCEPT CHASSIS GROUND)

PCB LAYOUT FOR SINGLE-SIDE CONFIGURATION
TOLERANCE: ±0.05
MINIMUM PCB THICKNESS OF 1.6 MM



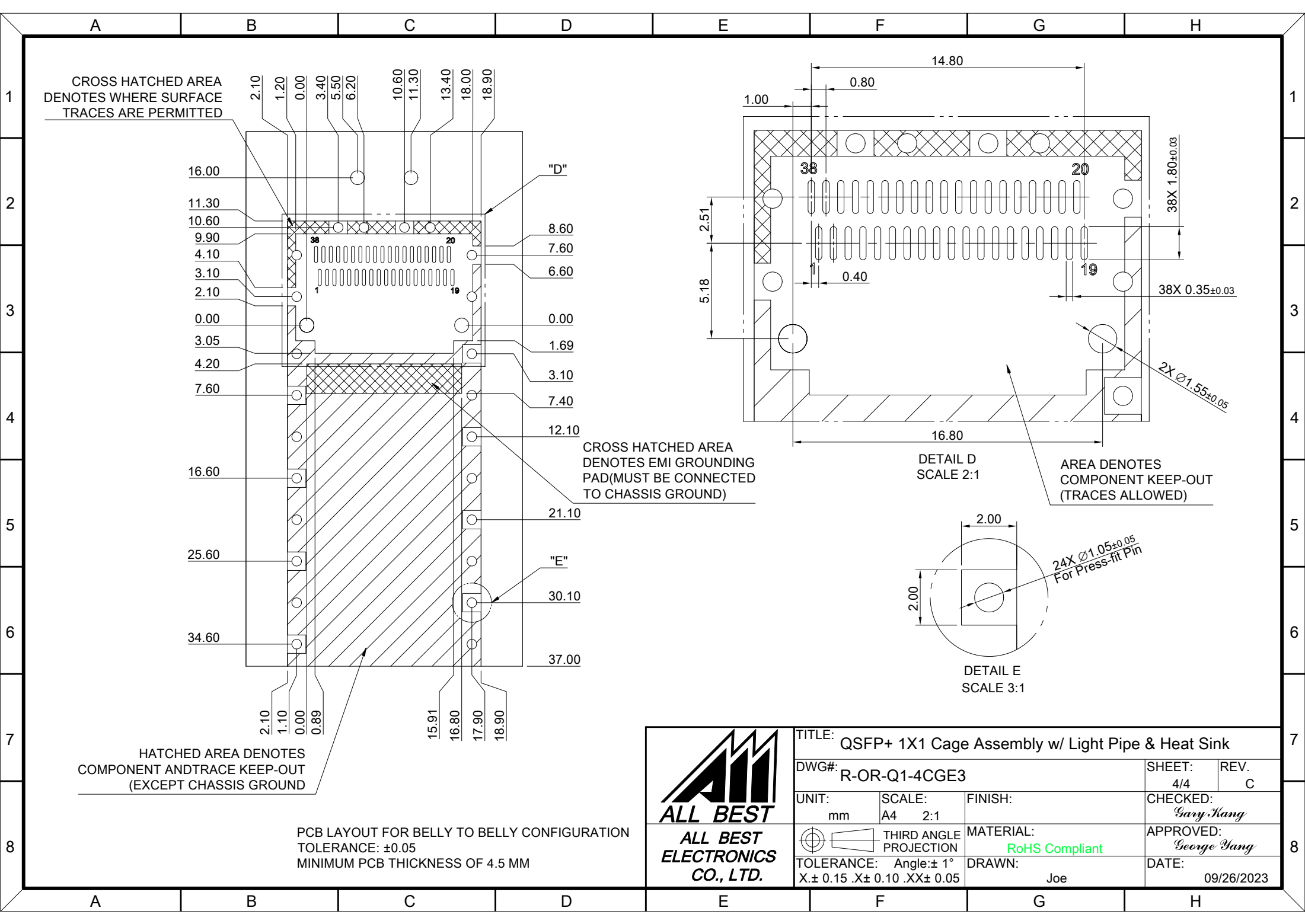
TITLE: QSFP+ 1X1 Cage Assembly w/ Light Pipe & Heat Sink

DWG#: R-OR-Q1-4CGE3

UNIT: mm	SCALE: A4 2:1	FINISH:	SHEET: 3/4	REV. C
CHECKED: <i>Gary Kang</i>			APPROVED: <i>George Yang</i>	

THIRD ANGLE PROJECTION	MATERIAL: RoHS Compliant	DATE: 09/26/2023
------------------------	-----------------------------	---------------------

TOLERANCE: Angle: ±1° X ± 0.15 .X ± 0.10 .XX ± 0.05	DRAWN: Joe
--	---------------



CROSS HATCHED AREA DENOTES WHERE SURFACE TRACES ARE PERMITTED

CROSS HATCHED AREA DENOTES EMI GROUNDING PAD (MUST BE CONNECTED TO CHASSIS GROUND)

HATCHED AREA DENOTES COMPONENT AND TRACE KEEP-OUT (EXCEPT CHASSIS GROUND)

PCB LAYOUT FOR BELLY TO BELLY CONFIGURATION
TOLERANCE: ±0.05
MINIMUM PCB THICKNESS OF 4.5 MM

DETAIL D
SCALE 2:1

AREA DENOTES COMPONENT KEEP-OUT (TRACES ALLOWED)

DETAIL E
SCALE 3:1



TITLE: QSFP+ 1X1 Cage Assembly w/ Light Pipe & Heat Sink

DWG#: R-OR-Q1-4CGE3

UNIT: mm SCALE: A4 2:1

THIRD ANGLE PROJECTION

TOLERANCE: Angle: ±1°
X ± 0.15 .X ± 0.10 .XX ± 0.05

FINISH: MATERIAL: RoHS Compliant

DRAWN: Joe

SHEET: 4/4 REV. C

CHECKED: Gary Kang

APPROVED: George Yang

DATE: 09/26/2023