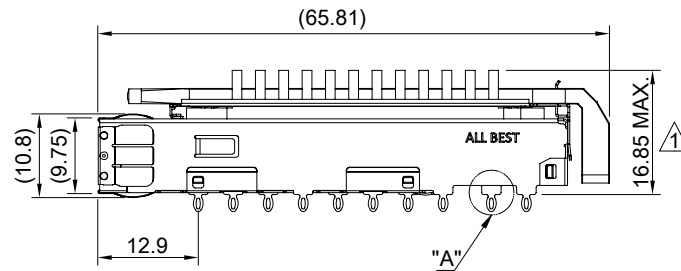
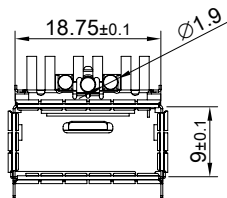
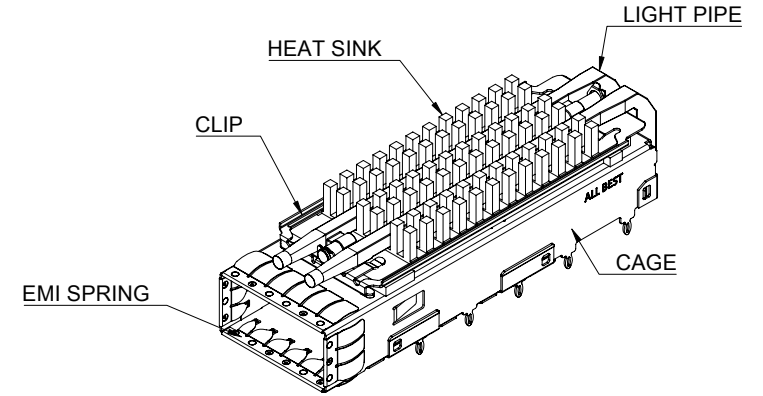


DETAIL A  
SCALE 5:1



MATERIAL  
 CAGE: NICKEL SILVER  
 EMI SPRING: STAINLESS STEEL  
 HEAT SINK: ALUMINUM  
 HEAT SINK CLIP: STAINLESS STEEL  
 LIGHT PIPE: PC

FINISH  
 HEAT SINK: ANODE PROCESS

NOTE  
 ▲ DIMENSION APPLIES WITH MODULE INSERTED IN CAGE

THIS PRINT IS  
**PRELIMINARY**  
 UNQUALIFIED PRODUCT  
 CONTACT PRODUCT ENGINEERING  
 BEFORE USING THIS PRINT



TITLE: QSFP56 1X1 Cage w/ Light Pipe & Heat Sink (SAN)

DWG#: R-OR-DZQ1-4CMEA-MK

SHEET: 1/4  
 REV. REF

UNIT: mm  
 SCALE: A4 1:1

FINISH:

CHECKED:

THIRD ANGLE PROJECTION

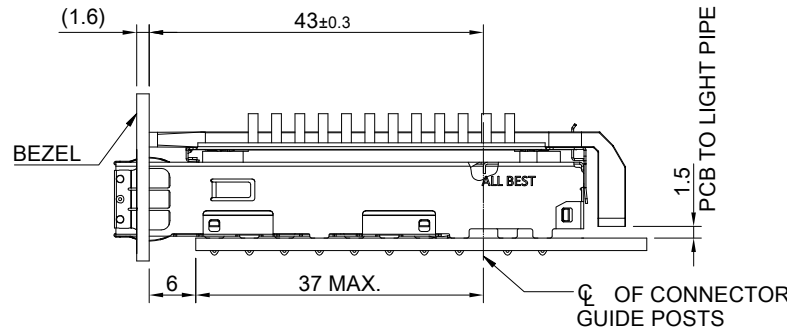
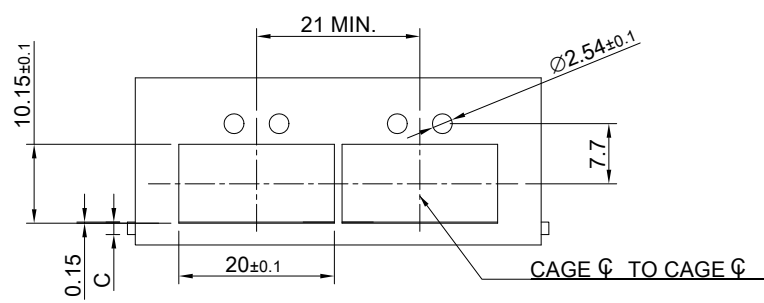
MATERIAL:  
 RoHS Compliant

APPROVED:

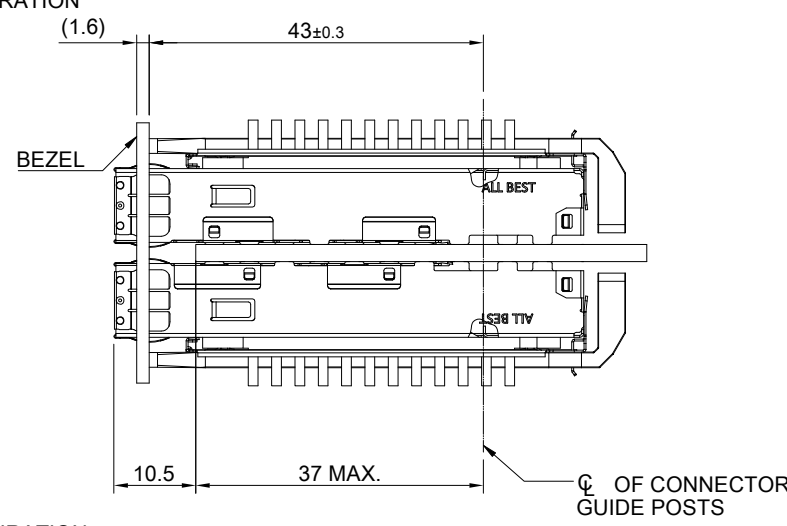
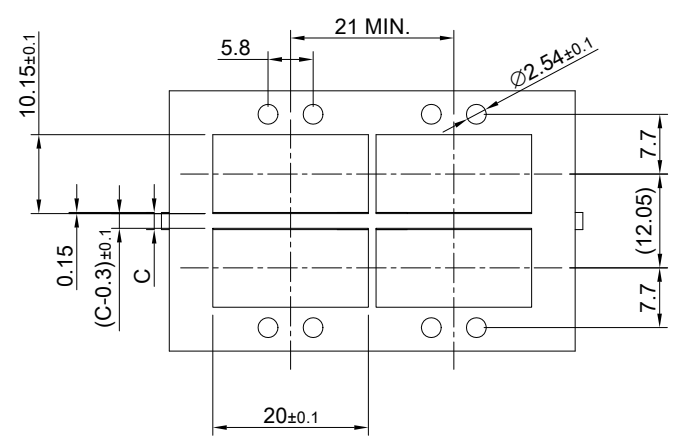
TOLERANCE: Angle: ± 1°  
 X ± 0.25 .X ± 0.20 .XX ± 0.15

DRAWN: Pohsiung

DATE: 3/14/2024



SINGLE-SIDE CONFIGURATION

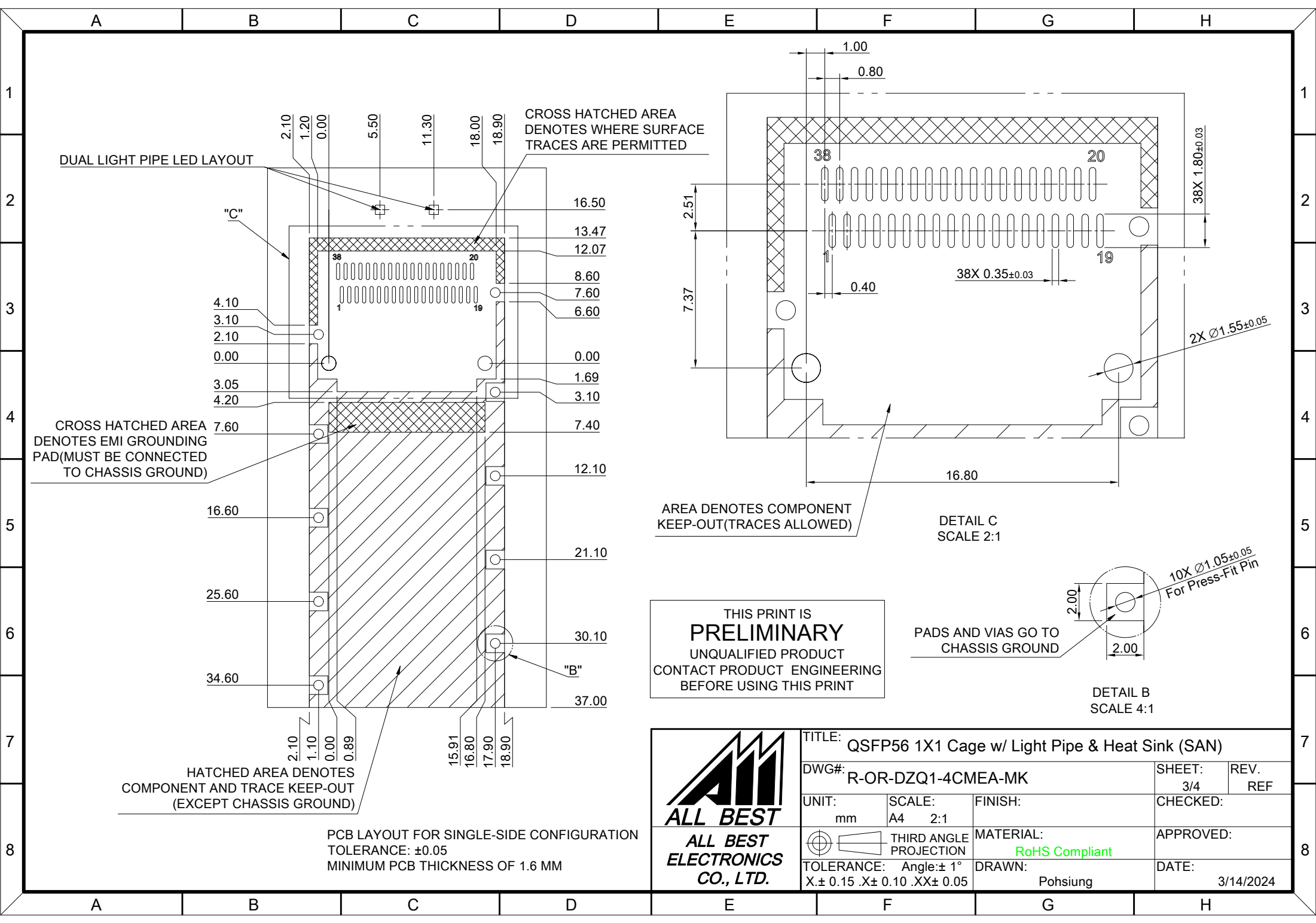


BELLY TO BELLY CONFIGURATION

C = THICKNESS OF PC BOARD  
 SINGLE-SIDE = 1.6MM (MIN.)  
 BELLY TO BELLY = 2.2MM (MIN.)

THIS PRINT IS  
**PRELIMINARY**  
 UNQUALIFIED PRODUCT  
 CONTACT PRODUCT ENGINEERING  
 BEFORE USING THIS PRINT

<p><b>ALL BEST</b>  <b>ELECTRONICS</b>  <b>CO., LTD.</b></p>	<b>TITLE:</b> QSFP56 1X1 Cage w/ Light Pipe & Heat Sink (SAN)		<b>SHEET:</b> 2/4		<b>REV.</b> REF	
	<b>DWG#:</b> R-OR-DZQ1-4CMEA-MK		<b>CHECKED:</b>		<b>APPROVED:</b>	
	<b>UNIT:</b> mm	<b>SCALE:</b> A4 1:1	<b>FINISH:</b>		<b>MATERIAL:</b> RoHS Compliant	
	<b>TOLERANCE:</b> Angle: ± 1° X ± 0.15 .X ± 0.10 .XX ± 0.05		<b>THIRD ANGLE PROJECTION</b>	<b>DRAWN:</b> Pohsiung		<b>DATE:</b> 3/14/2024



DUAL LIGHT PIPE LED LAYOUT

CROSS HATCHED AREA DENOTES WHERE SURFACE TRACES ARE PERMITTED

CROSS HATCHED AREA DENOTES EMI GROUNDING PAD (MUST BE CONNECTED TO CHASSIS GROUND)

HATCHED AREA DENOTES COMPONENT AND TRACE KEEP-OUT (EXCEPT CHASSIS GROUND)

AREA DENOTES COMPONENT KEEP-OUT (TRACES ALLOWED)

DETAIL C SCALE 2:1

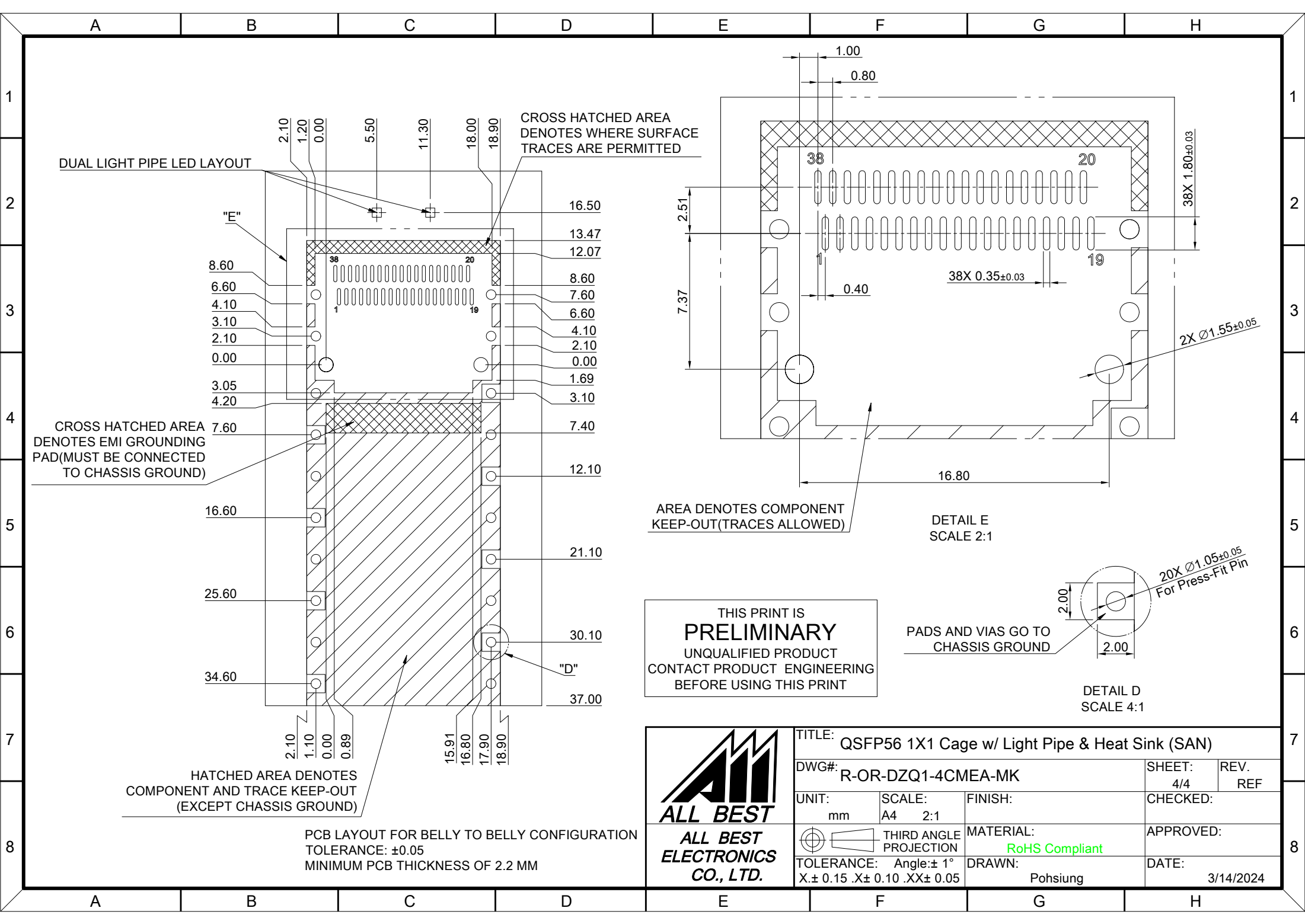
PADS AND VIAS GO TO CHASSIS GROUND

DETAIL B SCALE 4:1

THIS PRINT IS PRELIMINARY UNQUALIFIED PRODUCT CONTACT PRODUCT ENGINEERING BEFORE USING THIS PRINT

PCB LAYOUT FOR SINGLE-SIDE CONFIGURATION TOLERANCE: ±0.05 MINIMUM PCB THICKNESS OF 1.6 MM

<p><b>ALL BEST ELECTRONICS CO., LTD.</b></p>	TITLE: QSFP56 1X1 Cage w/ Light Pipe & Heat Sink (SAN)		SHEET: 3/4	REV. REF
	DWG#: R-OR-DZQ1-4CMEA-MK		CHECKED:	APPROVED:
	UNIT: mm	SCALE: A4 2:1	MATERIAL: RoHS Compliant	
	TOLERANCE: Angle: ±1° X ± 0.15 .X ± 0.10 .XX ± 0.05		DRAWN: Pohsiung	DATE: 3/14/2024



THIS PRINT IS  
**PRELIMINARY**  
UNQUALIFIED PRODUCT  
CONTACT PRODUCT ENGINEERING  
BEFORE USING THIS PRINT



TITLE: QSFP56 1X1 Cage w/ Light Pipe & Heat Sink (SAN)			
DWG#: R-OR-DZQ1-4CMEA-MK		SHEET: 4/4	REV. REF
UNIT: mm	SCALE: A4 2:1	CHECKED:	
MATERIAL: RoHS Compliant		APPROVED:	
TOLERANCE: Angle: ±1° X ± 0.15 .X ± 0.10 .XX ± 0.05		DRAWN: Pohsiung	DATE: 3/14/2024