

MATERIAL  
 CAGE: NICKEL SILVER  
 CONNECTOR HOUSING: THERMOPLASTIC, UL 94V-0(LCP)  
 EMI SPRING: STAINLESS STEEL  
 CONTACTS: COPPER ALLOY  
 HEAT SINK: ALUMINUM  
 HEAT SINK CLIP: STAINLESS STEEL  
 LIGHT PIPE: PC  
 LIGHT SHIELD: THERMOPLASTIC

FINISH  
 HEAT SINK: ANODE PROCESS  
 CONTACT: 15μ" MIN. GOLD ON MATING END;  
 30μ" MIN. MATTE TIN ON TERMINAL END;  
 ALL UNDERPLATED 50μ" MIN. NICKEL

ELECTRICAL CHARACTERISTICS  
 CONTACT CURRENT RATING: 0.5 AMPERE  
 VOLTAGE RATING: 30VAC  
 CONTACT RESISTANCE: 80 mΩ MAX.  
 DIELECTRIC WITHSTANDING VOLTAGE: 300VAC

THIS PRINT IS  
**PRELIMINARY**  
 UNQUALIFIED PRODUCT  
 CONTACT PRODUCT ENGINEERING  
 BEFORE USING THIS PRINT



TITLE: Stacked QSFP28 2x1 Assembly w/  
 Internal / External Heat Sink & Light Pipe

DWG#: R-TR-ZQT1-4CMNLI-AIO-4

UNIT: mm

SCALE: A4 1:1

FINISH:

SHEET: 1/3  
 REV. REF



THIRD ANGLE  
 PROJECTION

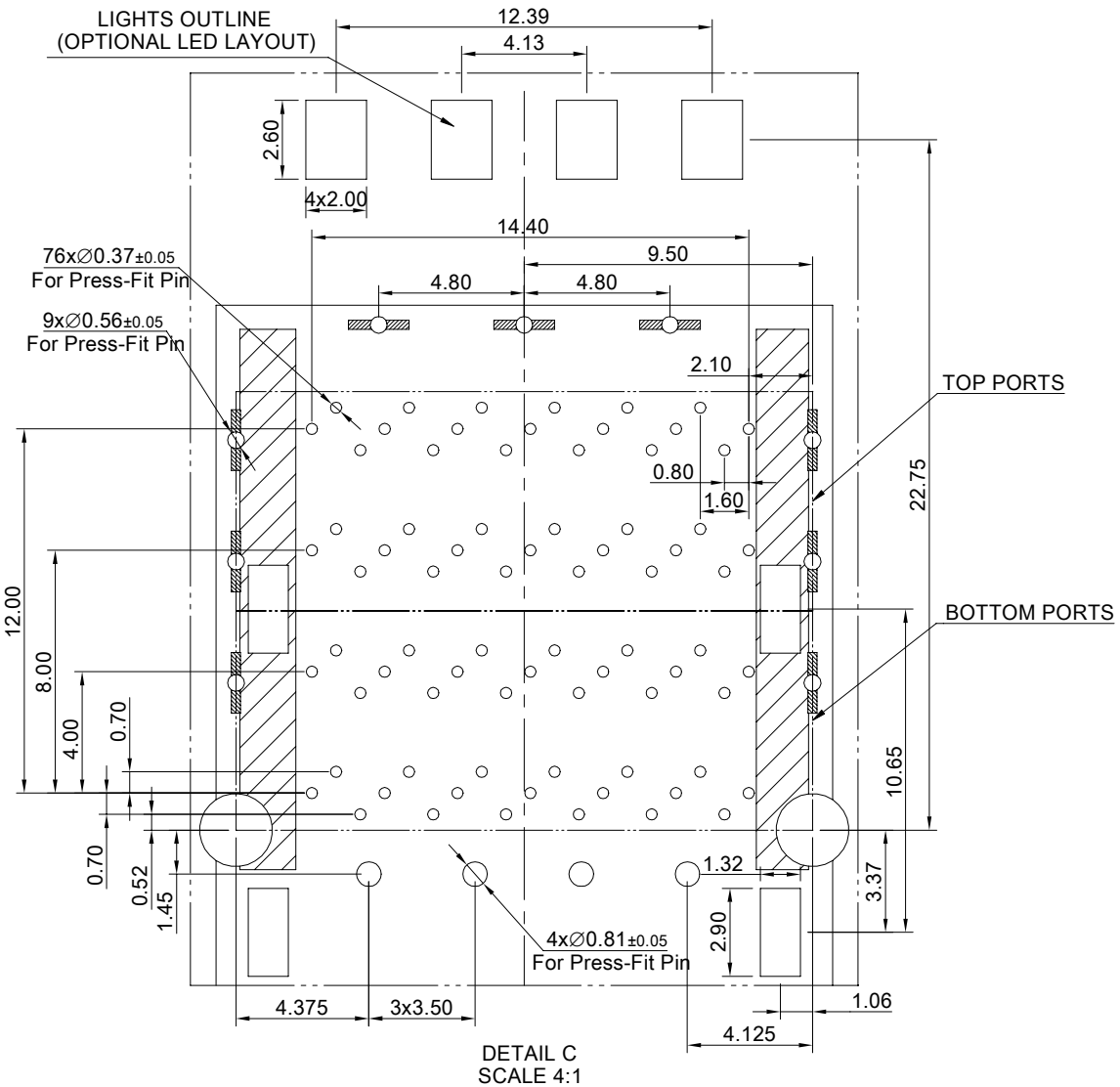
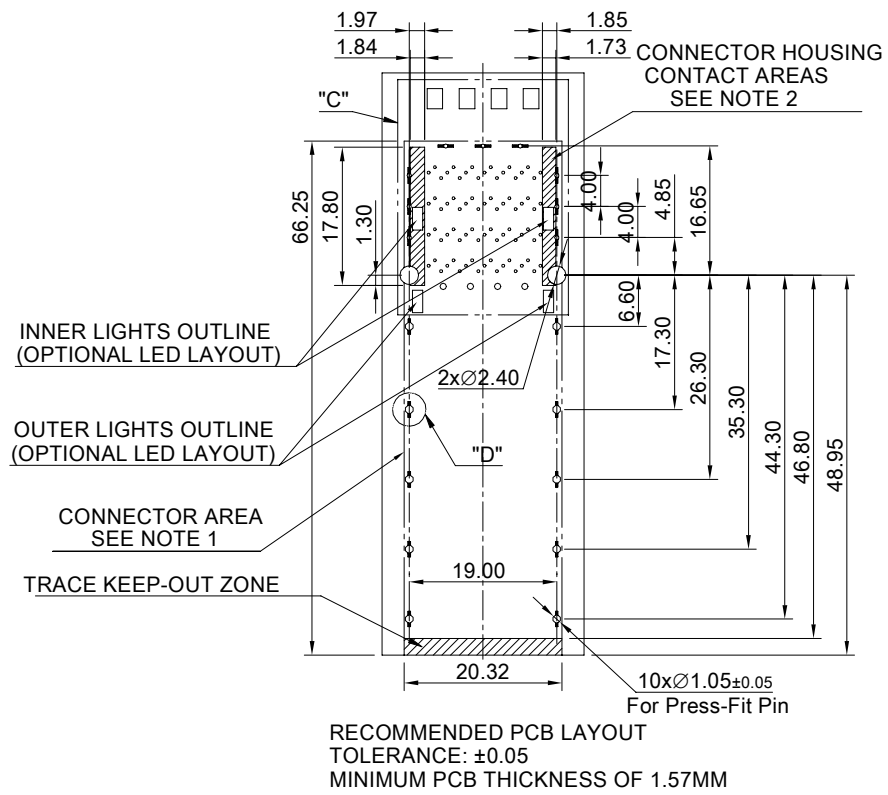
MATERIAL:  
 RoHS Compliant

APPROVED:

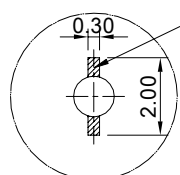
TOLERANCE: Angle: ± 1°  
 X.±0.25 .X±0.20 .XX±0.15

DRAWN:  
 Yilu

DATE:  
 03/20/2024

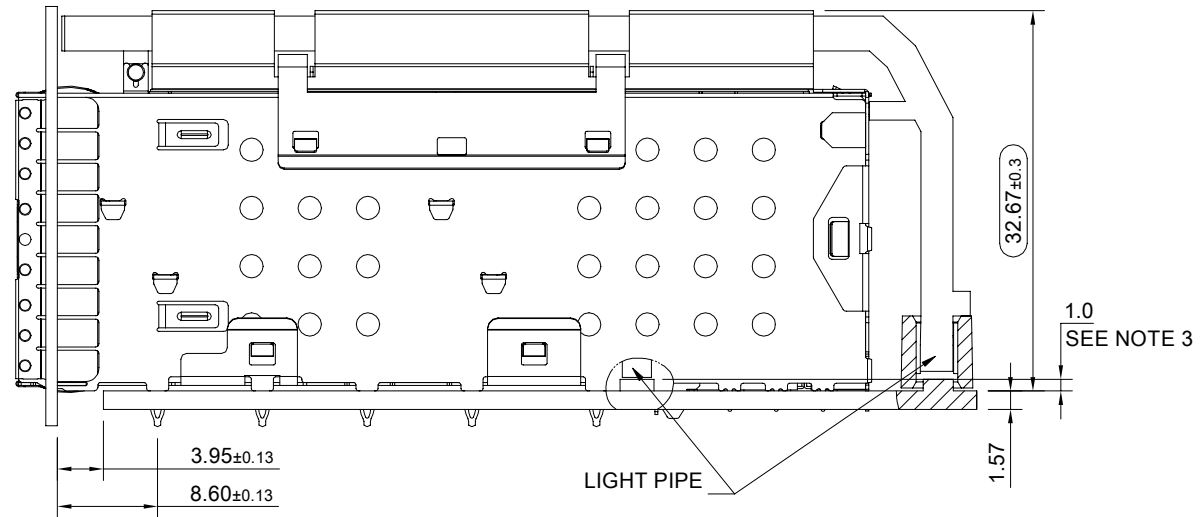
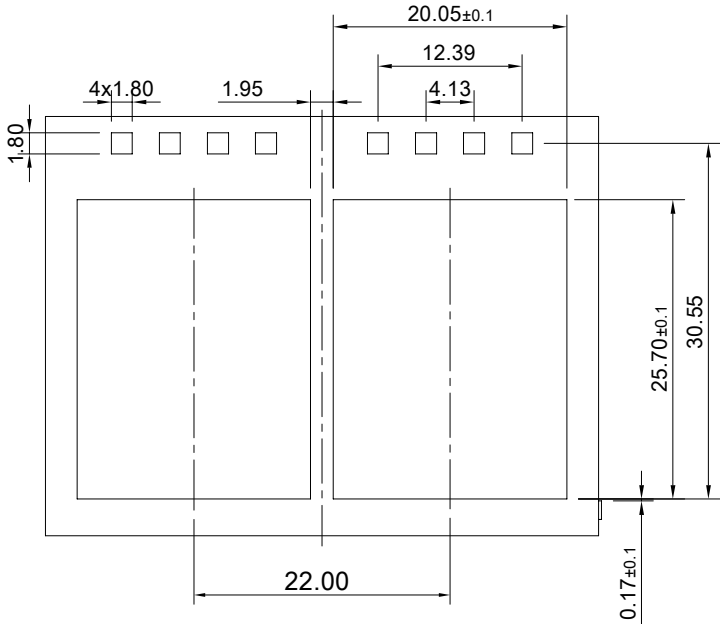


TRACE KEEP-OUT ZONE  
AROUND PRESS-FIT TAIL HOLES



THIS PRINT IS  
**PRELIMINARY**  
UNQUALIFIED PRODUCT  
CONTACT PRODUCT ENGINEERING  
BEFORE USING THIS PRINT

	TITLE: Stacked QSFP28 2x1 Assembly w/ Internal / External Heat Sink & Light Pipe		SHEET:	REV.
	DWG#: R-TR-ZQT1-4CMNLI-AIO-4		2/3	REF
UNIT: mm	SCALE: A4 1:1	FINISH:	CHECKED:	
TOLERANCE: Angle: $\pm 1^\circ$ X. $\pm 0.15$ .X $\pm 0.1$ .XX $\pm 0.05$		MATERIAL: RoHS Compliant	APPROVED:	
THIRD ANGLE PROJECTION		DRAWN: Yilu	DATE: 03/20/2024	



RECOMMENDED PANEL CUT-OUT

THIS PRINT IS  
**PRELIMINARY**  
 UNQUALIFIED PRODUCT  
 CONTACT PRODUCT ENGINEERING  
 BEFORE USING THIS PRINT

NOTES

1. THE ENTIRE AREA UNDER THE CONNECTOR CAGE IS A COMPONENT KEEP-OUT ZONE. THE AREA UNDER THE CONNECTOR MODULE IS A TRACE KEEP-OUT AREA.
2. HATCHED AREAS REPRESENT ZONES ON THE PCB THAT COME IN CONTACT WITH OR BE IN CLOSE PROXIMITY TO THE PLASTIC HOUSING OR THE CONNECTOR CAGE. INDICATED AREAS TO BE CONSIDERED TRACE FREE.
3. MIN. DISTANCE FROM THE TOP SIDE OF PCB TO LIGHT PIPE.  
 SMD LED HIGHLY RECOMMENDED : 0.8mm(MIN.)~1.2mm(MAX.).  
 THE VIEWING ANGLE SUGGESTED IS <60°

 <b>ALL BEST</b> <b>ELECTRONICS</b> <b>CO., LTD.</b>	TITLE: Stacked QSFP28 2x1 Assembly w/ Internal / External Heat Sink & Light Pipe		SHEET:	REV.
	DWG#: R-TR-ZQT1-4CMNLI-AIO-4		3/3	REF
	UNIT: mm	SCALE: A4 3:2	FINISH:	CHECKED:
	TOLERANCE: X.±0.15 .XX±0.1 .XXX±0.05		MATERIAL: RoHS Compliant	APPROVED:
THIRD ANGLE PROJECTION		DRAWN: Yilu	DATE: 03/20/2024	