

MATERIAL  
 CAGE: NICKEL SILVER  
 EMI SPRING: STAINLESS STEEL  
 EMI GASKET FLANGE: STAINLESS STEEL  
 EMI GASKET: CONDUCTIVE ELASTOMER  
 HEAT SINK: ALUMINUM  
 HEAT SINK CLIP: STAINLESS STEEL  
 LIGHT PIPE: PC

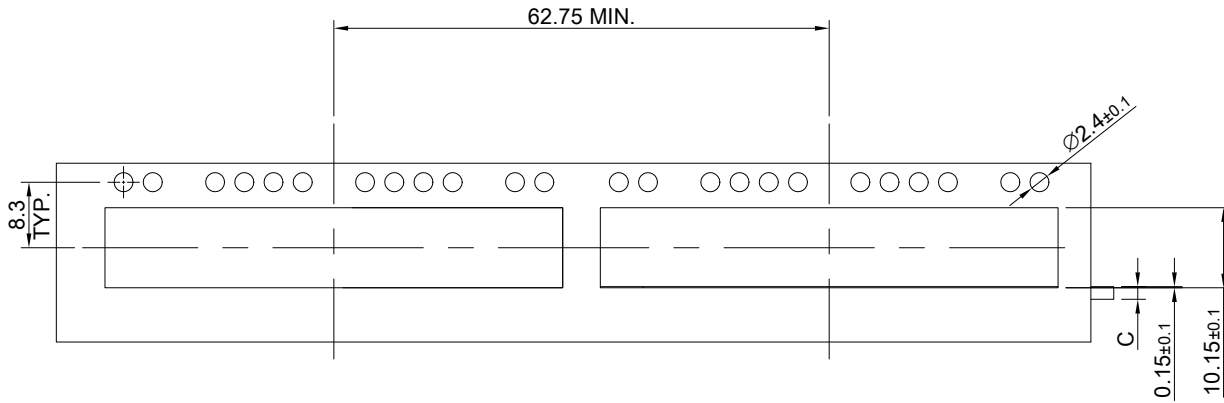
FINISH  
 HEAT SINK: ANODE PROCESS

NOTE  
 ① DIMENSION APPLIES WITH MODULE INSERTED IN CAGE

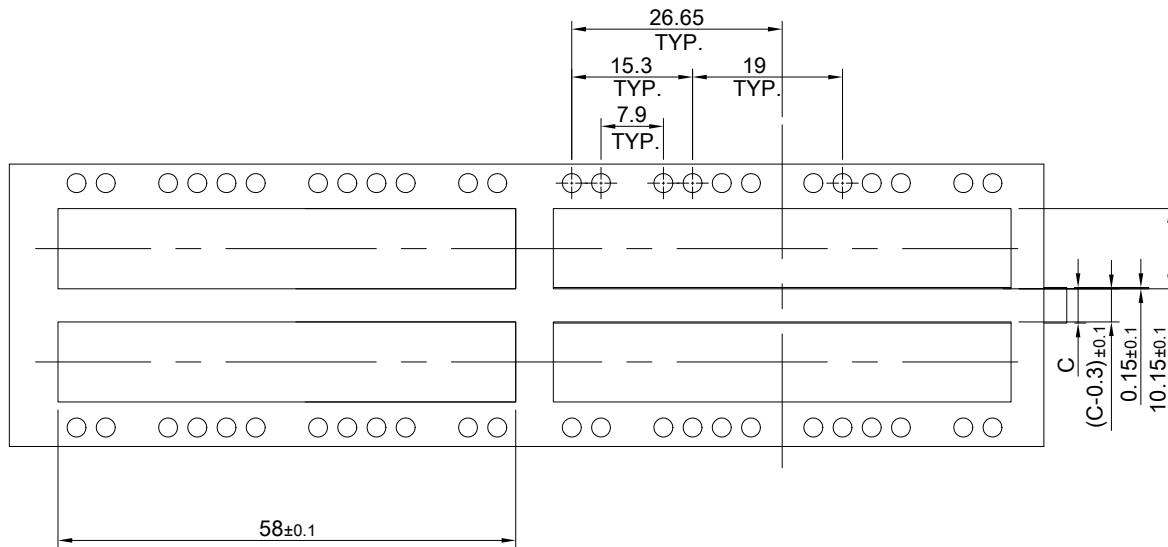
THIS PRINT IS  
**PRELIMINARY**  
 UNQUALIFIED PRODUCT  
 CONTACT PRODUCT ENGINEERING  
 BEFORE USING THIS PRINT



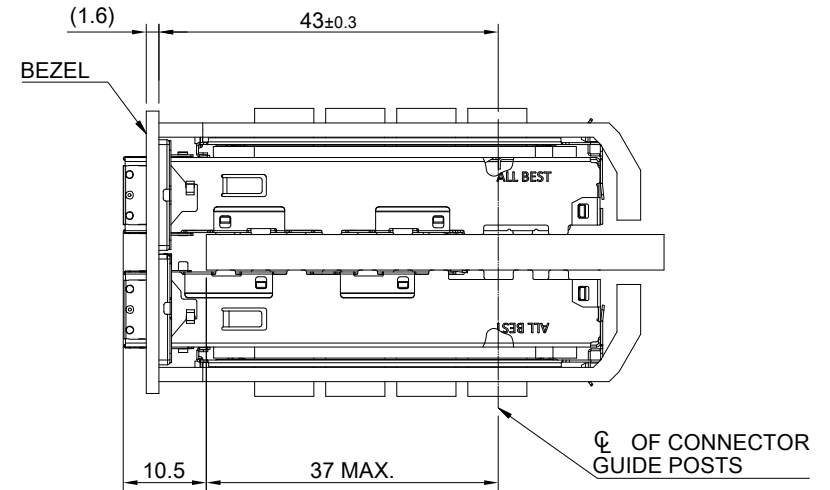
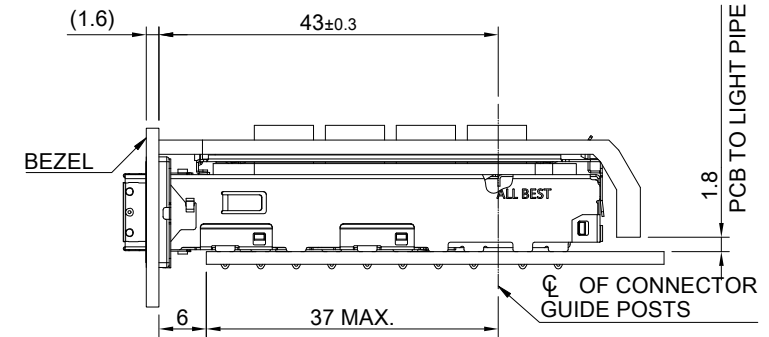
TITLE: QSFP56 1X3 Cage Assembly w/ Light Pipe & Heat Sink			
DWG#: R-OR-DZQ3-4CGEH-MK		SHEET: 1/4	REV. REF
UNIT: mm	SCALE: A4 1:1	FINISH:	
TOLERANCE: Angle: ± 1° X ± 0.25 .X ± 0.20 .XX ± 0.15		MATERIAL: RoHS Compliant	APPROVED:
THIRD ANGLE PROJECTION		DRAWN: Pohsiung	DATE: 3/14/2024



SINGLE-SIDE CONFIGURATION



BELLY TO BELLY CONFIGURATION



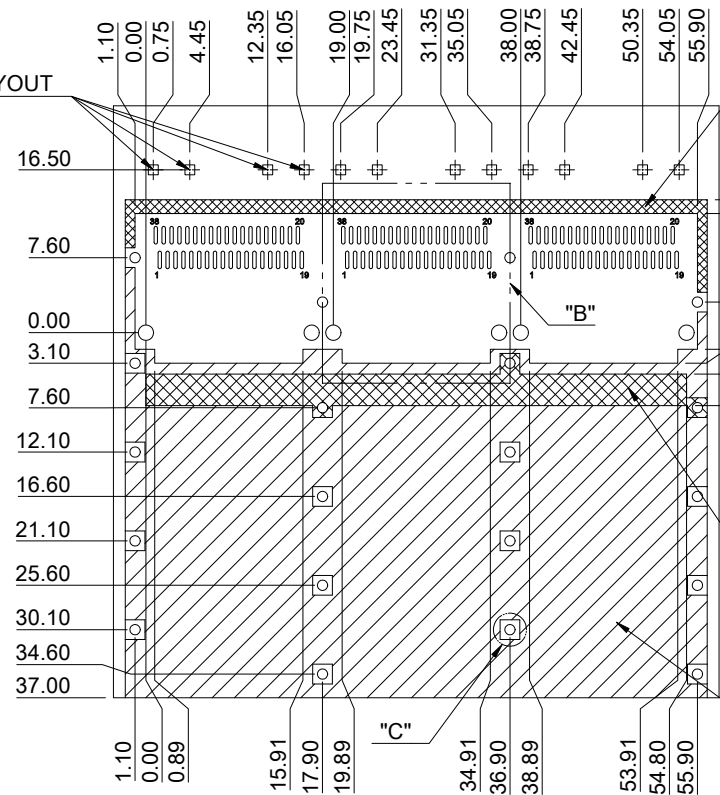
C = THICKNESS OF PC BOARD  
SINGLE-SIDE = 1.6MM (MIN.)  
BELLY TO BELLY = 4.5MM (MIN.)

THIS PRINT IS  
**PRELIMINARY**  
UNQUALIFIED PRODUCT  
CONTACT PRODUCT ENGINEERING  
BEFORE USING THIS PRINT



TITLE: QSFP56 1X3 Cage Assembly w/ Light Pipe & Heat Sink			
DWG#: R-OR-DZQ3-4CGEH-MK			SHEET: 2/4
UNIT: mm			REV. REF
SCALE: A4 1:1	FINISH:		CHECKED:
THIRD ANGLE PROJECTION	MATERIAL: RoHS Compliant		APPROVED:
TOLERANCE: Angle: ± 1° X ± 0.15 .X ± 0.10 .XX ± 0.05	DRAWN: Pohsiung		DATE: 3/14/2024

# QUAD LIGHT PIPE LED LAYOUT

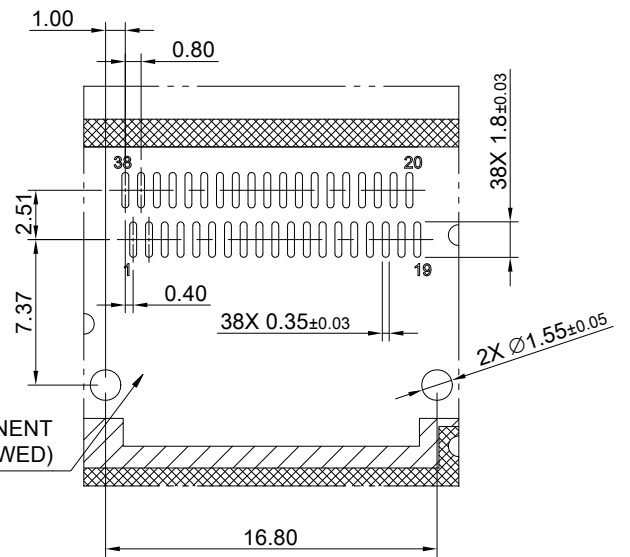


CROSS HATCHED AREA  
DENOTES WHERE SURFACE  
TRACES ARE PERMITTED

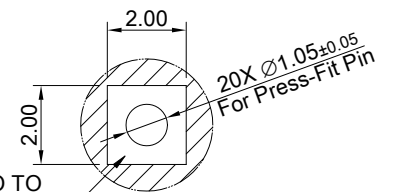
AREA DENOTES COMPONENT  
KEEP-OUT (TRACES ALLOWED)

CROSS HATCHED AREA  
DENOTES EMI GROUNDING  
PAD (MUST BE CONNECTED  
TO CHASSIS GROUND)

HATCHED AREA DENOTES  
COMPONENT AND TRACE KEEP-OUT  
(EXCEPT CHASSIS GROUND)



DETAIL B  
SCALE 2:1



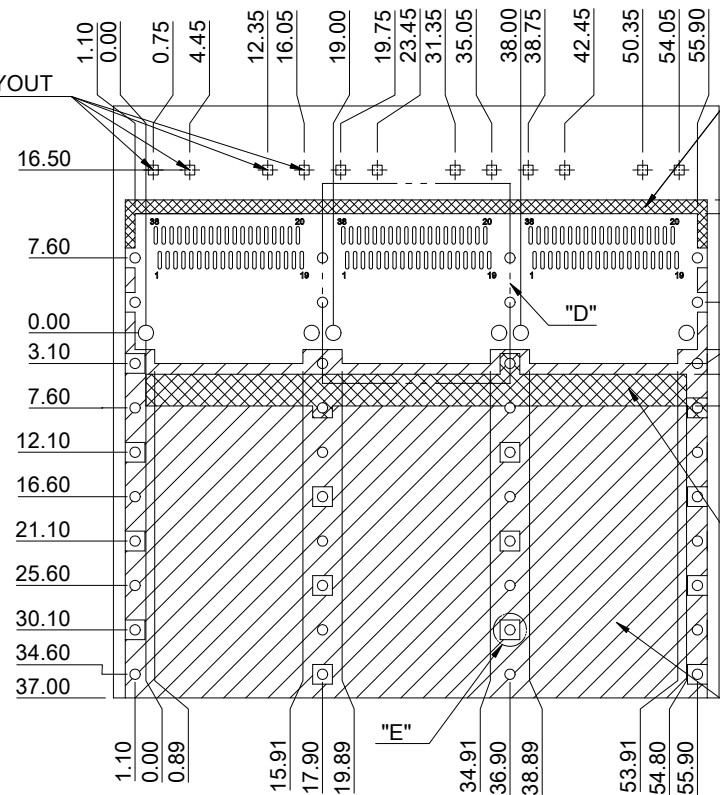
DETAIL C  
SCALE 4:1

PCB LAYOUT FOR SINGLE-SIDE CONFIGURATION  
TOLERANCE:  $\pm 0.05$   
MINIMUM PCB THICKNESS OF 1.6 MM

THIS PRINT IS  
**PRELIMINARY**  
UNQUALIFIED PRODUCT  
CONTACT PRODUCT ENGINEERING  
BEFORE USING THIS PRINT

	TITLE: QSFP56 1X3 Cage Assembly w/ Light Pipe & Heat Sink		
	DWG#: R-OR-DZQ3-4CGEH-MK		SHEET: 3/4
	UNIT: mm	SCALE: A4 5:4	FINISH:
	TOLERANCE: Angle: $\pm 1^\circ$ X. $\pm 0.15$ .X $\pm 0.10$ .XX $\pm 0.05$		MATERIAL: RoHS Compliant
DRAWN: Pohsiung		DATE: 3/14/2024	
		CHECKED:	APPROVED:
		REV. REF	

# QUAD LIGHT PIPE LED LAYOUT

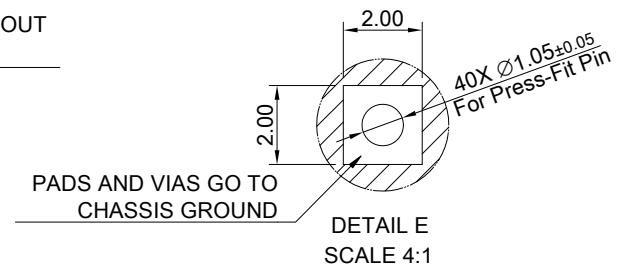
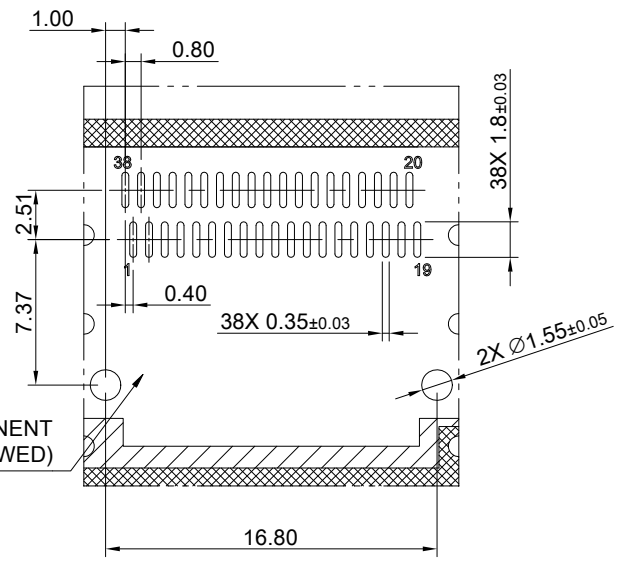


CROSS HATCHED AREA  
DENOTES WHERE SURFACE  
TRACES ARE PERMITTED

AREA DENOTES COMPONENT  
KEEP-OUT (TRACES ALLOWED)

CROSS HATCHED AREA  
DENOTES EMI GROUNDING  
PAD (MUST BE CONNECTED  
TO CHASSIS GROUND)

HATCHED AREA DENOTES  
COMPONENT AND TRACE KEEP-OUT  
(EXCEPT CHASSIS GROUND)



PCB LAYOUT FOR BELLY TO BELLY CONFIGURATION  
TOLERANCE:  $\pm 0.05$   
MINIMUM PCB THICKNESS OF 4.5 MM

THIS PRINT IS  
**PRELIMINARY**  
UNQUALIFIED PRODUCT  
CONTACT PRODUCT ENGINEERING  
BEFORE USING THIS PRINT

	TITLE: QSFP56 1X3 Cage Assembly w/ Light Pipe & Heat Sink		
	DWG#: R-OR-DZQ3-4CGEH-MK		SHEET: 4/4
	UNIT: mm	SCALE: A4 5:4	FINISH:
	TOLERANCE: Angle: $\pm 1^\circ$ X. $\pm 0.15$ .X $\pm 0.10$ .XX $\pm 0.05$		MATERIAL: RoHS Compliant
DRAWN: Pohsiung		DATE: 3/14/2024	
CHECKED:		APPROVED:	
REV. REF			