

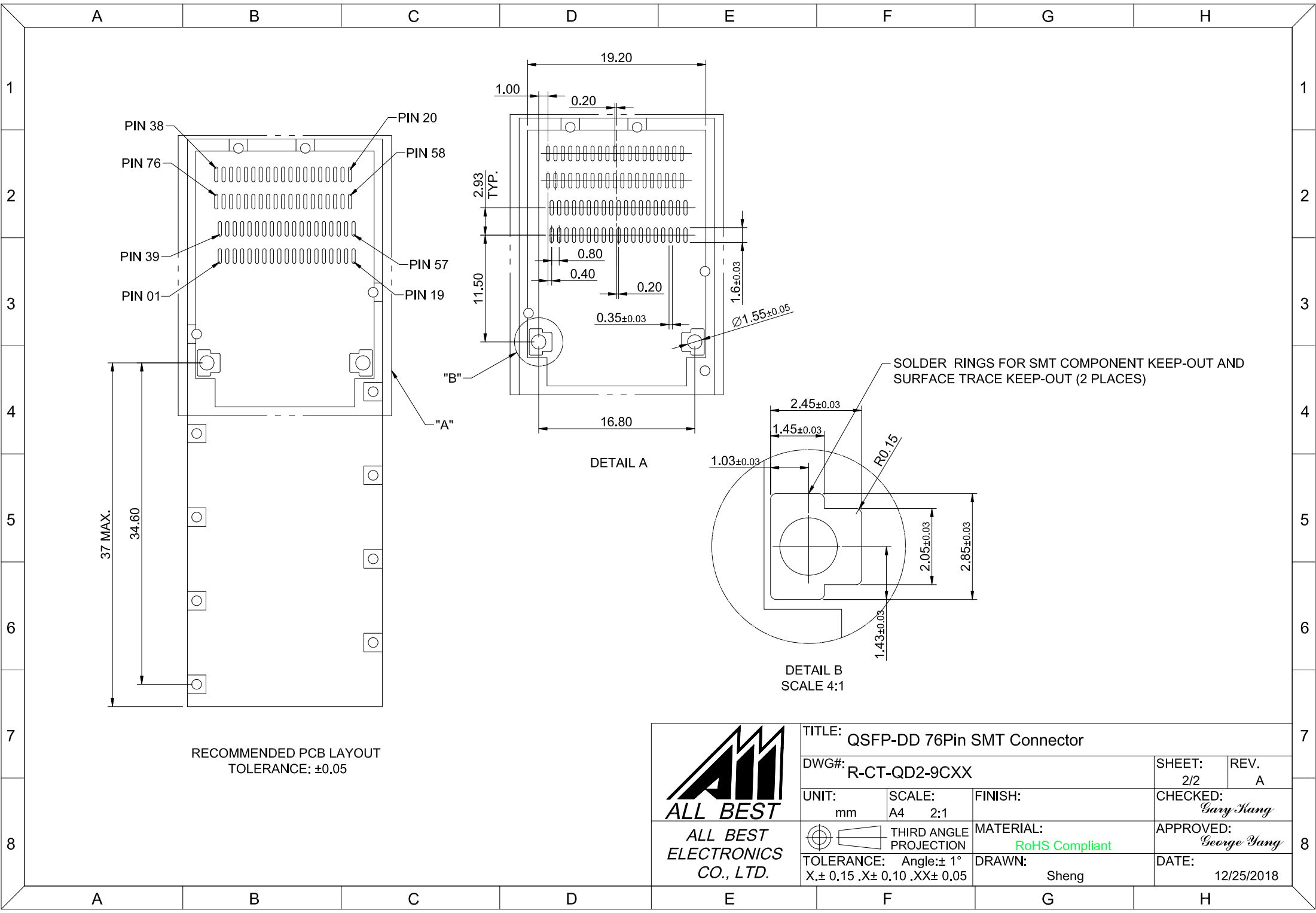
**MATERIALS**  
 CONTACTS: COPPER ALLOY  
 HOUSING: LCP THERMOPLASTIC 94V-0 (BLACK)

**ELECTRICAL CHARACTERISTICS**  
 CONTACT CURRENT RATING: 1.0 AMPERE  
 DIELECTRIC WITHSTANDING VOLTAGE: 300 VDC  
 VOLTAGE RATING: 30 VAC  
 CONTACT RESISTANCE: 10 mΩ MAX.

**FINISHES**  
 CONTACTS: 15μ" MIN. GOLD ON MATING END;  
 100μ" MIN. MATTE TIN ON SOLDER FOOT AREA  
 ALL UNDERPLATED NICKEL

**ENVIRONMENT**  
 OPERATION TEMPERATURE: -55°C TO +85°C  
 SMT TEMPERATURE: 260°C

 <b>ALL BEST</b> ALL BEST ELECTRONICS CO., LTD.	TITLE: QSFP-DD 76Pin SMT Connector		SHEET: 1/2		REV. A
	DWG#: R-CT-QD2-9CXX		CHECKED: Gary Kang		APPROVED: George Yang
	UNIT: mm	SCALE: A4 2:1	MATERIAL: RoHS Compliant		
	TOLERANCE: Angle: ±1° X.± 0.25 .X± 0.2 .XX± 0.15		THIRD ANGLE PROJECTION	DRAWN: Sheng	DATE: 12/25/2018



<b>TITLE:</b> QSFP-DD 76Pin SMT Connector			
<b>DWG#:</b> R-CT-QD2-9CXX		<b>SHEET:</b> 2/2	<b>REV.:</b> A
<b>UNIT:</b> mm	<b>SCALE:</b> A4 2:1	<b>FINISH:</b>	<b>CHECKED:</b> Gary Hang
<b>THIRD ANGLE PROJECTION</b>		<b>MATERIAL:</b> RoHS Compliant	<b>APPROVED:</b> George Hang
<b>TOLERANCE:</b> Angle: ± 1° X.± 0.15 .X± 0.10 .XX± 0.05		<b>DRAWN:</b> Sheng	<b>DATE:</b> 12/25/2018