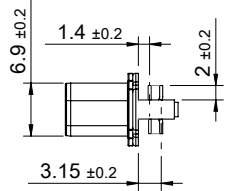
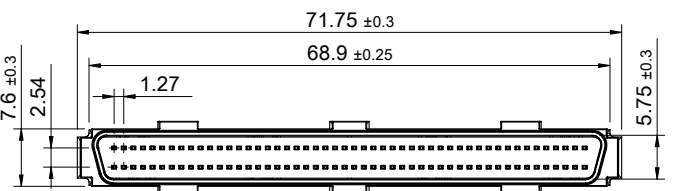
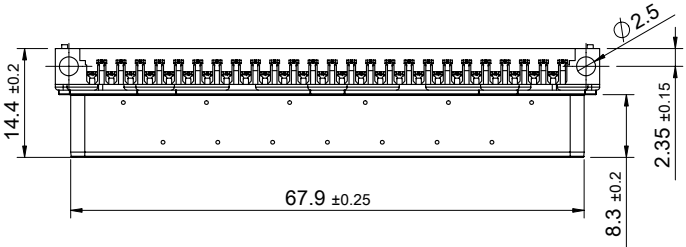
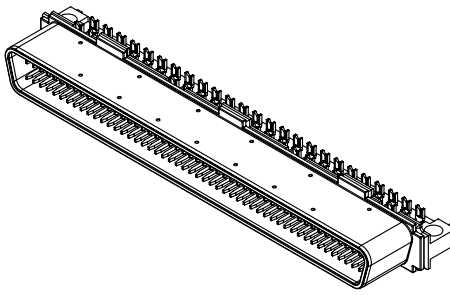


A B C D E F G H

1
2
3
4
5
6
7
8

1
2
3
4
5
6
7
8



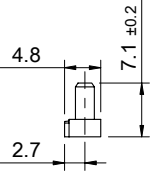
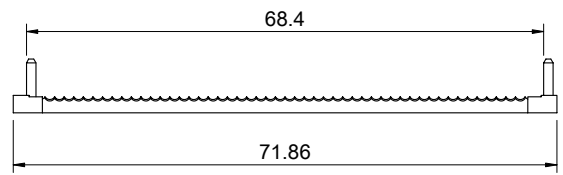
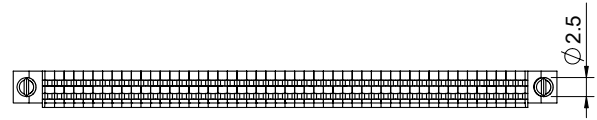
ELECTRICAL CHARACTERISTICS
 CONTACT CURRENT RATING:1AMPERE
 DIELECTRIC WITHSTANDING VOLTAGE:500VAC
 INSULATION RESISTANCE:1000 MEGOHMS MIN.
 CONTACT RESISTANCE:25 MILLIOHMS MAX.

MATERIALS
 CONTACTS:COPPER ALLOY
 INSULATOR:THERMOPLASTIC 94V-0
 SHELL:COLD ROLLER STEEL

FINISHES
 CONTACT: 5µ" MIN. GOLD ON MATING END;
 ALL UNDERPLATED NICKEL
 SHELL:NICKEL OVER COPPER

ENVIRONMENT
 OPERATION TEMPERATURE: -55°C TO + 85°C
 COMPATIBLE CABLE: AWG #30

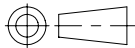
NOTES
 1.MATERIAL:THERMOPLASTIC
 2.THE STRAIN RELIEF WILL NOT SOLD SEPARATELY
 3.SHIP WITH TWO R-SR-013100-01



P/N:R-SR-013100-01

A B C D E F G H

 ALL BEST ALL BEST ELECTRONICS CO., LTD.	TITLE : 1.27mm Cable Plug		SHEET: 1 / 1	REV. C
	DWG# : R-ZI-013100-A		CHECKED: Gary Yang	
	UNIT : mm	SCALE : 1:1	FINISH :	APPROVED: George Yang
	TOLERANCE : Angle:±1° X.±0.25 .X±0.20 .XX±0.15		MATERIAL : RoHS Compliant	DRAWN: Marco



THIRD ANGLE PROJECTION