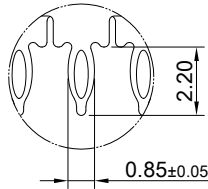
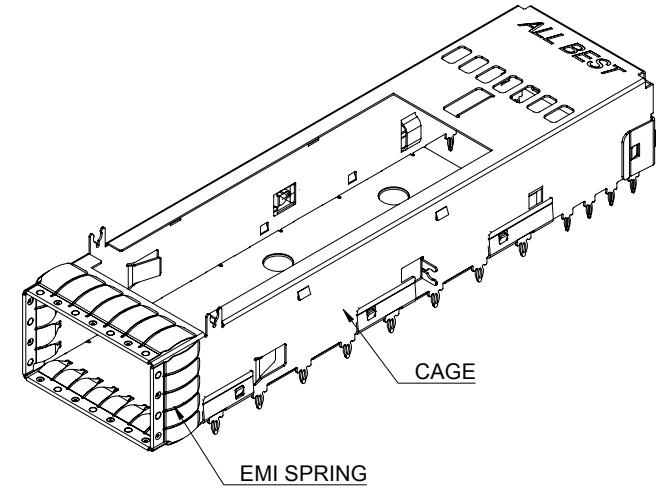
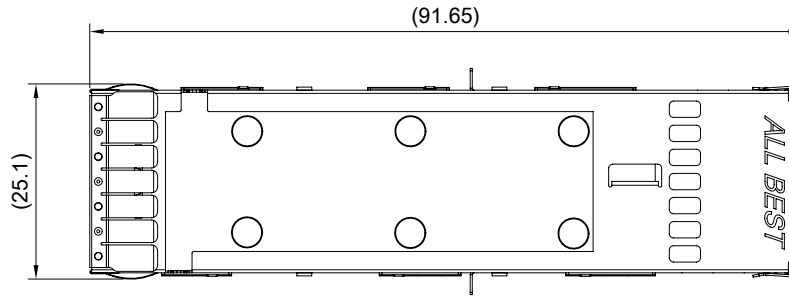


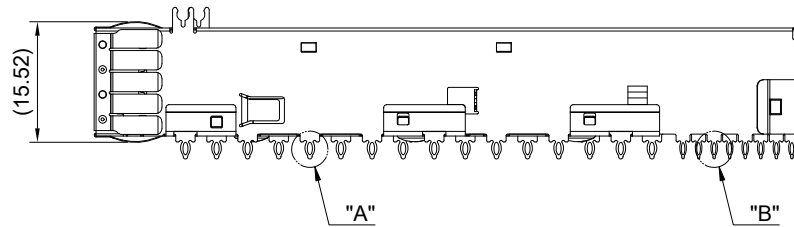
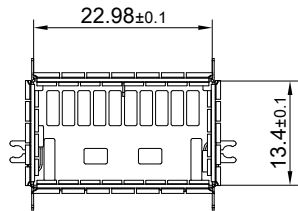
DETAIL A  
SCALE 4:1



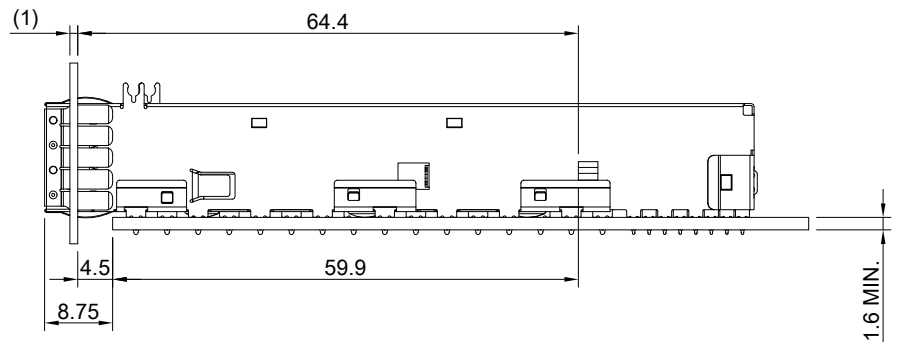
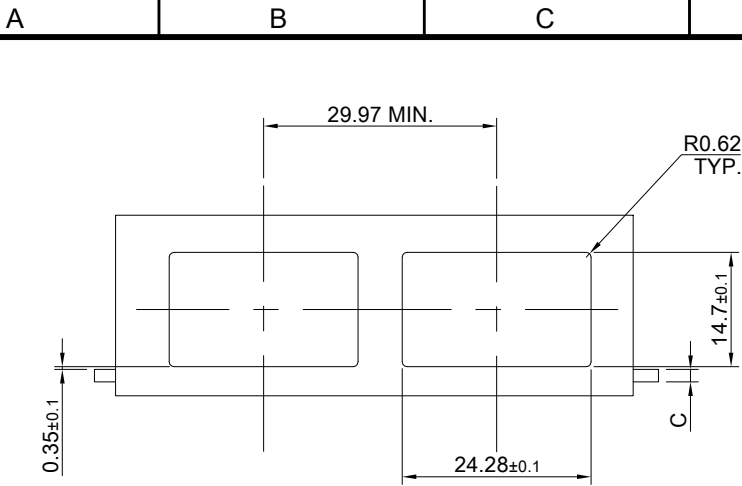
DETAIL B  
SCALE 4:1



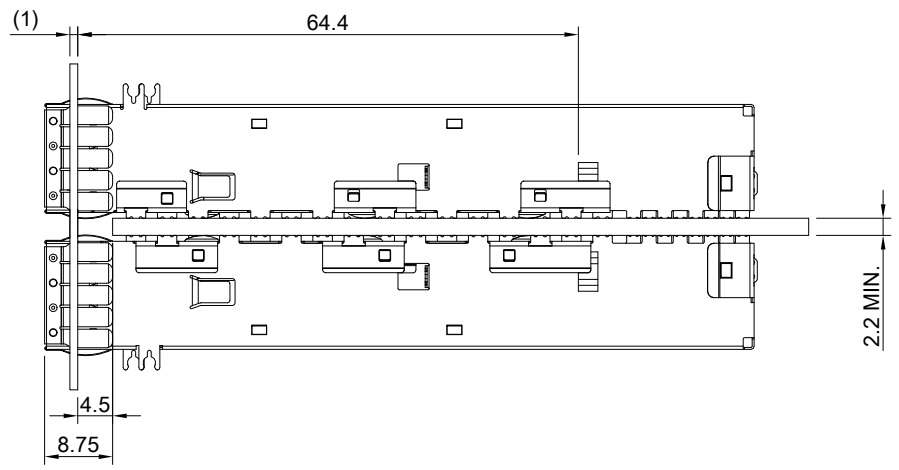
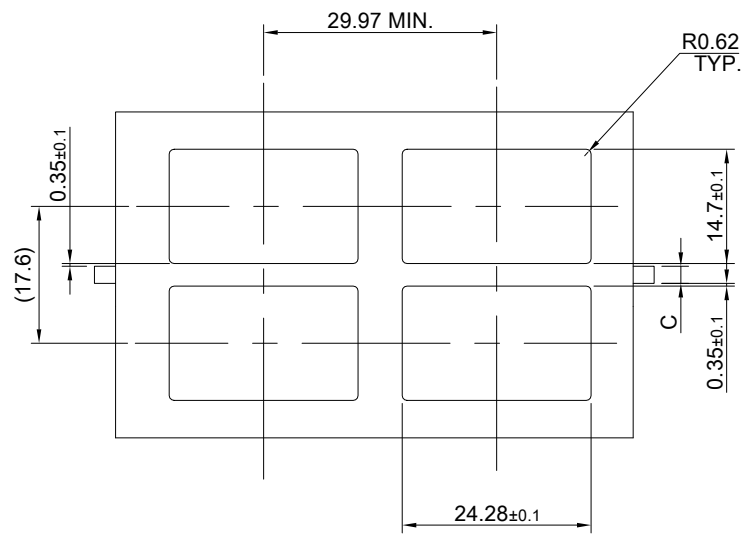
MATERIAL  
CAGE: NICKEL SILVER  
EMI SPRING: STAINLESS STEEL



	TITLE: OSFP 1X1 Cage Assembly			SHEET: 1/4		REV. B	
	DWG#: H-OR-OS1-4CMX4			CHECKED: Gary Kang		APPROVED: George Yang	
	UNIT: mm	SCALE: A4 1:1	FINISH:	MATERIAL: RoHS, HF Compliant		DATE: 11/15/2022	
	TOLERANCE: Angle: ± 1°		THIRD ANGLE PROJECTION	DRAWN: Kent			
	X.± 0.25 .X± 0.20 .XX± 0.15						



SINGLE-SIDE CONFIGURATION

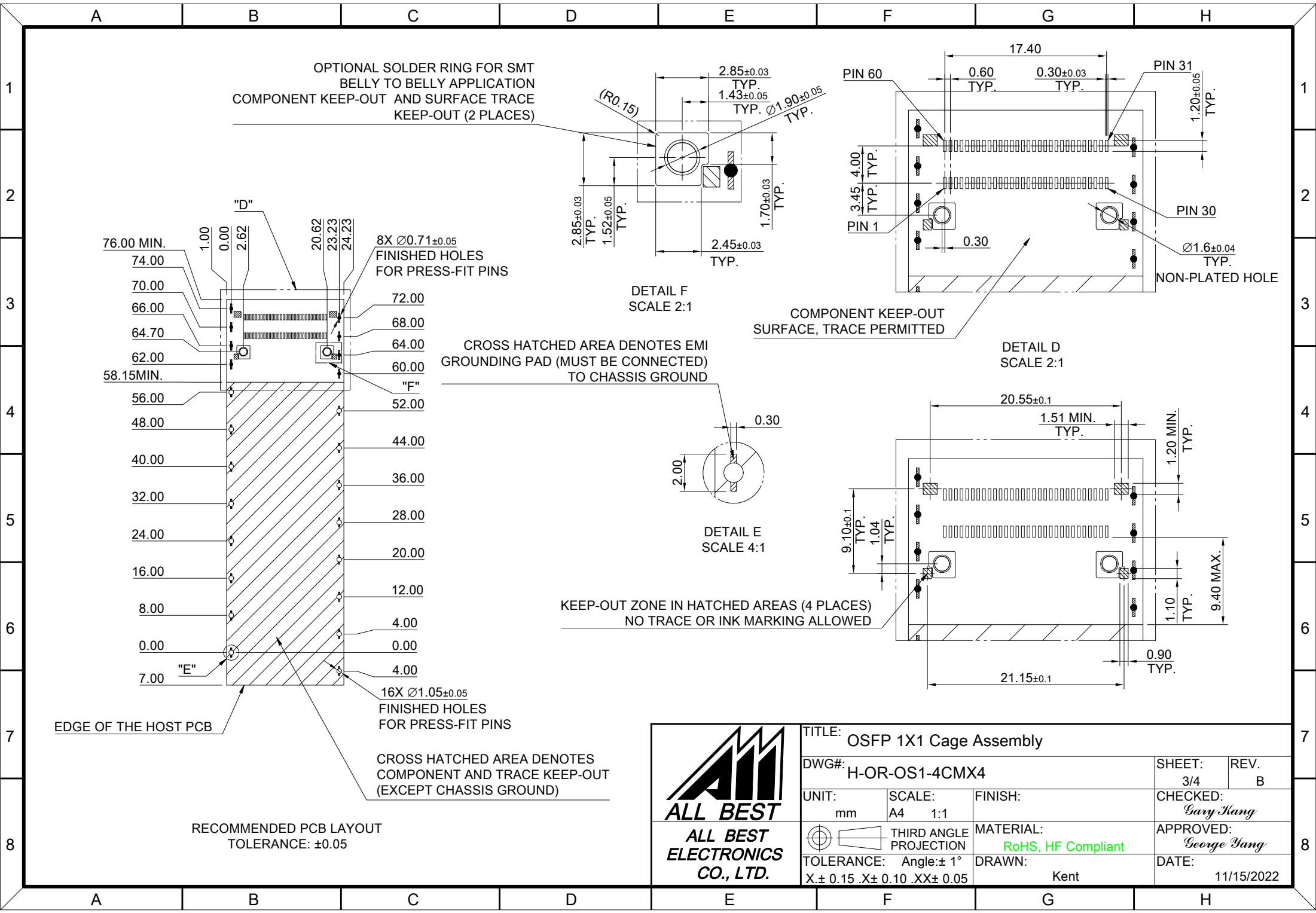


BELLY TO BELLY CONFIGURATION

C = THICKNESS OF PC BOARD  
 SINGLE-SIDE = 1.6 MM (MIN.)  
 BELLY TO BELLY = 2.2MM (MIN.)



TITLE: OSFP 1X1 Cage Assembly		SHEET: 2/4	REV. B
DWG#: H-OR-OS1-4CMX4		CHECKED: Gary Kang	
UNIT: mm	SCALE: A4 1:1	APPROVED: George Yang	
THIRD ANGLE PROJECTION		MATERIAL: RoHS, HF Compliant	
TOLERANCE: Angle: ± 1° X ± 0.15 .X ± 0.10 .XX ± 0.05		DRAWN: Kent	DATE: 11/15/2022



EDGE OF THE HOST PCB

RECOMMENDED PCB LAYOUT  
TOLERANCE: ±0.05

16X Ø1.05±0.05  
FINISHED HOLES  
FOR PRESS-FIT PINS

CROSS HATCHED AREA DENOTES  
COMPONENT AND TRACE KEEP-OUT  
(EXCEPT CHASSIS GROUND)

CROSS HATCHED AREA DENOTES EMI  
GROUNDING PAD (MUST BE CONNECTED)  
TO CHASSIS GROUND

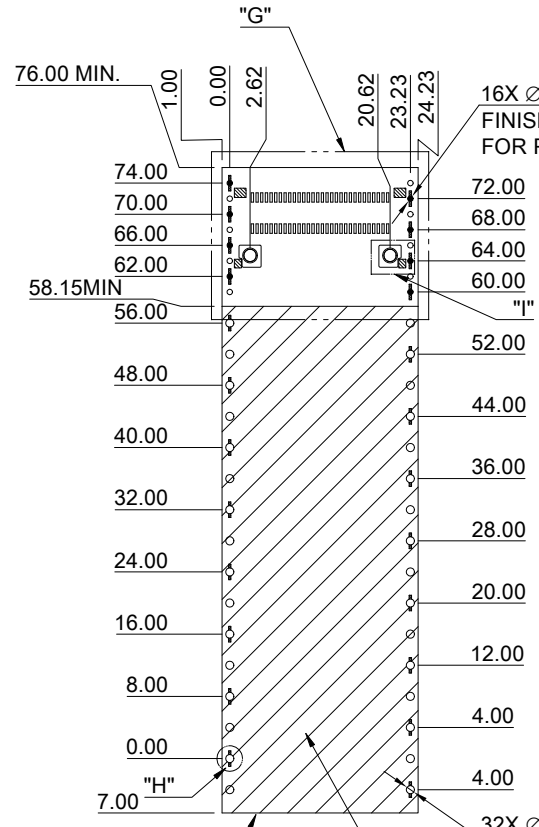
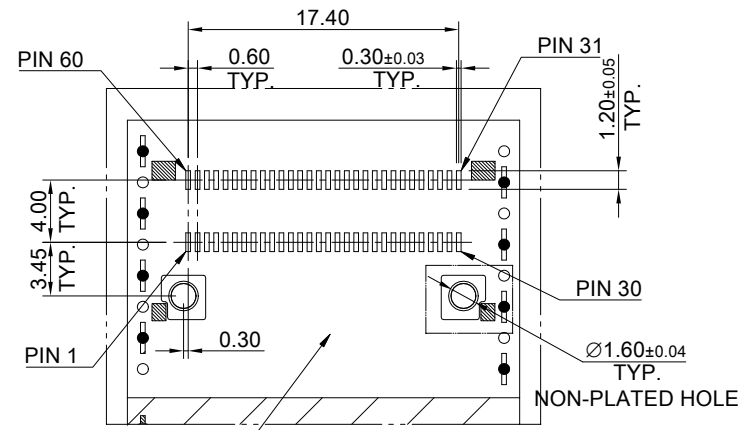
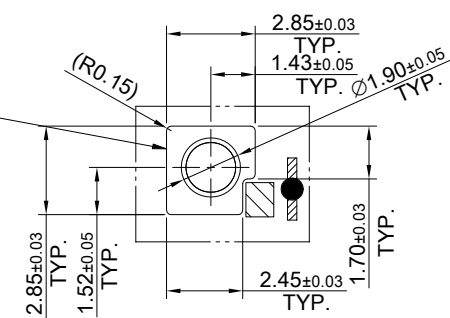
KEEP-OUT ZONE IN HATCHED AREAS (4 PLACES)  
NO TRACE OR INK MARKING ALLOWED

COMPONENT KEEP-OUT  
SURFACE, TRACE PERMITTED

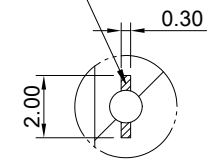


TITLE: OSFP 1X1 Cage Assembly			
DWG#: H-OR-OS1-4CMX4		SHEET: 3/4	REV. B
UNIT: mm	SCALE: A4 1:1	CHECKED: Gary Kang	
TOLERANCE: X± 0.15 .X± 0.10 .XX± 0.05		MATERIAL: RoHS, HF Compliant	APPROVED: George Yang
THIRD ANGLE PROJECTION		DRAWN: Kent	DATE: 11/15/2022

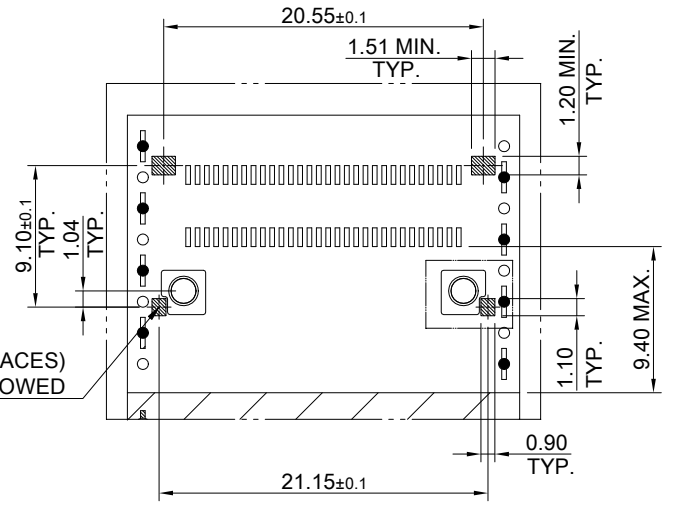
OPTIONAL SOLDER RING FOR SMT BELLY TO BELLY APPLICATION  
COMPONENT KEEP-OUT AND SURFACE TRACE KEEP-OUT (2 PLACES)



CROSS HATCHED AREA DENOTES EMI GROUNDING PAD (MUST BE CONNECTED TO CHASSIS GROUND)



KEEP-OUT ZONE IN HATCHED AREAS (4 PLACES)  
NO TRACE OR INK MARKING ALLOWED



EDGE OF THE HOST PCB

32X Ø1.05±0.05 FINISHED HOLES FOR PRESS-FIT PINS

CROSS HATCHED AREA DENOTES COMPONENT AND TRACE KEEP-OUT (EXCEPT CHASSIS GROUND)

RECOMMENDED PCB LAYOUT  
TOLERANCE: ±0.05



TITLE: OSFP 1X1 Cage Assembly			
DWG#: H-OR-OS1-4CMX4		SHEET: 4/4	REV. B
UNIT: mm	SCALE: A4 1:1	CHECKED: Gary Kang	
THIRD ANGLE PROJECTION		MATERIAL: RoHS, HF Compliant	APPROVED: George Yang
TOLERANCE: Angle: ± 1° X.± 0.15 .X± 0.10 .XX± 0.05		DRAWN: Kent	DATE: 11/15/2022